



CXS

Cross-Connect Solutions

IC110 HINGED WIRING BLOCK

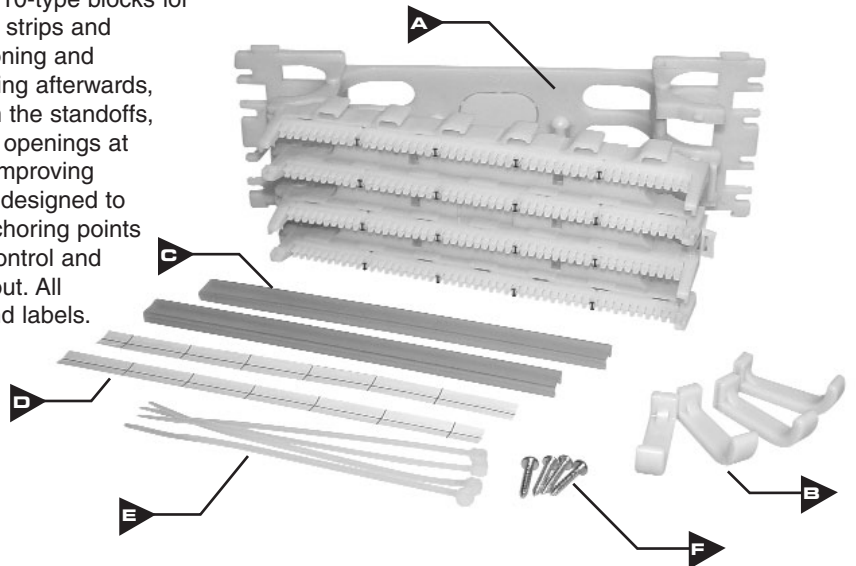
INSTALLATION INSTRUCTIONS

IC110 Hinged Wiring Block

ICC's hinged IC110 system facilitates the installation of 110-type blocks for 25-pair or UTP cabling, and uses the standard 110 index strips and connecting blocks. ICC's hinged design allows the positioning and installation of the IC110 wiring blocks first and cable routing afterwards, by allowing total access to the cabling pathways between the standoffs, even after the wiring block is mounted. The cable access openings at both ends of the wiring block have been extended, thus improving cable routing capabilities. The base of the wiring block is designed to provide stability during punch down and incorporates anchoring points for either cable ties or VELCRO® ties to improve cable control and routing. It is also equipped with a rear cable entry knockout. All wiring blocks come equipped with IC110 label holders and labels.

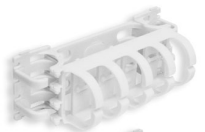
IC110WH100 INCLUDES:

- A** IC110 Hinged Wiring Block , 1 piece
- B** Cable Organizers, 4 pieces/bag
- C** Label Holders, Clear, 2 pieces
- D** Designation Labels, White, 2 pieces
- E** Cable Ties, 4 pieces
- F** #4 x 3/4 Truss Head Tapping Screws, 4 pieces/bag



AVAILABLE ACCESSORIES

To support the use of IC110 Wiring Blocks, ICC has developed additional accessories including connecting blocks, termination caps and colored wiring label sheets and holders to help simplify the overall installation and terminal identification process.



IC110 Hinged Cable Management Block

ITEM NUMBER	DESCRIPTION
IC110WHCMS	Hinged Cable Management Block

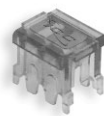
OPEN FOR EASY ACCESS



IC110 Connecting Blocks

ITEM NUMBER	DESCRIPTION
IC110CB3PR	3-Pair IC110 Connecting Block, 10 pcs./bag
IC110CB4PR	4-Pair IC110 Connecting Block, 10 pcs./bag
IC110CB5PR	5-Pair IC110 Connecting Block, 10 pcs./bag

BOTTOM VIEW



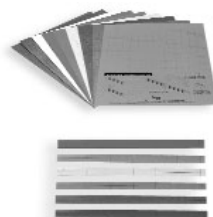
TOP VIEW



BOTTOM VIEW

IC110 Termination Caps

ITEM NUMBER	DESCRIPTION
IC110TC350	3 Cond. Cap, 50 pcs./bag
IC110TC450	4 Cond. Cap, 50 pcs./bag



IC110 Color Wiring Label Sheet and Holders

ITEM NUMBER	DESCRIPTION
ICMPP35RMB	IC110 Color Wiring Label Sheet, 1 sheet/bag
ICMPP35RMB	IC110 Label Holders, 6 pcs./bag

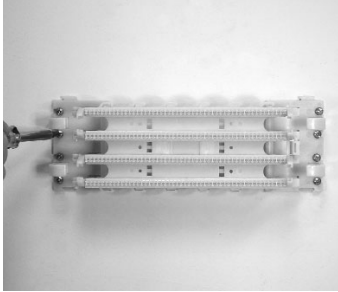
xx* = WH, GY, BL, GN, OR, PR, RD, YL, BR

CUSTOMER CARE / TECHNICAL SUPPORT • CSR@ICC.COM / 888-275-4422 (ASK-4-ICC)

• Website WWW.ICC.COM •

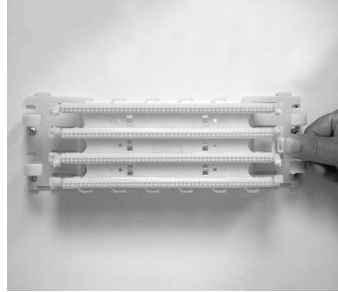
ASSEMBLY INSTRUCTIONS

Step 1.



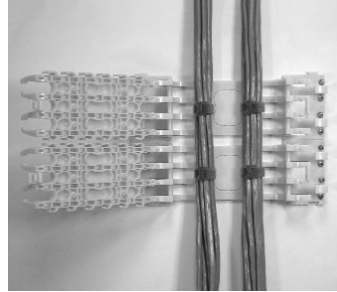
1. Mount the IC110 hinged wiring block onto an appropriate surface with the included mounting screws or any other necessary hardware.

Step 2.



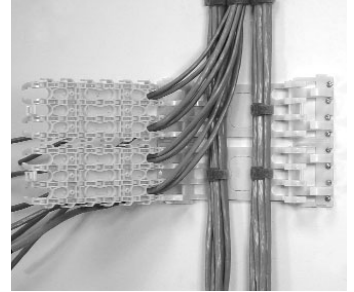
2. Compress the latch and open the wiring block exposing the cable pathway within the standoffs on the base.

Step 3.



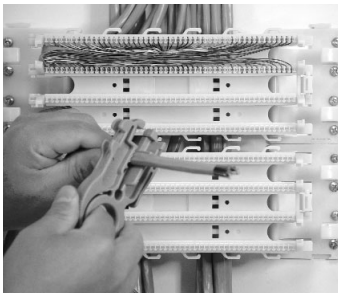
3. Route the cable within the base using cable/ VELCRO® ties with the tie down anchors to secure the cable.

Step 4.



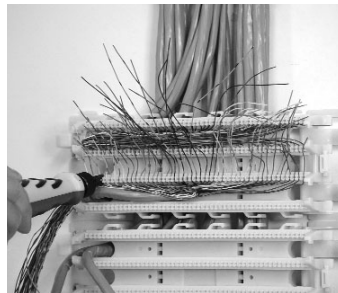
4. Feed the cables through the proper openings in the wiring block. Use cable ties with the tie down anchors on the wiring block to secure the cable. Close and latch the wiring block back into a secured position.

Step 5.



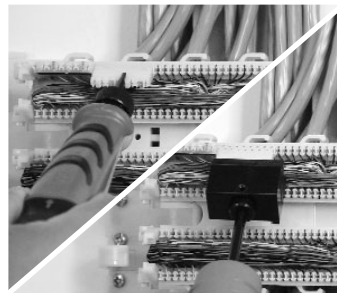
5. Strip back the cable sheath as much as necessary to expose the conductors for termination.

Step 6.



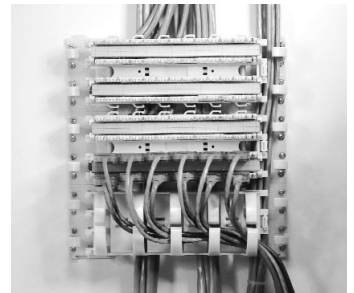
6. Position the conductors in the appropriate channel and trim the excess wire with a punch down tool.

Step 7.



7. Align an IC110 Connecting Block in the proper channels of the wiring block with the blue mark towards the left and gray strip down. Use ICC's 5-pair or single punch down tool in the "HI Impact" setting to seat the connecting block.

Step 8.



8. Label the cabling drop using the label identification holder and labels included, then insert the holder onto the wiring block. Use jumper wire or IC110 Patch Cords to complete the cross-connection.