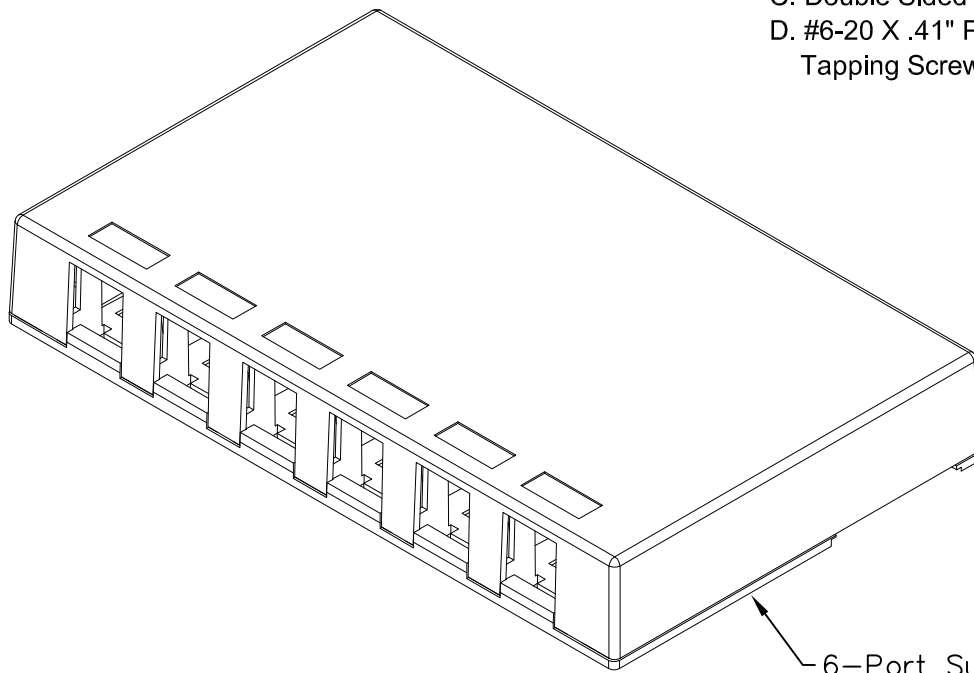


6-Port Surface Mount Box

PRODUCT SPECIFICATION

Package includes:

- A. Surface Mount Box Cover, 1 pc
- B. Surface Mount Box Base, 1 pc
- C. Double Sided Adhesive Strip, 2 pcs
- D. #6-20 X .41" Pan Head, Sharp Point Tapping Screw, 2 pcs



6-Port Surface Mount Box

Features and Benefits:

- Provides a clean modular surface mount outlet solution for voice, data, and other communication needs to the work area for commercial or residential applications.
- Multiple mounting options including adhesive backing and screws.
- Recessed areas for ID labels.
- Rugged and durable construction.
- Accommodates a wide variety of easy to snap-in modules, providing configuration flexibility.
- Compatible with ICRWR12XXX raceway sections.
- Accepts all IC107 modules.
- Not compatible with USB and HDMI coupler modules due to the size of the USB and HDMI cable connector end
- Available in black, ivory and white.
- ANSI/TIA-568-C and UL 1863 compliant

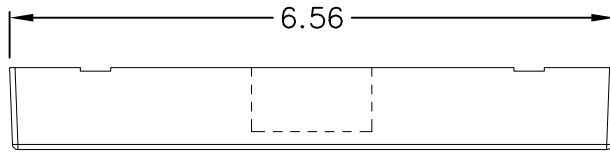
SURFACE MOUNT BOX, 6-PORT

ITEM NO.	IC107SB6XX
DWG NO.	PS107SB600

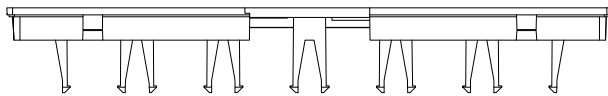
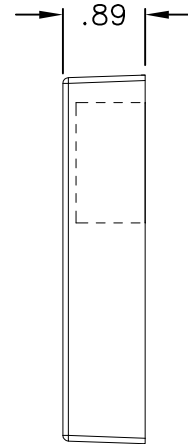
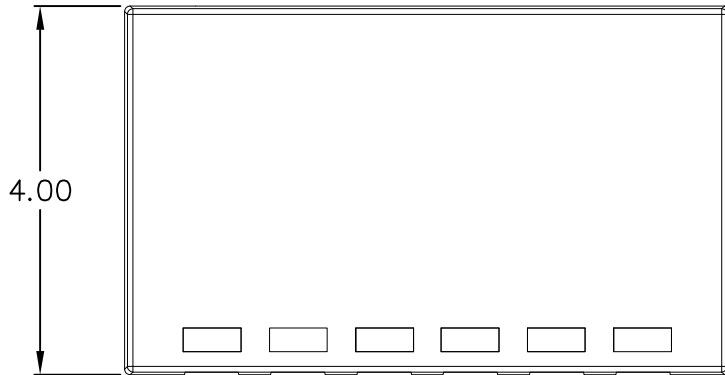
REV.	B
PAGE NO.	1



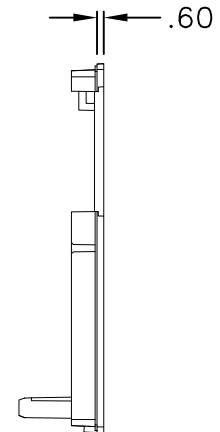
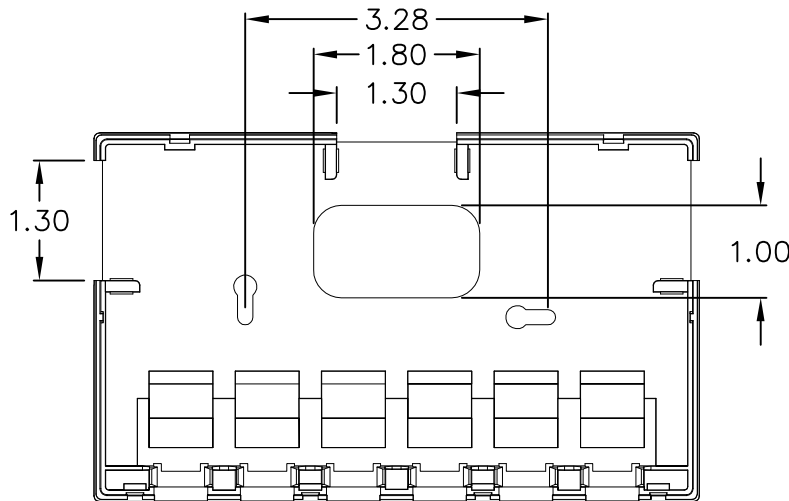
CUSTOMER CARE / TECHNICAL SUPPORT * CSR@ICC.COM / 888-ASK-4-ICC (275-4422) * 2100 E. Valencia Dr, Suite D, Fullerton, CA 92831 * www.icc.com



COVER

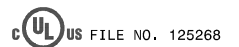



BASE



NOTE: UNLESS OTHERWISE SPECIFIED

- 1. MATERIAL: ABS, UL 94V-0
- 2. COLOR: XX: BL-BLACK, IV-IVORY & WH-WHITE



SURFACE MOUNT BOX, 6-PORT		 <i>PremiumProducts</i> <i>ProvenPerformance</i> <i>CompetitivePrices</i>	
ITEM NO.	IC107SB6XX		REV. B
DWG NO.	PS107SB600	PAGE NO.	2

CUSTOMER CARE / TECHNICAL SUPPORT * CSR@ICC.COM / 888-ASK-4-ICC (275-4422) * 2100 E. Valencia Dr, Suite D, Fullerton, CA 92831 * www.icc.com