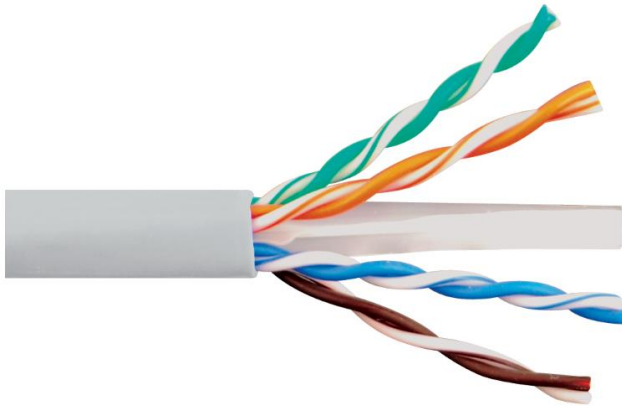


Category 6e 600MHz Riser UTP Solid Cable

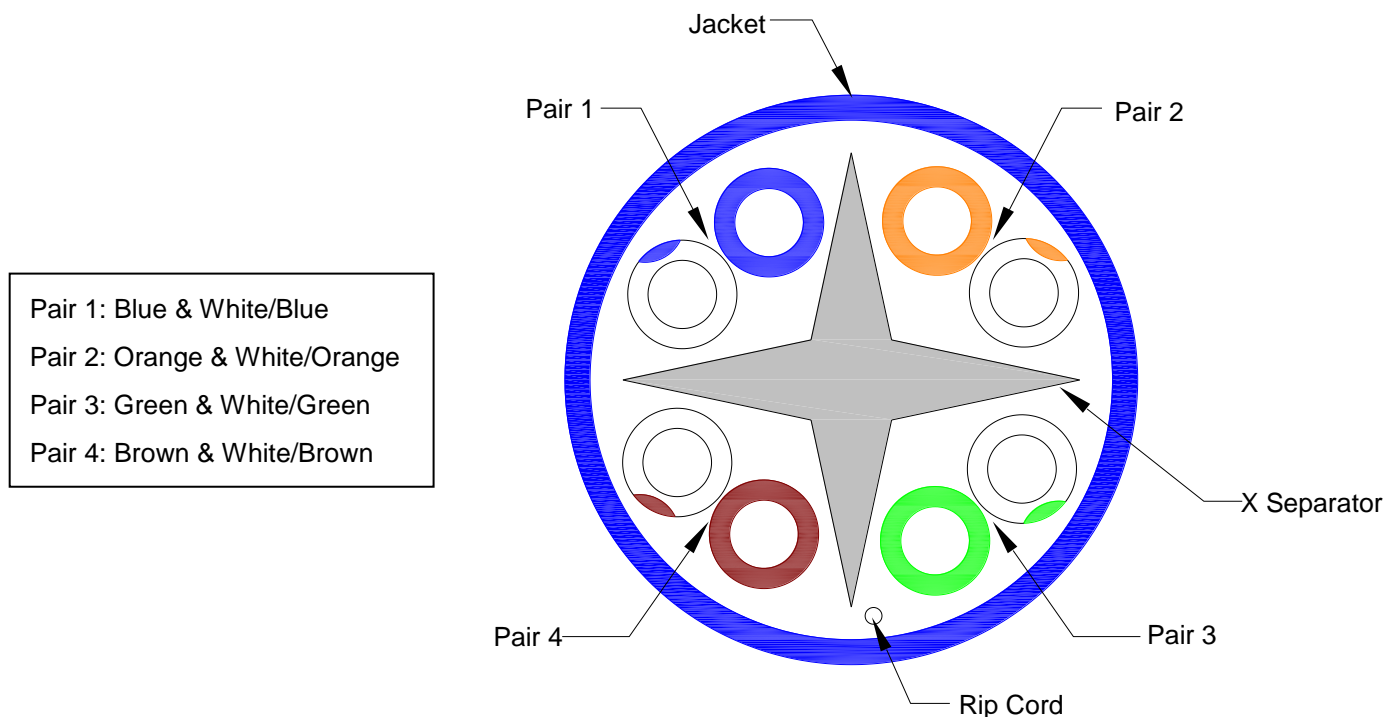


Package Include:

A. Category 6e UTP CMR Solid Cable, **1000 Feet**

Features and Benefits

- Exceeds TIA 568-C.2 Category 6 standard
- Easy to dispense 1000 feet with EZ Pull box, saving you energy and time on the job site
- Convenient sequential footage markings for usage tracking
- Riser flame retardant rated required in most commercial installations
- ETL verified TIA/EIA 568-C.2 for guaranteed performance
- UL 1863 compliant
- Available in blue, gray, green, white, and yellow



| | | | | | | | | | | | | |
|-----------------------|------|------|------|------|------|-------|------|-------|-------|-------|-------|-------|
| Frequency(MHz) | 1.0 | 4.0 | 10.0 | 16.0 | 20.0 | 31.25 | 62.5 | 100.0 | 200.0 | 250.0 | 450.0 | 600.0 |
| Attenuation (dB/100m) | 2.0 | 3.8 | 6.0 | 7.6 | 8.5 | 10.7 | 15.4 | 19.8 | 29.0 | 32.8 | 46.0 | 54.5 |
| NEXT (dB) | 79.3 | 70.3 | 64.3 | 61.2 | 59.8 | 56.9 | 52.4 | 49.3 | 44.8 | 43.3 | 39.5 | 37.6 |
| PS NEXT Loss(dB) | 72.3 | 63.3 | 57.3 | 54.2 | 52.8 | 49.9 | 45.4 | 42.3 | 37.8 | 36.3 | 32.5 | 30.6 |
| ACRF (dB) | 67.8 | 55.8 | 47.8 | 43.7 | 41.8 | 37.9 | 31.9 | 27.8 | 21.8 | 19.8 | 14.7 | 12.2 |
| PS ACRF (dB) | 64.8 | 52.8 | 44.8 | 40.7 | 38.8 | 34.9 | 28.9 | 24.8 | 18.8 | 16.8 | 11.7 | 9.2 |
| Return Loss (dB) | 20.0 | 23.0 | 25.0 | 25.0 | 25.0 | 23.6 | 21.5 | 20.1 | 18.0 | 17.3 | 15.5 | 14.7 |
| ACR (dB) | 80.3 | 69.5 | 61.4 | 56.8 | 54.5 | 49.4 | 40.0 | 33.2 | 20.1 | 15.1 | 5.0 | N/A |
| PS ACR (dB) | 78.3 | 67.5 | 59.4 | 54.8 | 52.5 | 47.4 | 38.4 | 31.2 | 18.1 | 13.1 | 3.0 | N/A |

NOTE: UNLESS OTHERWISE SPECIFIED

1. Standard:

A. UL444, ISO/IEC 11801, TIA-568-C.2 CAT 6; 2002/95/EC (RoHS), ICEA S-116-732

2. Construction:

- A. Size: 23 AWG
- B. Conductor: Solid Bare Copper
- C. Insulation: PE
- D. Jacket: PVC -- Ø0.23" ±.008 (5.8MM±0.2)
- E. Rip Cord: Polyester
- F. X Separator: PE

3. Electrical/Physical Properties:

- A. Rating Temp Voltage: 75°C, 300V
- B. Conductor Resistance: 80 OHM/100m/20°C Max
- C. Mutual Capacitance: 56 pF/M Max
- D. Dielectric Strength: AC 500V/1 Min
- E. Spark Test: 2.5 KV
- F. Flame Retardant Test: CMR
- G. DC Resistances Unbalance: 5% Max
- H. AC Leakage Current through Overall Jacket: AC 1500V ≤ 10mA
- I. Pair-To-Pair Capacitance Unbalanced: 330 pF/100m MAX
- J. Characteristic Impedance: 1~600 MHz 100±15 OHMS
- K. Propagation Delay: 600MHz 536nS/100m Max
- L. Velocity of Propagation (NVP): 68% Nominal
- M. Delay Skew: 1~600MHz 40nS/100m Max
- N. Installation Temperature: 32° ~ 140°F
- O. Operational Temperature: -4°~167°F

4. Packaging:

- A. Bulk Package: 1000 Feet/Pull Box
- B. Box Size: 16.30" x 10.00" x 16.00"
- C. Weight: 28.65 lbs.

