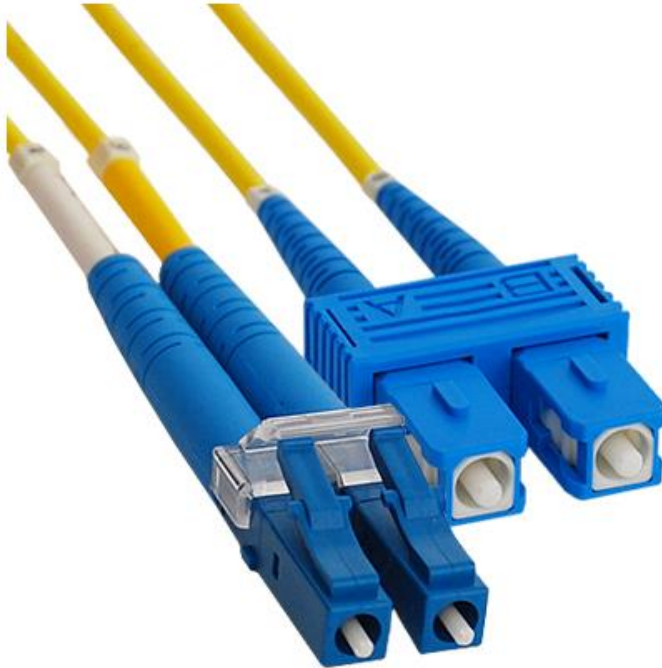


# LC-SC 9/125 $\mu$ m OS1 Singlemode Duplex Fiber Optic Jumper

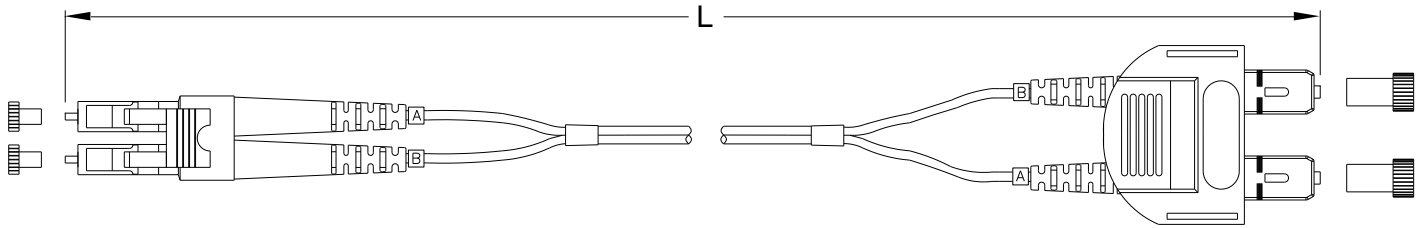


## Package Includes

- A. LC-SC 9/125 $\mu$ m OS1 SM Duplex Fiber Jumper, 1 pc.
- B. Test Results Label, 1 pc.

## Features and Benefits

- Made from OFNR riser rated cables, exceeding industry requirements
- Used with ICC fiber optic products
- Available in 1, 2, 3, 5, 7, and 10 meters
- Dust Cap included
- Test results included



**NOTE: UNLESS OTHERWISE SPECIFIED**

1. Cable:

- A. Color: Yellow
- B. Fiber Counts: 2 Fiber Zipcord
- C. Fiber Type: Singlemode 9/125 $\mu$ m
- D. Attenuation: 0.35/0.20 dB/km @ 1310/1550 nm
- E. Cable Data:
  - Cable diameter: .079 in (2.0mm)
  - Weight: 12 lbs./kft
  - Bend radius: 1.2" MIN
  - Loading: 135 lbs. MAX

| ITEM NUMBER | L (LENGTH)           |
|-------------|----------------------|
| ICFOJ2M501  | 1 METER $\pm$ 10 CM  |
| ICFOJ2M502  | 2 METER $\pm$ 10 CM  |
| ICFOJ2M503  | 3 METER $\pm$ 10 CM  |
| ICFOJ2M505  | 5 METER $\pm$ 10 CM  |
| ICFOJ2M507  | 7 METER $\pm$ 10 CM  |
| ICFOJ2M510  | 10 METER $\pm$ 10 CM |

2. SC Connector:

- A. Ferrule: Zirconia
- B. Insertion Loss: 0.2 dB Typical, 0.3 dB MAX
- C. Return Loss: 55 dB
- D. UPC Polish

3. LC Connector:

- A. Ferrule: Zirconia
- B. Insertion Loss: 0.2 dB Typical, 0.3 dB MAX
- C. Return Loss: 55 dB
- D. UPC Polish

4. Compliance:

- A. ANSI/TIA-568-C.3

5. Length: XX: 01, 02, 03, 05, 07, & 10