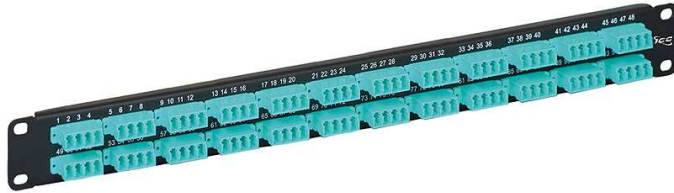


Fiber Patch Panel, 24-LC Quad, 96F, Aqua, 10G

Package Includes

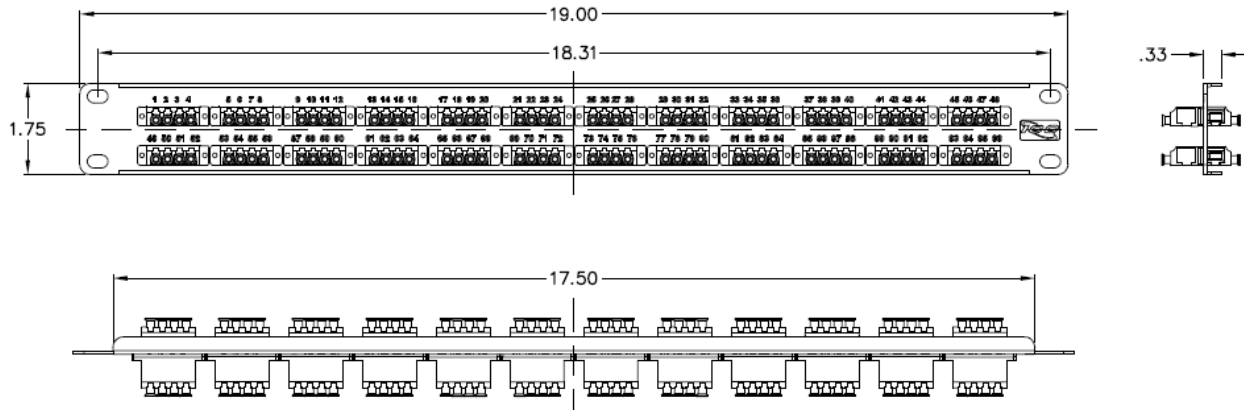
- A. 24-LC Quad Fiber Patch Panel, 1
- B. #12-24 x 5/8" Pan Head, Pilot Point Machine Screws, 4 pcs.



Features and Benefits

- Fiber patch panel loaded with 24 LC-to-LC quad adapters
- Suitable for backbone-to-backbone and backbone-to-horizontal fiber cabling
- Allows up to 96 multimode fiber (MMF) connections
- Fits standard 19" EIA rack or wall mount widths
- 1 rack mount space (RMS)
- Package includes dust caps and #12-24 rack screws

Specifications



NOTE: UNLESS OTHERWISE SPECIFIED

1. MATERIAL:

- A. PATCH PANEL
 - PANEL: 16GA CRS
 - FINISHING: TEXTURED BLACK POWDER COAT
- B. LC QUAD ADAPTER:
 - PLASTIC BODY
 - COLOR: AQUA (10G)
 - DUST CAP:
 - SLEEVE: METAL (MM)
 - MOUNTING PLATE : STAINLESS STEEL

For warranty information, go online to icc.com/warranty.

Part No: ICFCP96ML1G Rev: A

Part No: ICFCP96ML1G

Rev: A

Page 2 of 2

| 888-ASK-4ICC | icc.com | csr@icc.com |

