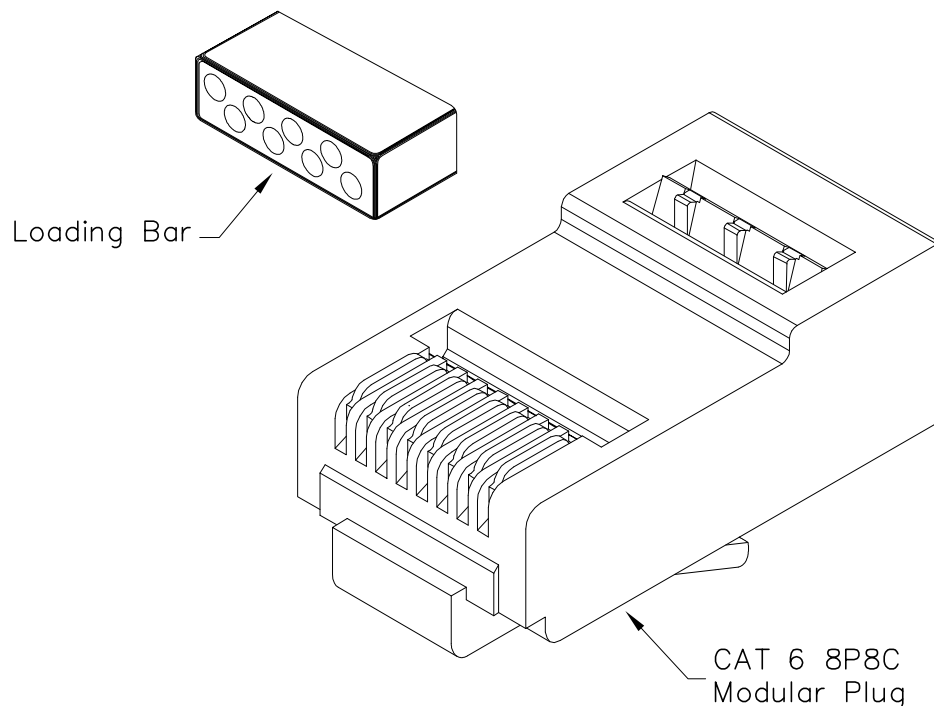


CAT 6 Solid/Stranded 8P8C RJ-45 Modular Plug

PRODUCT SPECIFICATION

Package includes:

- A. CAT 6 8P8C Modular Plug, 100 pcs
- B. Loading Bar, 100 pcs



Features and Benefits:

- Designed for CAT 6, 8-position 8-conductor, solid or stranded wire
- Ideal for customization of cords for voice or high speed data applications
- Accepts 24~23 AWG solid or stranded
- Used with ICACSCT864 and ICACSCT845 crimping tools

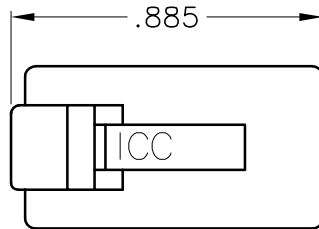
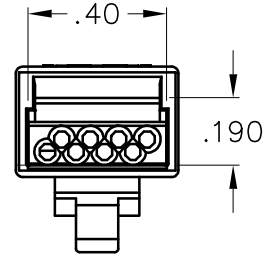
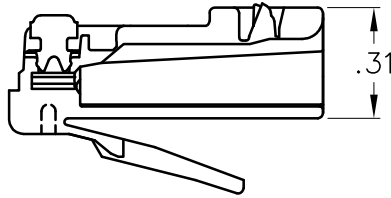
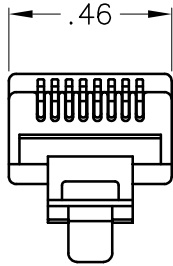
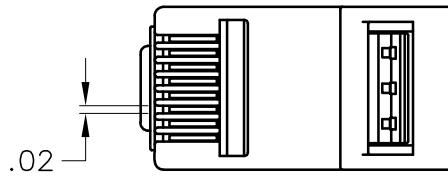
PLUG, CAT 6, SOLID/STRANDED, 100PK

ITEM NO.	ICMP8P8C6E
DWG NO.	PSMP8P8C6E

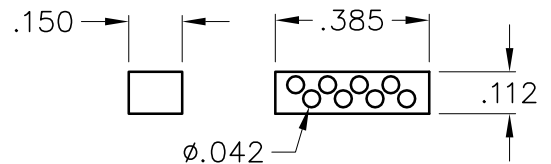
REV.	A
PAGE NO.	1



CUSTOMER CARE / TECHNICAL SUPPORT * CSR@ICC.COM / 888-ASK-4-ICC (275-4422) * 14700 Alondra Blvd., La Mirada, CA 90638 * www.icc.com




LOADING BAR



NOTE: UNLESS OTHERWISE SPECIFIED

1. ELECTRICAL:
 - A. CURRENT/VOLTAGE RATING: 1.5 AMPS / 30 VAC 42 VDC
 - B. CONTACT RESISTANCE: 10 MILLIOHMS MAX.
2. PERFORMANCE:
 - A. MEETS OR EXCEEDS CATEGORY 6 EIA/TIA 568 A-B.2
 - B. INSERTION/EXTRACTION LIFE: 1000 CYCLES
 - C. ROHS COMPLIANT
3. OPERATION TEMPERATURE: -40°C ~ +85°C
4. MATERIAL & FINISH:
 - A. HOUSING: POLYCARBONATE, UL 94V-0
 - B. CONTACT: PHOSPHOR BRONZE, .012 THICK
 - C. GOLD PLATING: STANDARD PLATING IS 1.27 MICRON/50 MICRO INCH GOLD OVER 100 MICRO INCH NICKEL
 - D. LOADING BAR:
 - COLOR: BLACK
 - MAXIMUM STRANDED/SOLID CONDUCTOR DIAMETER: 0.042"

PLUG, CAT 6, SOLID/STRANDED, 100PK		 PremiumProducts ProvenPerformance CompetitivePrices	
ITEM NO.	ICMP8P8C6E		REV. A
DWG NO.	PSMP8P8C6E	PAGE NO.	2

CUSTOMER CARE / TECHNICAL SUPPORT * CSR@ICC.COM / 888-ASK-4-ICC (275-4422) * 14700 Alondra Blvd., La Mirada, CA 90638 * www.icc.com