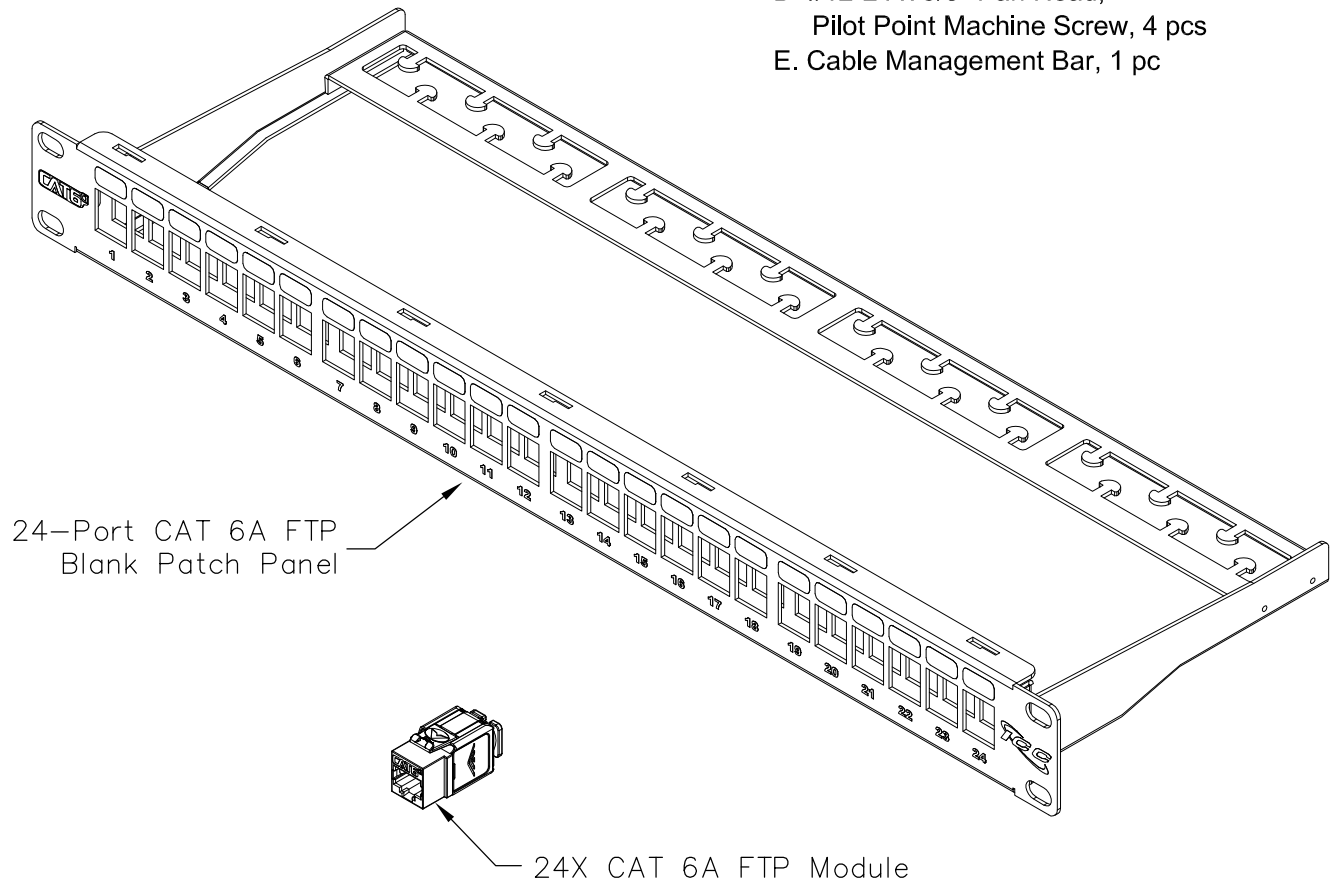


24-Port CAT 6A FTP Blank Patch Panel w/24 Unloaded CAT 6A Inserts

PRODUCT SPECIFICATION

Package includes:

- A. 24-Port CAT 6A FTP Blank Patch Panel, 1 pc
- B. CAT 6A, FTP, Modular Insert, 24 pcs
- C. Cable Tie, 24 pcs
- D. #12-24 x 5/8" Pan Head,
Pilot Point Machine Screw, 4 pcs
- E. Cable Management Bar, 1 pc



24-Port CAT 6A FTP
Blank Patch Panel

24X CAT 6A FTP Module

Features and Benefits:

- Accommodates ICC CAT6A FTP Modular Connector
- Designed to minimize the alien crosstalk for 10G applications
- Includes rear cable management to facilitate proper bend radius of cable
- Compatible with standard 19" distribution racks
- Pre-installed grounding studs for quick installation

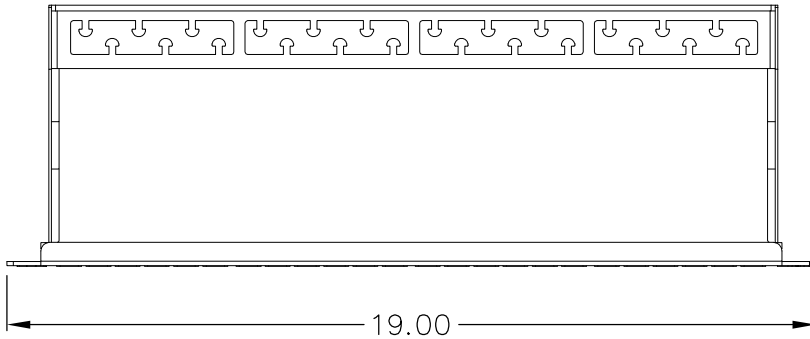
PATCH PANEL, CAT 6A, SHIELDED, 24-P, 1RMS

ITEM NO.	ICMPP246AS
DWG NO.	PSMPP246AS

REV.	A
PAGE NO.	1



CUSTOMER CARE / TECHNICAL SUPPORT * CSR@ICC.COM / 888-ASK-4-ICC (275-4422) * 14700 Alondra Blvd, La Mirada, CA 90638 * Phone 562-356-3111 * Fax 562-356-3100 * www.icc.com

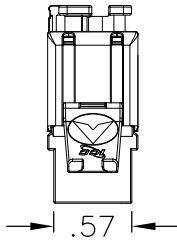
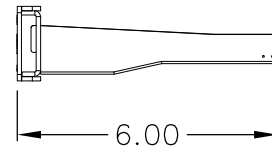
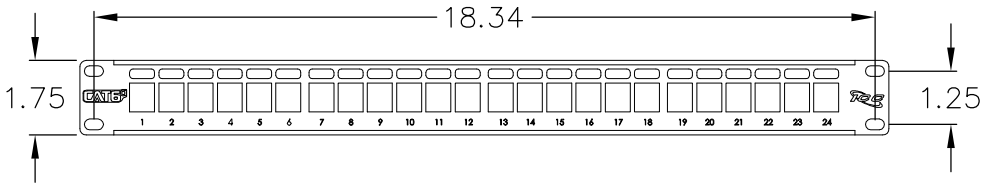


NOTE: UNLESS OTHERWISE SPECIFIED

1. 24-PORT PATCH PANEL:

A. MATERIAL: 16GA CRS

B. SURFACE FINISH: FRONT - BLACK POWDER COAT
BACK - ZINC PLATED



NOTE: UNLESS OTHERWISE SPECIFIED

1. CAT6A FTP MODULAR CONNECTOR:

A. ENVIRONMENTAL CONDITIONS:

-TEMPERATURE RANGE

-STORAGE: -40 TO +70°C, OPERATIONAL: -10 TO +60°C

-RELATIVE HUMIDITY (OPERATIONAL):

MAXIMUM NONCONDENSING 93%

B. ELECTRICAL:

-INSULATION RESISTANCE: 500 MEGAOHM MIN

-CONTACT RESISTANCE: 20 MILLIOHM MAX

-DIELECTRIC WITHSTANDING VOLTAGE: 1,000 VOLTS D.C.,
60 HZ, 1 MIN

C. MECHANICAL:

-TOTAL CONTACT FORCE: 800 GRAM FOR
8 WIRE LEADS MINIMUM

-RETENTION: 50N (11 LBF) FOR 60S±5S

-INSERTION LIFE: 750 CYCLES MIN

D. PHYSICAL:

-HOUSING: ZINC-ALLOY FULLY SHIELDED

-SPRING WIRE: PHOSPHOR BRONZE ALLOY

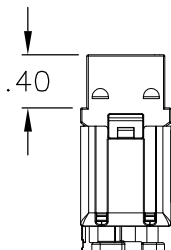
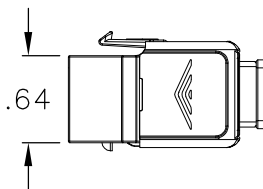
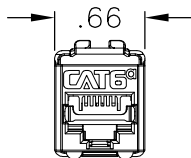
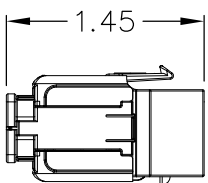
PLATED WITH 50 MICRO-INCH OF GOLD OVER
70~100 MICRO-INCH OF NICKEL

2. WIRE TERMINATION CAP: ABS

3. IDC WIRE GAUGE: 22~24 AWG

4. CERTIFICATION:

A. MEETS ANSI/TIA-568-C.2 (500 MHz)



PATCH PANEL, CAT 6A, SHIELDED, 24-P, 1 RMS

ITEM NO. ICMP246AS

REV. A

DWG NO. PSMPP246AS

PAGE NO. 2

