

Cable ID: SP-CABR5EBL-06828 EZ-EZ

Date / Time: 01/13/2014 04:03:30 PM

Headroom 8.1 dB (NEXT 36-45)

Test Limit: TIA Cat 5e Perm. Link

Cable Type: Cat 5e UTP

Calibration Date: 10/17/2013

Operator: Mike N.

Software Version: 2.7400

Limits Version: 1.9300

NVP: 69.0%

Test Summary: PASS

Model: DTX-1800

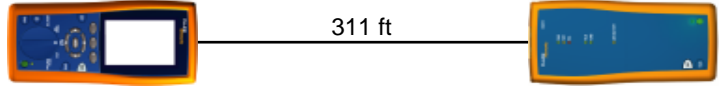
Main S/N: 9503051

Remote S/N: 9503052

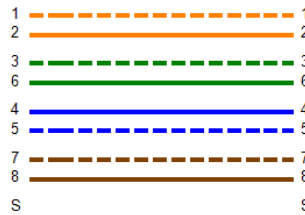
Main Adapter: DTX-PLA002

Remote Adapter: DTX-PLA002

Length (ft), Limit 295	[Pair 78]	311
Prop. Delay (ns), Limit 498	[Pair 36]	475
Delay Skew (ns), Limit 44	[Pair 36]	16
Resistance (ohms)	[Pair 36]	16.6
Insertion Loss Margin (dB)	[Pair 12]	1.2
Frequency (MHz)	[Pair 12]	100.0
Limit (dB)	[Pair 12]	21.0

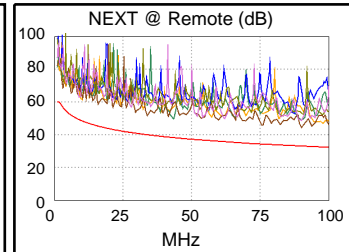
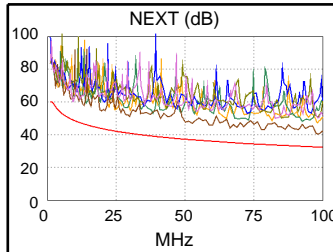


Wire Map (T568B)
PASS

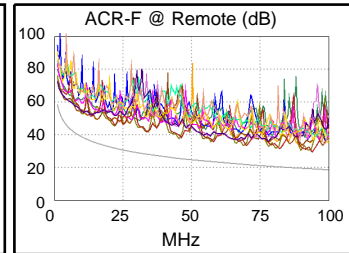
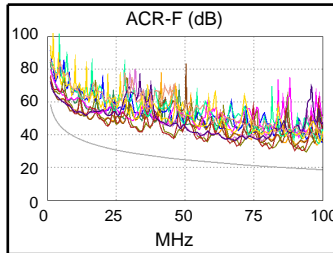


Worst Case Margin Worst Case Value

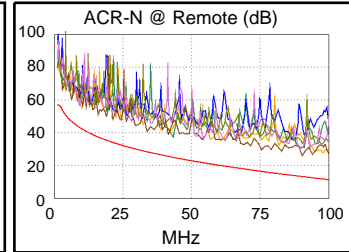
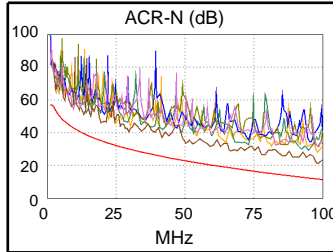
PASS	MAIN	SR	MAIN	SR
Worst Pair	36-45	36-45	36-45	36-45
NEXT (dB)	8.1	11.3	8.1	11.3
Freq. (MHz)	98.0	75.8	98.0	90.3
Limit (dB)	32.4	34.3	32.4	33.0
Worst Pair	36	45	36	45
PS NEXT (dB)	10.0	11.9	10.0	11.9
Freq. (MHz)	98.0	90.0	98.0	90.3
Limit (dB)	29.4	30.1	29.4	30.0



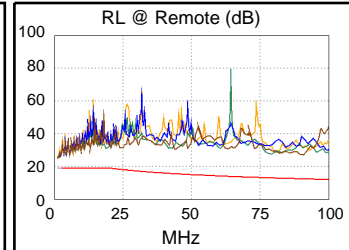
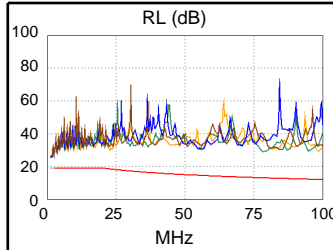
PASS	MAIN	SR	MAIN	SR
Worst Pair	36-45	45-36	36-45	45-36
ACR-F (dB)	10.3	10.3	10.3	10.3
Freq. (MHz)	94.0	94.0	94.0	94.0
Limit (dB)	19.2	19.2	19.2	19.2
Worst Pair	36	36	36	36
PS ACR-F (dB)	12.1	12.3	12.2	12.3
Freq. (MHz)	68.8	94.0	92.8	94.0
Limit (dB)	18.9	16.2	16.3	16.2



N/A	MAIN	SR	MAIN	SR
Worst Pair	36-45	36-45	36-45	36-45
ACR-N (dB)	9.5	12.2	9.5	12.7
Freq. (MHz)	98.0	3.0	98.0	90.5
Limit (dB)	11.7	53.3	11.7	13.2
Worst Pair	36	45	36	45
PS ACR-N (dB)	11.5	13.4	11.5	13.4
Freq. (MHz)	98.0	90.3	98.0	90.3
Limit (dB)	8.7	10.2	8.7	10.2



PASS	MAIN	SR	MAIN	SR
Worst Pair	36	36	36	36
RL (dB)	7.4	7.1	7.4	7.1
Freq. (MHz)	2.4	2.4	2.4	2.4
Limit (dB)	19.0	19.0	19.0	19.0



Compliant Network Standards:

10BASE-T	100BASE-TX	100BASE-T4
1000BASE-T	ATM-25	ATM-51
ATM-155	100VG-AnyLan	TR-4
TR-16 Active	TR-16 Passive	