



# Cable ID: CAT6 EZ-PP-PCS

# Test Summary: PASS

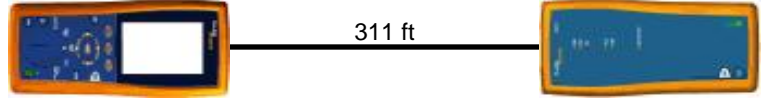
Date / Time: 02/17/2012 04:38:39pm  
 Headroom: 7.0 dB (NEXT 36-78)  
 Test Limit: TIA Cat 6 Channel  
 Cable Type: Cat 6 UTP

Operator: Michael N.  
 Software Version: 2.5200  
 Limits Version: 1.7000  
 NVP: 69.0%

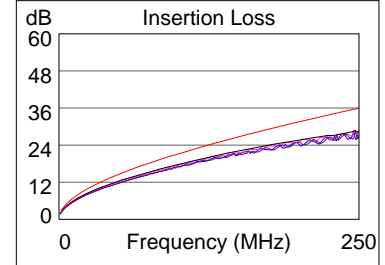
Model: DTX-1800  
 Main S/N: 9503051  
 Remote S/N: 9503052  
 Main Adapter: DTX-CHA002  
 Remote Adapter: DTX-CHA002

## Wire Map (T568B)

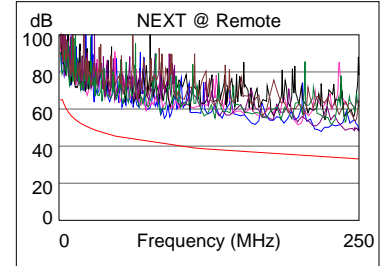
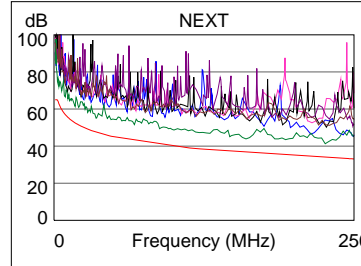
**PASS**



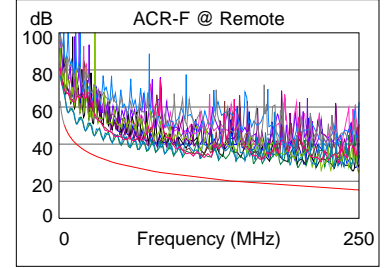
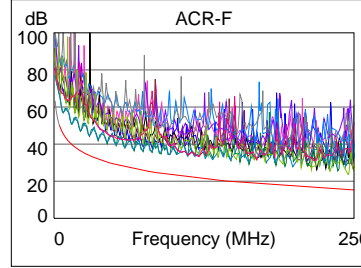
Length (ft), Limit 328	[Pair 78]	311
Prop. Delay (ns), Limit 555		480
Delay Skew (ns), Limit 50		22
Resistance (ohms)	[Pair 36]	16.4
Insertion Loss Margin (dB)	[Pair 45]	6.8
Frequency (MHz)	[Pair 45]	246.5
Limit (dB)	[Pair 45]	35.6



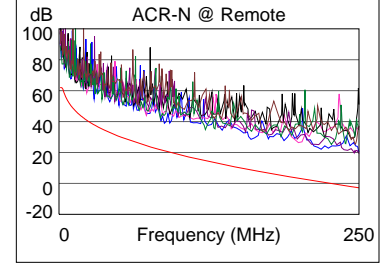
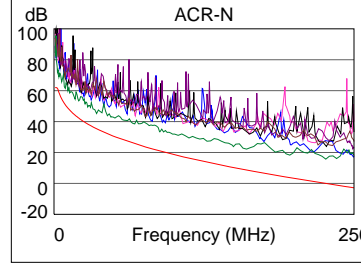
	Worst Case Margin		Worst Case Value	
	MAIN	SR	MAIN	SR
<b>PASS</b>				
Worst Pair	36-78	36-78	36-78	12-36
<b>NEXT (dB)</b>	7.0	13.2	7.4	13.3
Freq. (MHz)	159.5	2.9	226.0	217.0
Limit (dB)	36.5	65.0	33.9	34.2
Worst Pair	78	36	78	36
<b>PS NEXT (dB)</b>	9.3	14.5	9.3	15.0
Freq. (MHz)	159.5	217.0	227.0	250.0
Limit (dB)	33.6	31.2	30.9	30.2



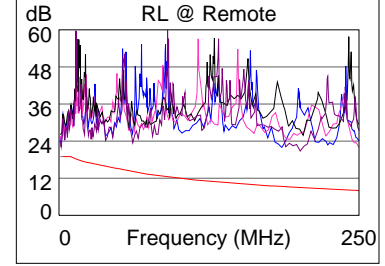
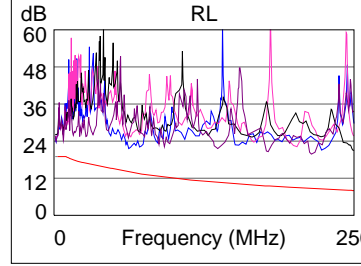
	Worst Case Margin		Worst Case Value	
	MAIN	SR	MAIN	SR
<b>PASS</b>				
Worst Pair	78-12	78-12	78-12	78-12
<b>ACR-F (dB)</b>	8.2	9.4	8.2	9.7
Freq. (MHz)	245.0	218.5	245.0	249.5
Limit (dB)	15.5	16.5	15.5	15.3
Worst Pair	12	36	12	78
<b>PS ACR-F (dB)</b>	10.2	10.8	10.2	11.0
Freq. (MHz)	245.5	111.0	245.5	245.5
Limit (dB)	12.5	19.4	12.5	12.5



	Worst Case Margin		Worst Case Value	
	MAIN	SR	MAIN	SR
<b>N/A</b>				
Worst Pair	36-78	36-78	36-78	36-45
<b>ACR-N (dB)</b>	9.6	13.8	15.1	22.1
Freq. (MHz)	3.0	2.9	227.0	250.0
Limit (dB)	61.5	61.6	-0.1	-2.8
Worst Pair	78	36	36	36
<b>PS ACR-N (dB)</b>	11.4	15.6	19.4	22.6
Freq. (MHz)	9.3	3.0	249.5	250.0
Limit (dB)	48.5	58.5	-5.7	-5.8



	Worst Case Margin		Worst Case Value	
	MAIN	SR	MAIN	SR
<b>PASS</b>				
Worst Pair	78	78	78	78
<b>RL (dB)</b>	5.2	5.2	10.5	11.4
Freq. (MHz)	7.8	4.6	216.0	200.0
Limit (dB)	19.0	19.0	8.7	9.0



Compliant Network Standards:  
 10BASE-T      100BASE-TX      100BASE-T4  
 1000BASE-T    ATM-25            ATM-51  
 ATM-155        100VG-AnyLAN    TR-4  
 TR-16 Active    TR-16 Passive