

### Cable ID: SP-CABR5EBL-06828 EZ-PATCH

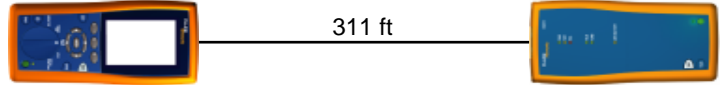
Date / Time: 01/13/2014 04:21:03 PM  
**Headroom 8.2 dB (NEXT 36-45)**  
**Test Limit: TIA Cat 5e Perm. Link**  
 Cable Type: Cat 5e UTP  
 Calibration Date: 10/17/2013

Operator: Mike N.  
 Software Version: 2.7400  
 Limits Version: 1.9300  
 NVP: 69.0%

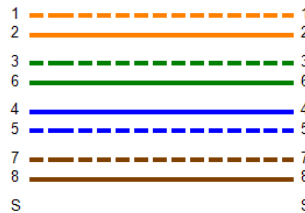
### Test Summary: PASS

Model: DTX-1800  
 Main S/N: 9503051  
 Remote S/N: 9503052  
 Main Adapter: DTX-PLA002  
 Remote Adapter: DTX-PLA002

Length (ft), Limit 295	[Pair 78]	311
Prop. Delay (ns), Limit 498	[Pair 36]	475
Delay Skew (ns), Limit 44	[Pair 36]	16
Resistance (ohms)	[Pair 36]	16.5
Insertion Loss Margin (dB)	[Pair 12]	1.2
Frequency (MHz)	[Pair 12]	100.0
Limit (dB)	[Pair 12]	21.0

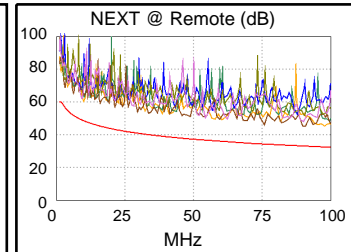
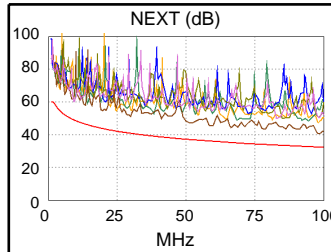


Wire Map (T568B)  
**PASS**

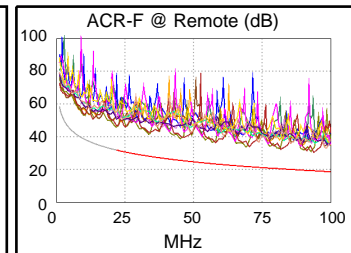
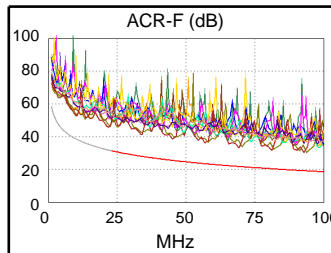


Worst Case Margin Worst Case Value

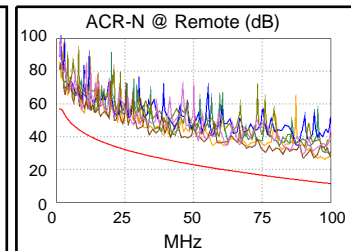
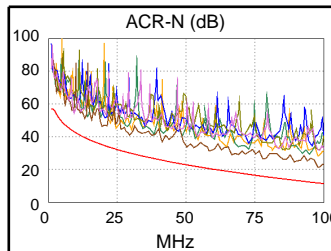
PASS	MAIN	SR	MAIN	SR
Worst Pair	36-45	12-36	36-45	36-45
<b>NEXT (dB)</b>	8.2	11.8	8.2	11.8
Freq. (MHz)	98.0	9.9	98.0	90.3
Limit (dB)	32.4	48.6	32.4	33.0
Worst Pair	36	45	36	36
<b>PS NEXT (dB)</b>	10.1	13.0	10.1	13.3
Freq. (MHz)	98.0	90.0	98.0	94.0
Limit (dB)	29.4	30.1	29.4	29.7



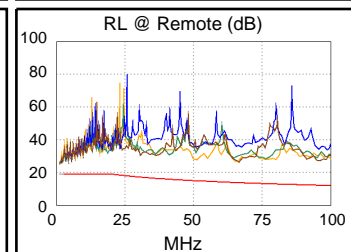
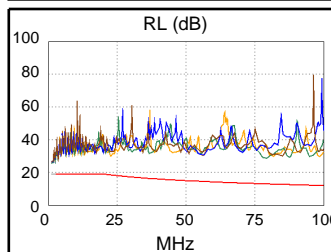
PASS	MAIN	SR	MAIN	SR
Worst Pair	36-45	45-36	36-45	45-36
<b>ACR-F (dB)</b>	11.1	11.1	11.1	11.1
Freq. (MHz)	93.8	93.8	93.8	93.8
Limit (dB)	19.2	19.2	19.2	19.2
Worst Pair	36	45	45	45
<b>PS ACR-F (dB)</b>	12.6	12.3	12.6	12.3
Freq. (MHz)	92.8	89.8	94.0	89.8
Limit (dB)	16.3	16.6	16.2	16.6



N/A	MAIN	SR	MAIN	SR
Worst Pair	36-45	12-36	36-45	12-36
<b>ACR-N (dB)</b>	9.6	12.1	9.6	14.5
Freq. (MHz)	98.0	9.9	98.0	97.8
Limit (dB)	11.7	42.4	11.7	11.7
Worst Pair	36	12	36	36
<b>PS ACR-N (dB)</b>	11.6	13.3	11.6	15.7
Freq. (MHz)	98.0	10.0	98.0	100.0
Limit (dB)	8.7	39.3	8.7	8.3



PASS	MAIN	SR	MAIN	SR
Worst Pair	36	36	36	78
<b>RL (dB)</b>	7.6	7.4	7.6	12.5
Freq. (MHz)	2.4	2.4	2.4	66.3
Limit (dB)	19.0	19.0	19.0	13.8



Compliant Network Standards:  
 10BASE-T      100BASE-TX      100BASE-T4  
 1000BASE-T    ATM-25            ATM-51  
 ATM-155       100VG-AnyLan    TR-4  
 TR-16 Active    TR-16 Passive