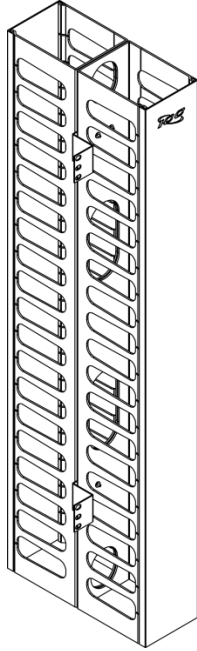


4"x 5"x 35", Double-Sided, Vertical Finger Duct Panel



Package Includes:

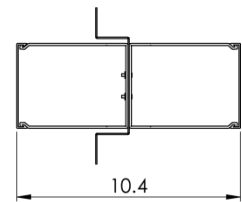
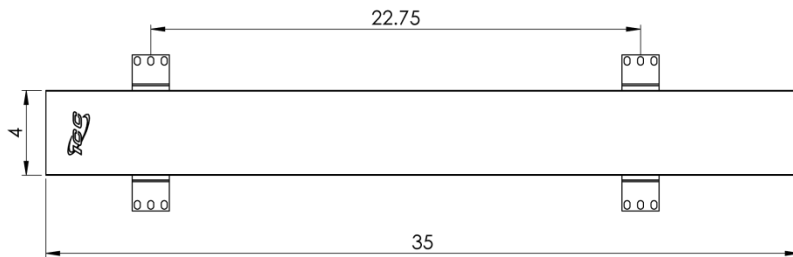
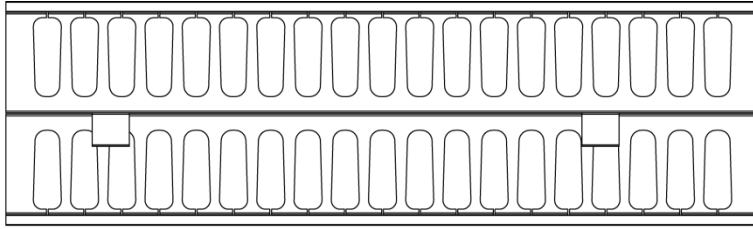
- A. 4"x 5"x 35" Double Sided Vertical Finger Duct Panel, **1 Piece**
- B. 4"x 5"x 35" Vertical Finger Duct Panel Cover, **2 Pieces**
- C. #12-24 x 5/8" Pan Head, Pilot Point Machine Screw, **8 Pieces**

Features and Benefits

- Provides flexibility for vertical cable management for the front and back of a rack
- Fits on the sides of individual racks but can also be used to join two distribution racks
- Equipped with feed-through holes on the back side for easier cable routing from front to back
- Includes a cover to conceal routed cables providing a neat and clean appearance
- Compatible with all ICC distribution racks

Cable Fill Capacities (60% Fill)						
Feature	Channel Depth (WxD)	Usable Area (In ²)	CAT 5e (.18" OD)	CAT 6 (.225" OD)	CAT 6A (.34" OD)	Fiber (.079" OD)
5" Channel Size	3.75" x 4.89" (2X)*	18.36 In ² (2X)*	175 (2X)*	141 (2X)*	48 (2X)*	230 (2X)*
Finer Spacing	1.3" x 3.67"	4.31 In ²	41	33	11	54
Large Pass-through	2.25" x 5"	10.16 In ²	98	79	27	128
Small Pass-through	2" x 2.5"	4.14 In ²	40	32	11	52

**Cable capacities are based on ICC's cable diameter*



NOTE: UNLESS OTHERWISE SPECIFIED

1. Finger Duct Panel:
 - A. Material: PVC, UL 94V-0
 - B. Finish: Texture, Black
2. Panel Cover:
 - A. Material: PVC, UL 94V-0
 - B. Color: Black
3. Mounting Bracket:
 - A. Material: 16 GA CRS
 - B. Surface Finish: Black Powder Coat