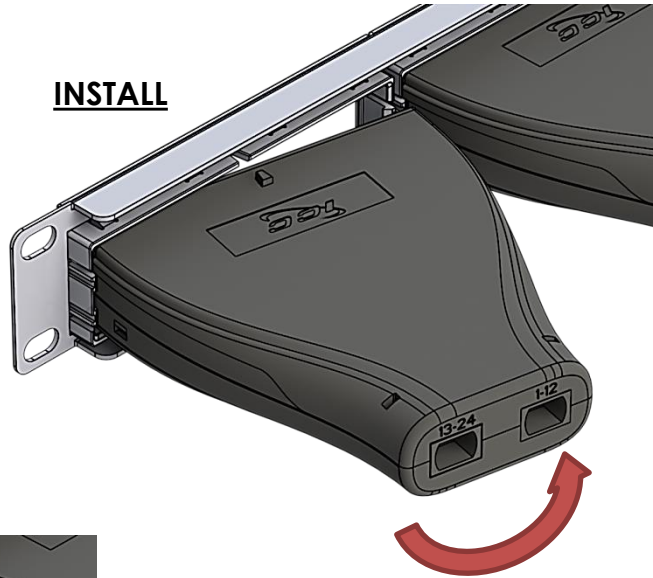




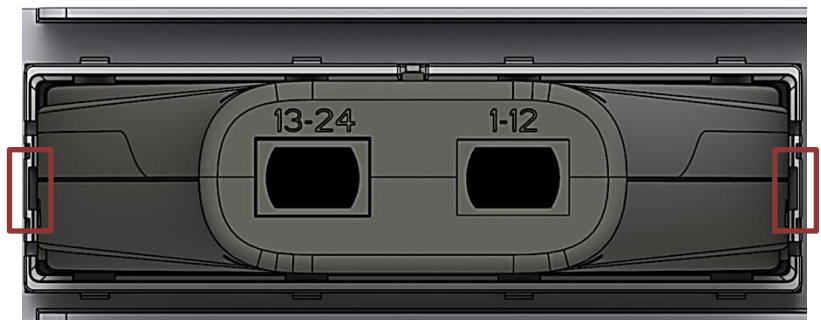
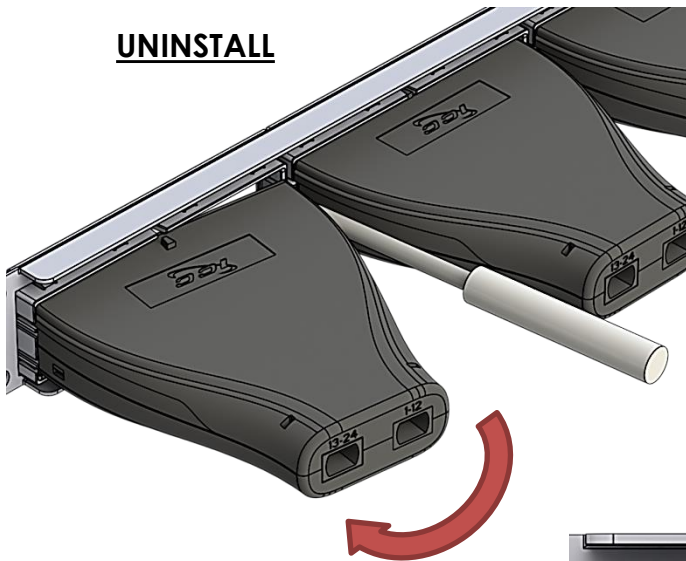
# HD MPO Cassettes Patch Panel

## INSTALLATION INSTRUCTIONS

**INSTALL**



**UNINSTALL**



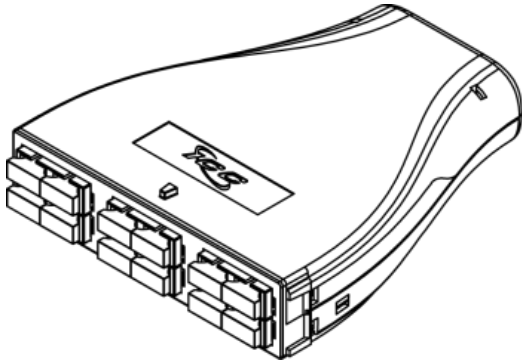
Insert flat/slotted screw driver into either side tab to remove cassettes.

888-ASK-4ICC

csr@icc.com

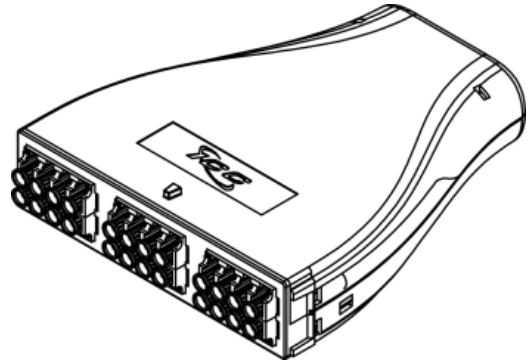
icc.com

# HD MPO Cassettes Patch Panel



## SC To MPO Cassettes

**ICFC12MSPG** - 12-Fiber, OM3, 50/125  
**ICFC12MSP5** - 12-Fiber, OM2, 50/125  
**ICFC12MSP6** - 12-Fiber, OM1, 62.5/125  
**ICFC12SSP9** - 12-Fiber, OS1, 9/125



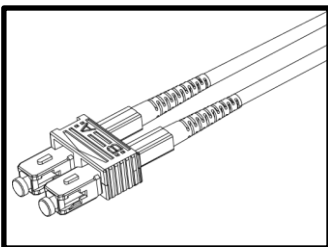
## LC To MPO Cassettes

**ICFC24MLPG** - 24-Fiber, OM3, 50/125  
**ICFC24MLP5** - 24-Fiber, OM2, 50/125  
**ICFC24MLP6** - 24-Fiber, OM1, 62.5/125  
**ICFC24SLP9** - 24-Fiber, OS1, 9/125

## FEATURES & BENEFITS

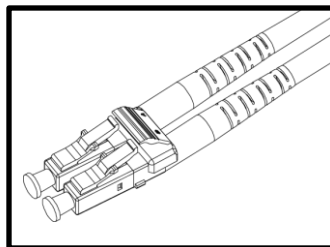
- High quality ABS, UL94V-0 material allows for compact and durable cassettes.
- Cassette offers a plug and play solution which saves assembly and termination time.
- Design to fit ICC's Fiber Optic Blank Patch panel 1 RMS, IC107PPC04
- MPO connector reduces insertion loss which enhances channel link performance.
- Suitable for any applications with a need for high bandwidth with longer distances.
- LC to MPO cassettes allows up to 96 fibers within 1 RMS / SC to MPO cassettes allows up to 48 fibers within 1 RMS
- Available in black

## OPTIONAL ACCESSORIES



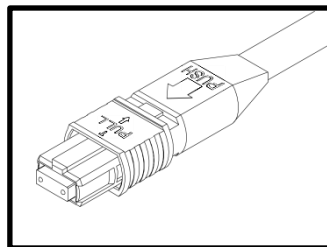
### SC-SC Jumper

**ICFOJ8C7xx** 50/125, 10G  
**ICFOJ8G7xx** 50/125, MM  
**ICFOJ8C3xx** 62.5/125, MM  
**ICFOJ8C5xx** 9/125, SM



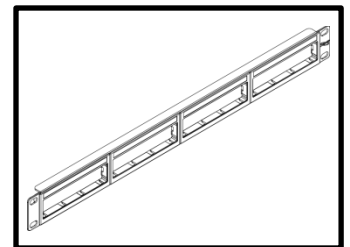
### LC-LC Jumper

**ICFOJ1G7xx** 50/125, 10G  
**ICFOJ1M7xx** 50/125, MM  
**ICFOJ1M3xx** 62.5/125, MM  
**ICFOJ1M5xx** 9/125, SM



### MPO-MPO 12-Fiber Jumper

**ICFOJATGxx** 50/125, 10G  
**ICFOJATMxx** 50/125, MM  
**ICFOJATNxx** 62.5/125, MM  
**ICFOJATSxx** 9/125, SM



### Fiber Optic Blank Patch Panel

**IC107PPC04** Plug and Play Cassette , 1 RMS

888-ASK-4ICC

csr@icc.com

icc.com