



# Value Leader

## Mission

ICC is a manufacturer of structured cabling products, with a focus on meeting the needs of small and medium-sized cabling system Installers. Our goal is to become the preferred and most reliable brand for our Installers.

## Value

We are committed to constantly reducing product costs while delivering superior value, enabling our Installers to bid competitively and win more projects.

## Standard

Our products conform to the highest industry standards set by FCC®, TIA®, and UL®, and we back them with comprehensive warranty programs. We take pride in that Elite Installers consistently rate our products higher in performance than the big brands.

## One

We offer nine product categories to accommodate most end-to-end cabling projects. Installers can consolidate their cabling supplies through one manufacturer with one warranty program.

## Distribution

We have hundreds of distribution partners throughout the United States to serve our Installers, and you can find them listed on [icc.com/distributor](http://icc.com/distributor).



# Table of Contents

Work Area Outlets

1

Patch Panels and Cross-Connect

19

Racks and Cable Management

29

Residential Enclosures

43

Premise Cables

49

Cords and Cable Assemblies

53

Fiber Optic Systems

59

Cable Raceway

67

Tools and Accessories

71

Part Number Index

75







## Small & Mid-Sized Installers

ICC helps small and medium-sized Installers win more projects with tailored solutions.



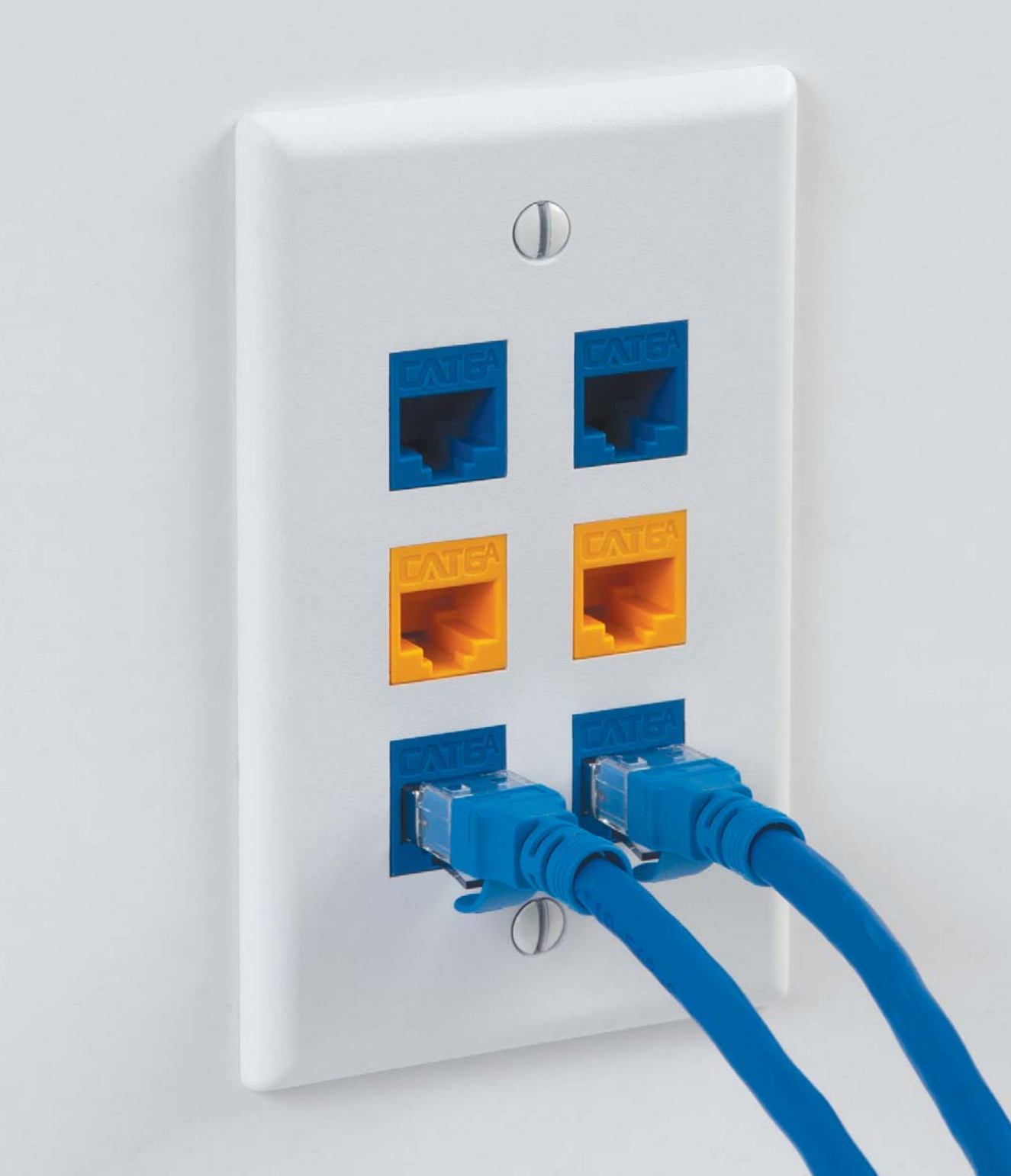
## Non-Spec Projects

ICC specializes in non-spec projects and helps Elite Installers win them over expensive spec brands.



## Ease of Installation

ICC's easy-to-install products reduce training time and labor costs.



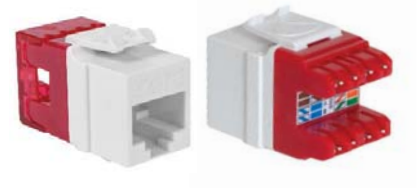
Modular Connectors	2-9
Faceplates	10-13, 16-17
Surface Mount Boxes	14-15
Surface Mount Jacks	15
Mounting Boxes	18
Mobile Patch Boxes	18

# High-Density Keystone Connectors



- Rear split-back IDC
- Narrow body for high-density applications

CAT 6	Single	10-Pack	25-Pack	400-Pack	400-Pack w/ JackEasy Tool
Colors (xx)*:	IC1078F6xx*	IC107F6Txx*	IC107F6Cxx*	IC107F6Rxx*	IC107F6Vxx*
WH					
BL					
BK					
OR					
IV					
RD					
YL					
GN					
GY					
AL					
PR					



CAT 5e	Single	10-Pack	25-Pack
Colors (xx)*:	IC1078F5xx*	IC107F5Txx*	IC107F5Cxx*
WH			
BL			
BK			
OR			
IV			
RD			
YL			
GN			
GY			
AL			



Voice UTP	Single	10-Pack	25-Pack
Colors (xx)*:	IC1076F0xx*	IC1076FTxx*	IC1076FCxx*
WH			
BL			
BK			
IV			
GY			
AL			



WORK AREA OUTLETS

# High-Density Keystone Connectors



- Rear split-back IDC
- Narrow body for high-density applications

CAT 6A UTP	Single	10-Pack	25-Pack
Colors (xx)*:	IC1078GAxx*	IC107GATxx*	IC107GACxx*
WH			
BL			
BK			
OR			
IV			
RD			
YL			



CAT 6A FTP	Single	10-Pack	25-Pack
Shielded	IC1078S6A0	IC107SATA0	IC107SACA0



Shielded wiring cap suppresses Alien Crosstalk



Enhanced crosstalk cancelation reduces Return Loss



Metal body shields from electromagnetic interference



Metal body rejects noise and unwanted signals

# EZ<sup>®</sup> Keystone Connectors



- Rear in-line IDC
- Pair-to-pair wiring

CAT 6	Single	10-Pack	25-Pack	400-Pack	400-Pack w/ JackEasy Tool
Colors (xx)*:	IC1078L6xx*	IC107L6Txx*	IC107L6Cxx*	IC107L6Rxx*	IC107L6Vxx*
WH					
BL					
BK					
OR					
IV					
RD					
YL					
GN					
GY					
AL					
PR					



CAT 5e UTP	Single	10-Pack	25-Pack
Colors (xx)*:	IC1078E5xx*	IC107E5Txx*	IC107E5Cxx*
WH			
BL			
BK			
OR			
IV			
RD			
YL			
GN			
GY			
AL			

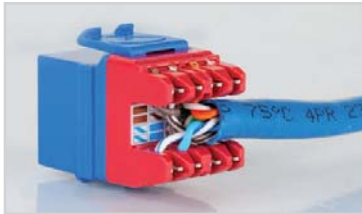


Voice UTP	Single	10-Pack	25-Pack
Colors (xx)*:	IC1076V0xx*	IC1076VTxx*	IC1076VCxx*
WH			
BL			
BK			
IV			
GY			
AL			

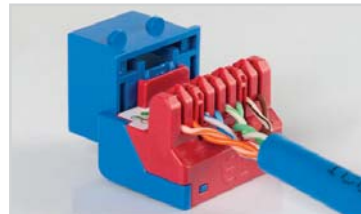




# HD or EZ<sup>®</sup>



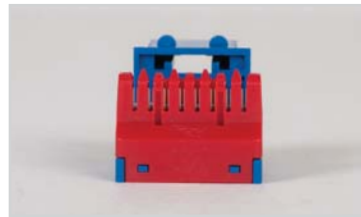
**Split-Back IDC**  
Compact termination



**In-Line IDC**  
Easy pair-to-pair wiring



**Slim Body**  
Increase connectivity  
in limited space



**Wide Body**  
Grip connectors  
with comfort



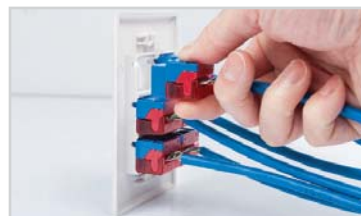
**Maximize  
Rack Space**  
Up to 48 ports in 1 RMS



**Easy Rack  
Installation**  
More working space



**Maximize  
Outlet Space**  
Up to 6 ports in  
a decor faceplate



**Easy Outlet  
Installation**  
Use thumb and fingers



**One Tool**



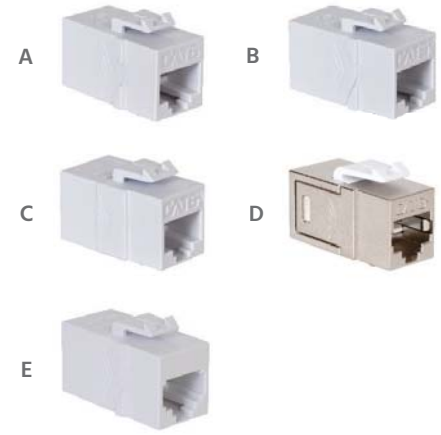
**For Both**



# Keystone Couplers

- HD style housing with female-to-female connectors

Description	Single	10-Pack	25-Pack
CAT 6 [A]	IC107CP6xx* 	IC107C6TBK 	IC107C6CBK 
CAT 5e [B]	IC107C5Exx* 	IC107C5TBK 	IC107C5CBK 
CAT 6A UTP [C]	IC107C6Axx* 	IC107CATBK 	IC107CACBK 
CAT 6A FTP Shielded [D]	IC107C6AS1	IC107CATS1	N/A
Voice 6P6C pin 1-6 [E]	IC107C6Sxx* 	N/A	N/A
Voice 6P6C pin 1-1	IC107C6Rxx* 	N/A	N/A



# Fiber-Optic Couplers

- HD style housing with female-to-female connectors
- Dust caps are included

Description	Single
LC Duplex, aqua adapter [E]	IC107LCGxx* 
LC Duplex, blue adapter	IC107LC2xx* 
SC Simplex, blue adapter [F]	IC107SC2xx* 
ST Simplex, metal adapter	IC107ST2xx* 



# Blank Inserts

- HD style housing

Description	10-Pack	100-Pack
Fill-in [G]	IC107BN0xx* 	IC107BNVxx* 
Feed-through, 0.30" diameter hole [H]	IC107BN2WH 	N/A



\*Colors (xx):

WH (White)	BK (Black)	IV (Ivory)	GY (Gray)	AL (Almond)

# F-Type Video Jacks



- HD style housing with female-to-female connectors
- Works with RG-6 and RG-59 coaxial cables



Description	Single	10-Pack	25-Pack
Nickel-plated, 3 GHz [A]	IC107B9Fxx* [Color swatches: WH, BK, IV, GY, AL]	IC1079FTWH	IC107BFDWH
Gold-plated, 3 GHz [B]	IC107B9Gxx* [Color swatches: WH, BK, IV, GY, AL]	N/A	IC107BGDWH
Nickel-plated, 2 GHz	IC107B5Fxx* [Color swatches: WH, BK, IV, GY, AL]	IC1075FTWH	IC107BFCWH
Gold-plated, 2 GHz	IC107B5Gxx* [Color swatches: WH, BK, IV, GY, AL]	N/A	IC107BGCWH
Nickel-plated, 2 GHz, RG-6Q, compression [C]	IC107FQGWH	N/A	N/A

# Dual Audio Speaker Connectors

- HD style housing with push buttons

Description	Single
Rear crimp-on [D]	IC107DSCxx* [Color swatches: WH, BK, IV, GY, AL]
Rear buttons [E]	IC107DSBxx* [Color swatches: WH, BK, IV, GY, AL]



# Binding Post Audio Speaker Connectors

- HD style housing with gold-plated posts
- Posts work with banana plugs

Description	Single
Rear set-screw connection	IC107PMGxx* [Color swatches: WH, BK, IV, GY, AL]



# 3.5mm Stereo Audio Speaker Couplers

- HD style housing with 3.5mm jack
- Rear push-pins accept 22~24 AWG UTP wires

Description	Single
Female-to-push-pin	IC107SAPxx* [Color swatches: WH, BK, IV, GY, AL]



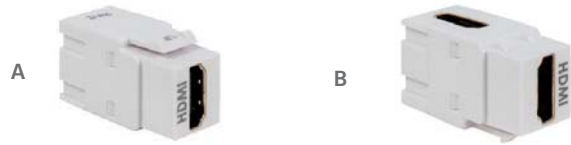
\*Colors (xx):  
 WH (White)   BK (Black)   IV (Ivory)   GY (Gray)   AL (Almond)



# HDMI Couplers

- HD style housing with female-to-female connectors

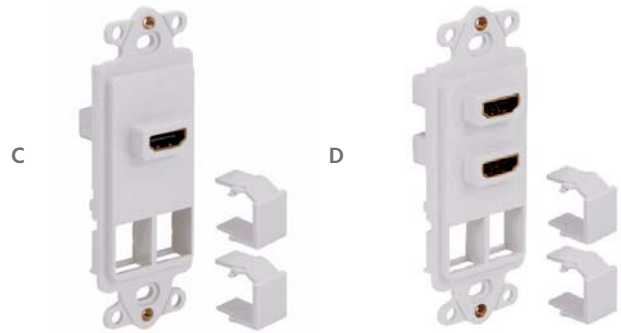
Description	Single	10-Pack	25-Pack
Straight <b>[A]</b>	IC107HDMxx* 	IC107HDTWH 	IC107HDCWH 
Angled 90° <b>[B]</b>	IC107AHMWH 	N/A	N/A



# HDMI Décorex™ Inserts

- Works with Décorex faceplates and includes two blank inserts
- Female-to-female connectors

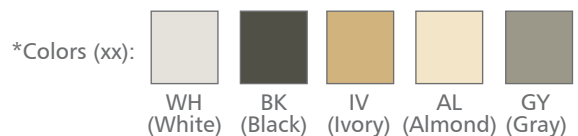
Description	Single
1 HDMI, 2 HD Ports <b>[C]</b>	IC107DH2xx* 
2 HDMI, 2 HD Ports <b>[D]</b>	IC107DDHxx* 



# USB Couplers

- HD style housing with female-to-female connectors

Description	Single
90°, A-to-A, USB 3.0 <b>[E]</b>	IC107AUSWH 
A-to-A, USB 3.0 <b>[F]</b>	IC107UAAWH 
Reversible A-to-B, USB 2.0 <b>[G]</b>	IC107UABWH 



# HDMI



Straight-through  
Typical maximum operating distance of HDMI cable: 50 feet  
90°

Rear

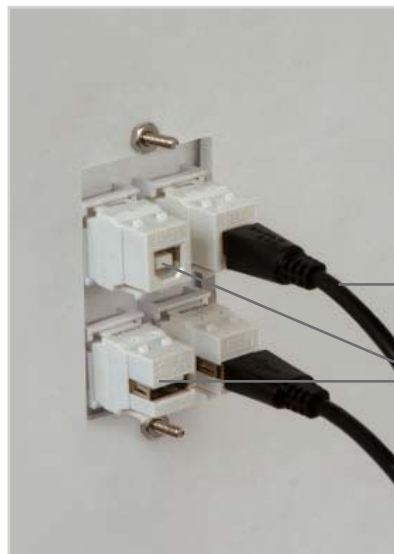
# USB 3.0



Straight-through  
Typical maximum operating distance of USB 3.0/USB 3.1 cable: 9 feet and 10 inches  
90°

Rear

# USB 2.0



Typical maximum operating distance of USB 2.0 cable: 16 feet and 5 inches  
Reversible

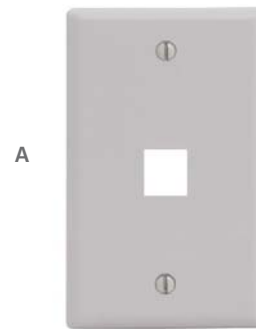
Rear



# Classic Faceplates

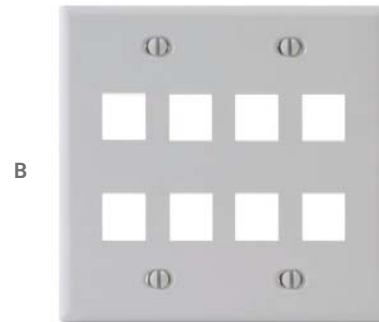
- Durable ABS plastic

Description	Single	10-Pack	25-Pack
Blank, single gang	IC630EB0xx* 	N/A	N/A
1 Port, single gang [A]	IC107F01xx* 	IC107F1Txx* 	IC107F1Cxx* 
2 Ports, single gang	IC107F02xx* 	IC107F2Txx* 	IC107F2Cxx* 
3 Ports, single gang	IC107F03xx* 	IC107F3Txx* 	IC107F3Cxx* 
4 Ports, single gang	IC107F04xx* 	IC107F4Txx* 	IC107F4Cxx* 
6 Ports, single gang	IC107F06xx* 	N/A	N/A



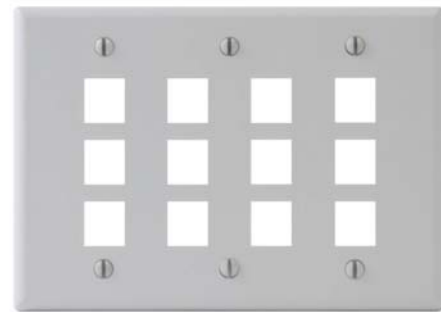
A

Description	Single	25-Pack
Blank, double gang	IC630EBDxx* 	N/A
8 Ports, double gang [B]	IC107FD8xx* 	N/A
12 Ports, double gang	IC107F12xx* 	N/A



B

Description	Single	25-Pack
12 Ports, triple gang	IC107FT0WH 	N/A



C

# Classic Stainless Steel Faceplates

Description	Single
Blank, single gang	IC630EBSSS
1 Port, single gang [C]	IC107SF1SS
2 Ports, single gang	IC107SF2SS
3 Ports, single gang [D]	IC107SF3SS
4 Ports, single gang	IC107SF4SS
6 Ports, single gang	IC107SF6SS
4 Ports, double gang	IC107DF4SS
8 Ports, double gang	IC107DF8SS



C



D

\*Colors (xx):

WH (White)	IV (Ivory)	AL (Almond)	BK (Black)	GY (Gray)

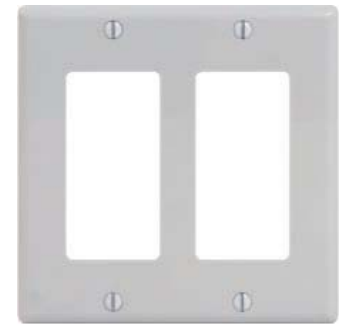
# Décorex™ Faceplates and Inserts



Faceplate	Single
1 Insert, single gang [A]	IC107DFSxx* 
2 Inserts, double gang	IC107DFDxx* 
3 Inserts, triple gang [B]	IC107DFTWH 
1 Insert, single gang, stainless steel	IC107DFSSS
2 Inserts, double gang, stainless steel [C]	IC107DFDSS



A



B



C

Insert	Single
Blank, single gang	IC630DIBxx* 
1 Port, single gang [D]	IC107DI1xx* 
2 Ports, single gang	IC107DI2xx* 
3 Ports, single gang [E]	IC107DI3xx* 
6 HD Ports, single gang [F]	IC107DI6xx* 



D



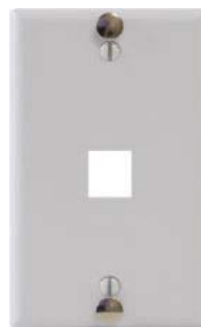
E



F

## Telephone Faceplates with Hanging Standoffs

Description	Single
1 Port, single gang [G]	IC107FFWxx* 
1 Port, stainless steel, single gang [H]	IC107FFWSS



G



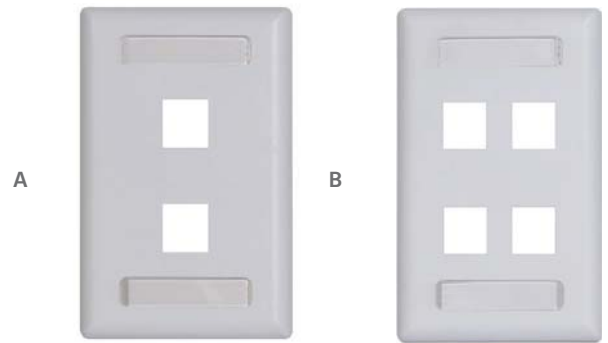
H

\*Colors (xx):  
 WH (White)  
 IV (Ivory)  
 BK (Black)



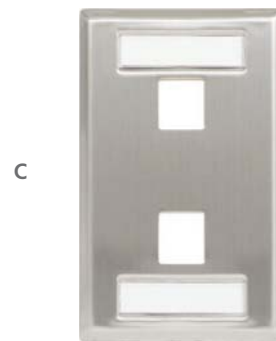
## Classic Faceplates with Station ID

Description	Single	10-Pack
1 Port, single gang	IC107S01xx* 	IC107S1TWH 
2 Ports, single gang [A]	IC107S02xx* 	IC107S2TWH 
3 Ports, single gang	IC107S03xx* 	N/A
4 Ports, single gang [B]	IC107S04xx* 	N/A
6 Ports, single gang	IC107S06xx* 	N/A



## Classic Stainless Steel Faceplates with Station ID

Description	Single
1 Port, single gang	IC107S01SS
2 Ports, single gang [C]	IC107S02SS
3 Ports, single gang	IC107S03SS
4 Ports, single gang	IC107S04SS
6 Ports, single gang	IC107S06SS



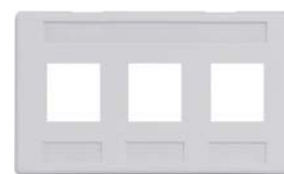
## HD Furniture Faceplates

Description	Single
NEMA Opening: 1.83" H x 2.60" W x 0.19" D, 4 HD Ports [D]	IC107FN4xx* 
TIA Opening: 1.33" H x 2.60" W x 0.19" D, 4 HD Ports	IC107FT4xx* 



## Furniture Faceplates

Description	Single
TIA Opening: 1.30" H x 2.56" W x 0.19" D, 3 Ports	IC107FM3xx* 



\*Colors (xx):

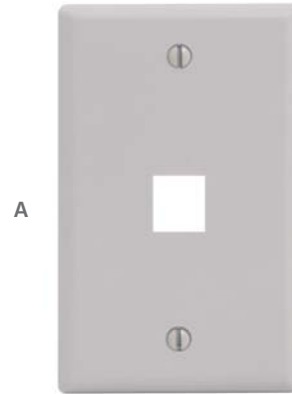
WH (White)	IV (Ivory)	BK (Black)	GY (Gray)

# Classic Oversized Faceplates

- 3.12" W x 4.87" H, covers uneven drywall cuts

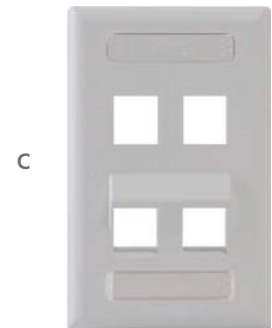
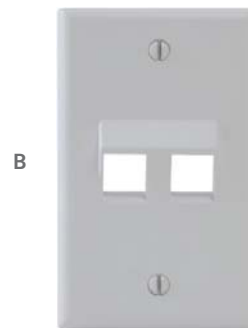


Description	Single
1 Port, single gang <b>[A]</b>	IC107LF1xx* 
2 Ports, single gang	IC107LF2xx* 
3 Ports, single gang	IC107LF3xx* 
6 Ports, single gang	IC107LF6xx* 



# Angled Faceplates

Description	Single
1 Port, single gang	IC107DA1xx* 
2 Ports, single gang <b>[B]</b>	IC107DA2xx* 
4 Ports, single gang	IC107DA4xx* 
4 Ports, 2 flat/2 angled, with station ID, single gang <b>[C]</b>	IC107AS4WH 



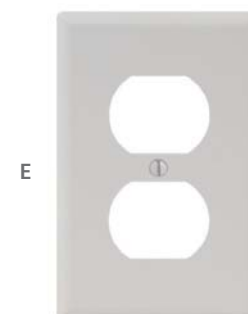
# Bulk Nose Faceplates

Description	Single
Opening: 1.25" W x 0.90" D, single gang <b>[D]</b>	IC640BSSxx* 
Opening: 2.75" W x 1.15" D, double gang	IC640BDSxx* 



# Configurable Electrical

Description	Single
2 Ports, Faceplate, single gang <b>[E]</b>	IC106FP2xx* 
2 Ports, Insert, single gang	IC107DPIxx* 
4 HD Ports, Insert, single gang <b>[F]</b>	IC1074PIxx* 



\*Colors (xx):   
 WH (White) IV (Ivory) AL (Almond)

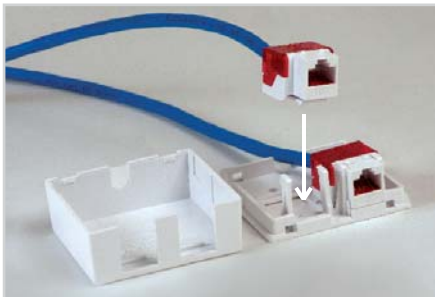
# Surface Mount Boxes

- Two-piece design; cover and base

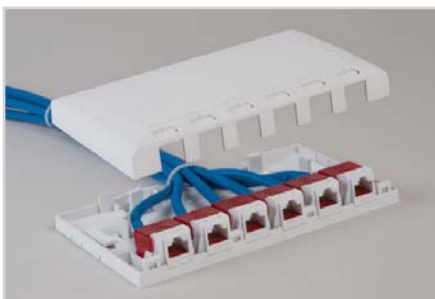


Description	Single	25-Pack
1 Port [A]	IC107SB1xx* 	IC107BC1xx* 
2 Ports [B]	IC107SB2xx* 	IC107BC2xx* 
4 Ports [C]	IC107SB4WH 	N/A
6 Ports [D]	IC107SB6WH 	N/A
12 Ports [E]	IC107SBTxx* 	N/A

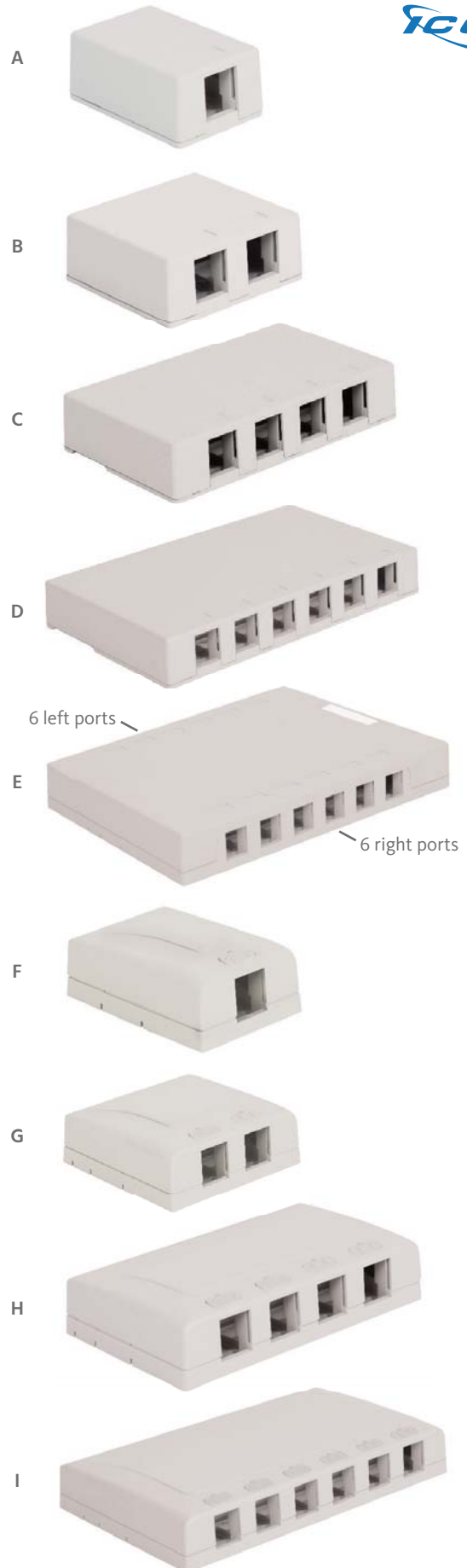
Elite™	Single
1 Port [F]	IC108SB1xx* 
2 Ports [G]	IC108SB2xx* 
4 Ports [H]	IC108SB4xx* 
6 Ports [I]	IC108SB6xx* 



Install connectors tab-side down



Removable cover



\*Colors (xx):

WH (White)	IV (Ivory)	BK (Black)	GY (Gray)



# Surface Mount Boxes Kitted with Jacks



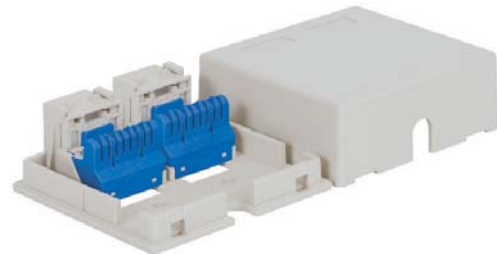
- Three-piece design; cover, base, and connector

CAT 5e	Single
1 Port, 1 Connector, IDC termination [A]	IC625S51xx* 
2 Ports, 2 Connectors, IDC termination [B]	IC625S52xx* 
6P6C	Single
1 Port, 1 Connector, IDC termination	IC625SV1IV 
2 Ports, 2 Connectors, IDC termination	IC625SV2IV 

A



B



Rear

C



## Surface Mount Jack

Description	Single
6P6C, Phillips screw termination [C]	IC625SB6xx* 

## Mounting Options



Adhesive mount



Screw mount

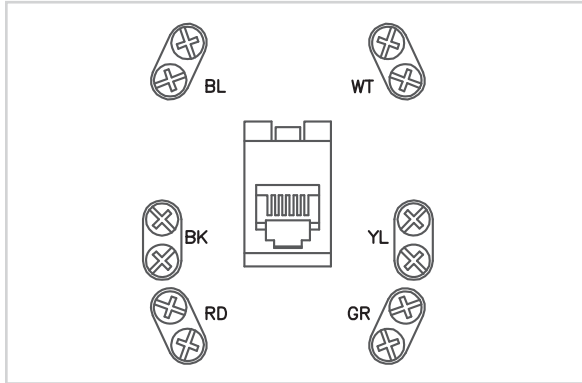
Wiring System (IC625SB6xx*)				
Wire Color	USOC 4C/6C	USOC 8C	WECO 8C	568 8C
W/BL	4	5	5	5
BL	3	4	4	4
W/OR	2	3	1	3
OR	5	6	2	6
W/GN	1	2	3	1
GN	6	7	6	2
W/BR	N/A	8	7	7
BR		1	8	8

\*Colors (xx): WH (White) IV (Ivory)

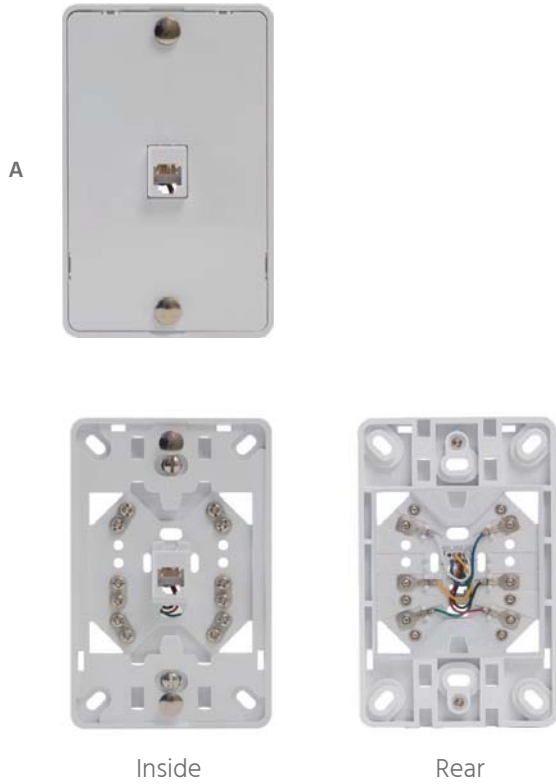
# Telephone Faceplate with Hanging Standoffs



<b>Phillips Screw Termination</b>	<b>Single</b>
6P6C, single gang [A]	IC630DB6xx*

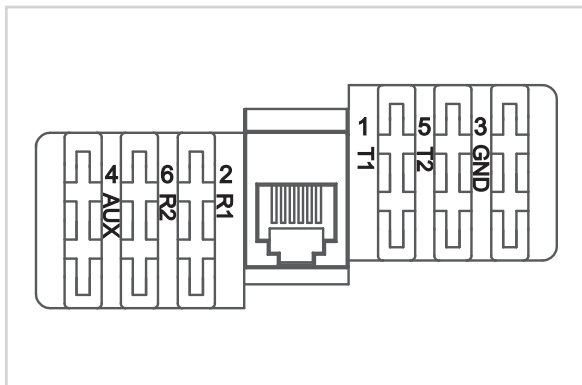


Wiring Diagram

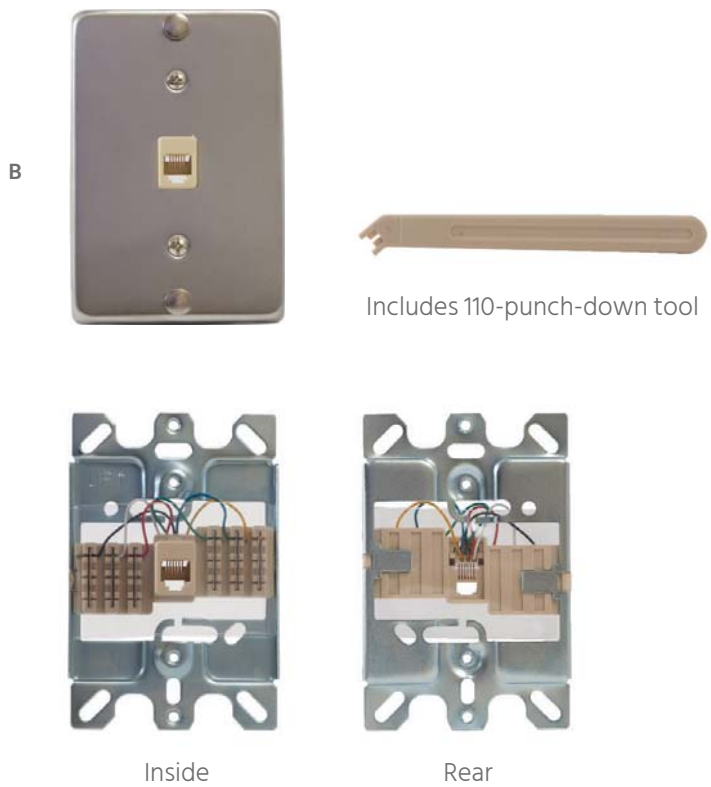


# Stainless Steel Telephone Faceplate with Hanging Standoffs

<b>IDC Termination</b>	<b>Single</b>
6P6C, stainless steel, single gang [B]	IC630DA6SS



Wiring Diagram



\*Colors (xx):

WH (White)	IV (Ivory)

# Integrated Faceplates with Screw Termination

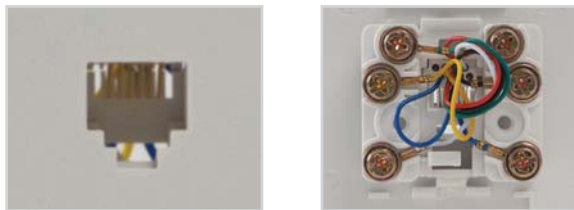


- 6P6C port has rear Phillips screw terminals

Description	Single
6P6C, single gang	IC630E60xx* 
6P6C and F-Type, single gang [A]	IC630E6GWH 
F-Type, single gang [B]	IC630EG0xx* 



Rear



50µ gold-plated contacts

Brass termination lugs



Rear

# Category Rated Integrated Faceplates with IDC Termination

- One-piece design

Description	Single
CAT 5e and F-Type, single gang	ICRDS0F5WH 
CAT 5e and 6P6C, single gang [C]	ICRDSV05WH 
CAT 5e, 6P6C, and F-Type, single gang [D]	ICRDSVF5WH 



Rear



Rear IDC terminals with integrated wiring diagrams




Rear

\*Colors (xx): WH (White) IV (Ivory)



## Mounting Boxes

Description	Single
Single Gang	IC107MRSxx* 
Double Gang <b>[A]</b>	IC107MRDxx* 

A



## Junction Boxes

- Two-piece design; box and base

Description	Single
Single Gang <b>[B]</b>	ICACSMBSxx* 
Double Gang	ICACSMBDxx* 

B



## Mobile Patch Boxes

Description	Single
Configurable, 6 ports, two-piece design; cover and base <b>[C]</b>	IC107MB6BK
CAT 6, 6 ports, IDC termination	ICMPPMB606
CAT 5e, 6 ports, IDC termination <b>[D]</b>	ICMPPMB506

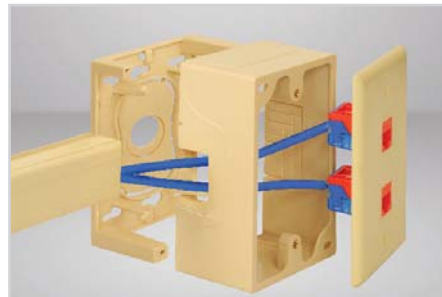
C



D



Description	Single
Magnet, 2 pcs, can be installed with mobile patch boxes	ICMAGBLOCK




B



C



D

\*Colors (xx):  
  
 WH (White)    IV (Ivory)    BK (Black)



110-Type Patch Panels	20, 22
Blank Patch Panels & Modular Patch Panels	21
Feed-Through Patch Panels	23
110 Wiring Blocks	24, 25
Telco Patch Panels	26
66 Wiring Blocks	27
Mounting Brackets	28



# 110-Style Patch Panels



24 Port	Single	6-Pack
CAT 6, 1 RMS [A]	ICMPP02460	ICMPP2460V
CAT 6A, 1 RMS [B]	ICMPP0246B	N/A
CAT 5e, 1 RMS	ICMPP0245E	ICMPP245EV
6P6C, USOC, 1 RMS	ICMPP024U6	N/A

48 Port	Single	6-Pack
CAT 6, 2 RMS	ICMPP04860	ICMPP4860V
CAT 6A, 2 RMS [C]	ICMPP0486B	N/A
CAT 5e, 2 RMS	ICMPP0485E	ICMPP485EV
6P6C, USOC, 2 RMS	ICMPP048U6	N/A



## Cable Management Bar

- Mounts on the rear of patch panels to support cable
- Does not work with CAT 6A panels

Description	Single
110-Style [D]	ICMPP25CMB

## Label Programming Specifications

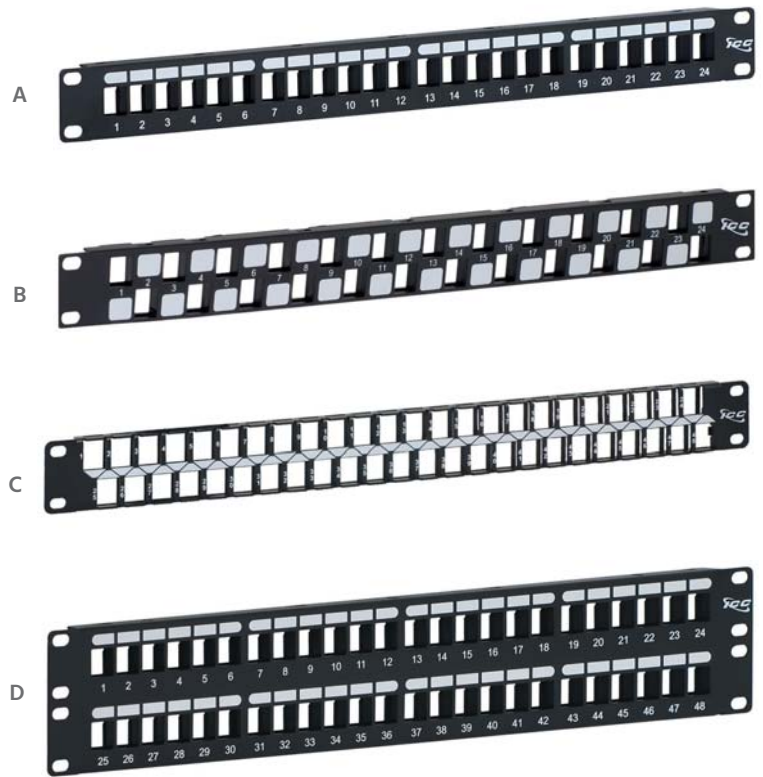


Center Port Spacing: 0.6"  
Tape Width: 3/8" (9mm)

# Modular Blank Patch Panels

- Configurable with modular connectors

24 Port	Single
HD, 1 RMS [A]	IC107BP241
EZ Staggered, 1 RMS [B]	IC107BE241
48 Port	Single
HD, 1 RMS [C]	IC107BP481
HD, 2 RMS [D]	IC107BP482



# CAT 6A Modular Blank Patch Panels

- Works with CAT 6A connectors

24 Port	Single
Blank, UTP, 1 RMS [E]	IC107PPU6A
Blank, FTP, 1 RMS [F]	IC107PPS6A



# CAT 6A Modular Patch Panels

- Comes with 24 keystone connectors

24 Port	Single
CAT 6A, UTP, 1 RMS [G]	ICMPP246AU
CAT 6A, FTP, 1 RMS [H]	ICMPP246AS





## 110-Style Wall Mount Patch Panels

- Two-piece design; patch panel with 89D mounting bracket

12 Ports	Single	6-Pack
CAT 6 [A]	ICMPP12V60	ICMPP1260V
CAT 5e	ICMPP12V5E	ICMPP125EV
6P6C, USOC	ICMPP012U6	N/A

A



## Front Access Zero-U Patch Panels

- Two-piece design; patch panel with cover

12 Ports	Single
CAT 6 [B]	ICMPP12F6E
CAT 5e	ICMPP12F5E

B



## Blank Wall Mount Patch Panels

- Two-piece design; patch panel with 89D mounting bracket

12 Ports	Single
HD [C]	IC107BP12V

8 Ports	Single
HD/EZ [D]	IC107BP8VB

C



D



## Clear Dust Caps

- Prevents dust and debris from entering ports

Description	10-Pack	100-Pack
Single port	ICACSDCICL	ICACSDCVCL



# Feed-Through Coupler Patch Panels

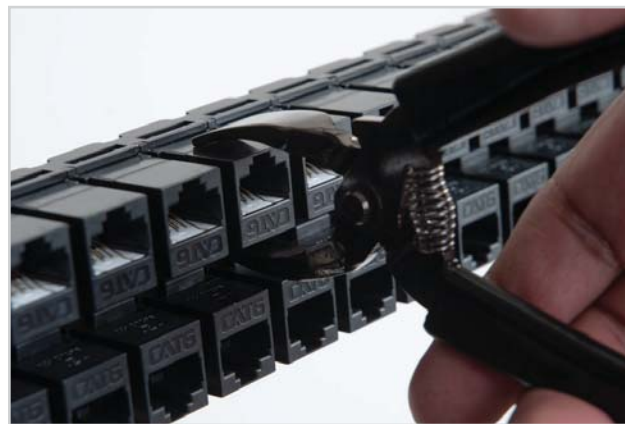


- Comes pre-assembled with category-rated couplers
- Connect patch cords on both sides of panel
- No punch-down termination needed
- Supports Power over Ethernet (PoE++) Type 4; up to 100 watts

24 Port	Single
CAT 6A, 1 RMS	ICMPP24CPA
CAT 6, 1 RMS <b>[A]</b>	ICMPP24CP6
CAT 5e, 1 RMS	ICMPP24CP5
48 Port	Single
CAT 6A, 2 RMS	ICMPP48CPA
CAT 6, 1 RMS <b>[B]</b>	ICMPP48C61
CAT 6, 2 RMS <b>[C]</b>	ICMPP48CP6
CAT 5e, 1 RMS	ICMPP48C51
CAT 5e, 2 RMS	ICMPP48CP5



The top and bottom rows have couplers oriented in opposite directions



ICC's Connector Removal Tool (ICACSP481) helps remove couplers

## 110 Wiring Block Kits

- Includes a wiring block with feet
- Includes 110 connecting blocks and labels

CAT 5e	Single
100-Pair	IC110W1004
300-Pair	IC110W3004
100-Pair, Hinged base <b>[A]</b>	IC110H1004

CAT 6	Single
96-Pair <b>[B]</b>	IC110WK966



## 110 Wiring Blocks

Description	Single
100-Pair with Feet	IC110WF100
300-Pair with Feet <b>[C]</b>	IC110WF300
100-Pair without Feet	IC110NF100
100-Pair, Hinged base	IC110WH100

Cable Managers	Single
With Feet	IC110CMBWF
Without Feet <b>[D]</b>	IC110CMBNF





# 110 Wiring Block Patch Panels



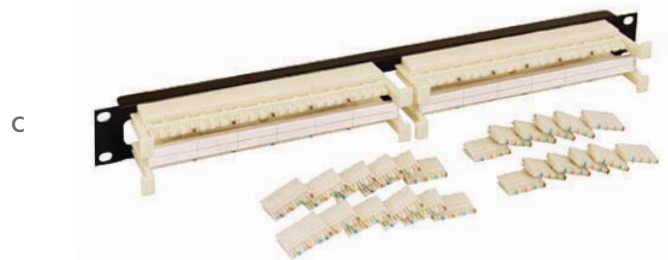
CAT 5e	Single
100-Pair <b>[A]</b>	IC110RM100
200-Pair	IC110RM200
Cable Manager <b>[B]</b>	IC110RMCMB



## 110 Wiring Block Patch Panel Kit

- Includes 110 connecting blocks and labels

CAT 6	Single
96-Pair <b>[C]</b>	IC110PRK61



## Accessories

110 Connecting Blocks	100-Packs
4-Pair <b>[D]</b>	IC110CB4PC
5-Pair <b>[E]</b>	IC110CB5PC



Other	Value-Packs
Label Holder, 6-Pack <b>[F]</b>	IC110LHLDR
Wire Cap, 50-Pack <b>[G]</b>	IC110TC450



Spools	10-Pack
Built-in wood screw <b>[H]</b>	ICACSWDS20
Without screw <b>[I]</b>	ICACSWDS10





# Voice Telco Patch Panels

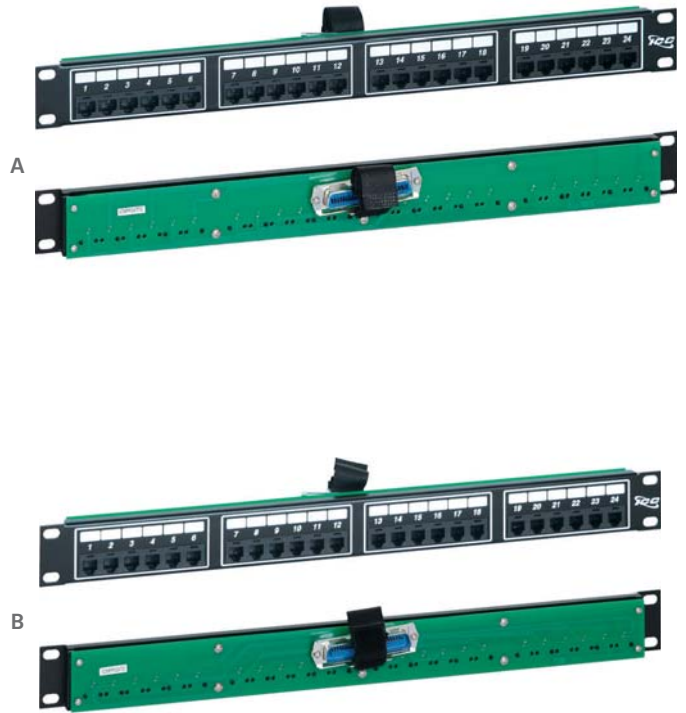


- RJ-21X 25-Pair (50-pin) Telco connector on the rear

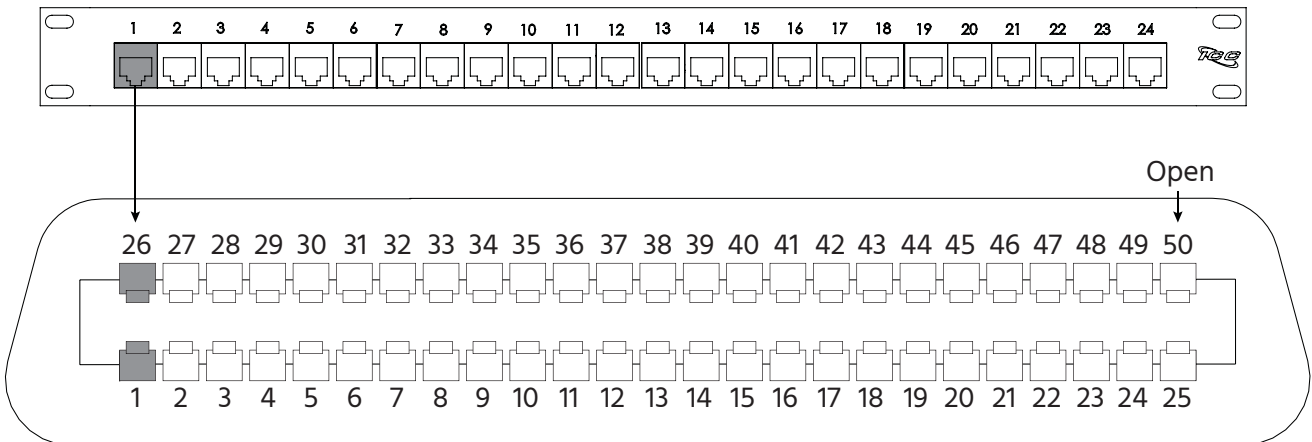
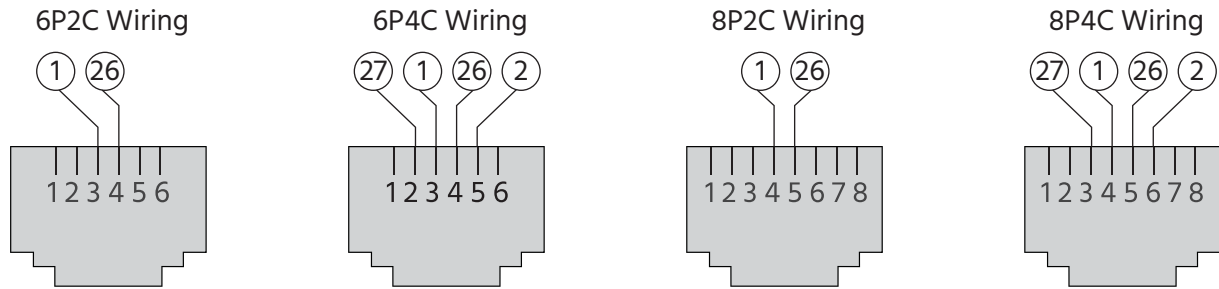
24 Port 1 RMS	Telco Gender	Active Pins	Single
8P4C USOC	2 male	4/5, 3/6	ICMPP24T4C
8P4C USOC	2 female	4/5, 3/6	ICMPP24TF4
8P2C USOC	1 male	4/5	ICMPP24T2C
8P2C USOC <b>[A]</b>	1 female	4/5	ICMPP24TF2
6P4C USOC	2 male	3/4, 2/5	ICMPP024T4
6P4C USOC	2 female	3/4, 2/5	ICMPPTF244
6P2C USOC <b>[B]</b>	1 male	3/4	ICMPP024T2
6P2C USOC	1 female	3/4	ICMPPTF242

48 Port 1 RMS	Telco Gender	Active Pins	Single
8P2C USOC	1 male	4/5	ICMPP48T2C
8P2C USOC	1 female	4/5	ICMPP48TF2
6P2C USOC	1 male	3/4	ICMPP048T2



PATCH PANELS AND CROSS-CONNECT







## 89B Mounting Brackets

- Dimensions: 10" H x 3.30" W x 1.90" D
- For mounting 66 wiring blocks

Description	Single	25-Pack
Bracket <b>[A]</b>	ICMB89B0WH	ICMB89BCWH

A



## 89D Mounting Bracket

- Dimensions: 10" H x 3.30" W x 1.90" D
- For mounting USOC vertical patch panels

Description	Single
Bracket <b>[B]</b>	ICMB89D0WH

B



## 89U Mounting Bracket

- Dimensions: 10" H x 3.30" W x 2.35" D
- For mounting vertical patch panels and 66 wiring blocks

Description	Single
Bracket <b>[C]</b>	ICMB89U0WH

C



## Accessories

Description	Single
Block Clear Cover <b>[D]</b>	IC066CV050

D

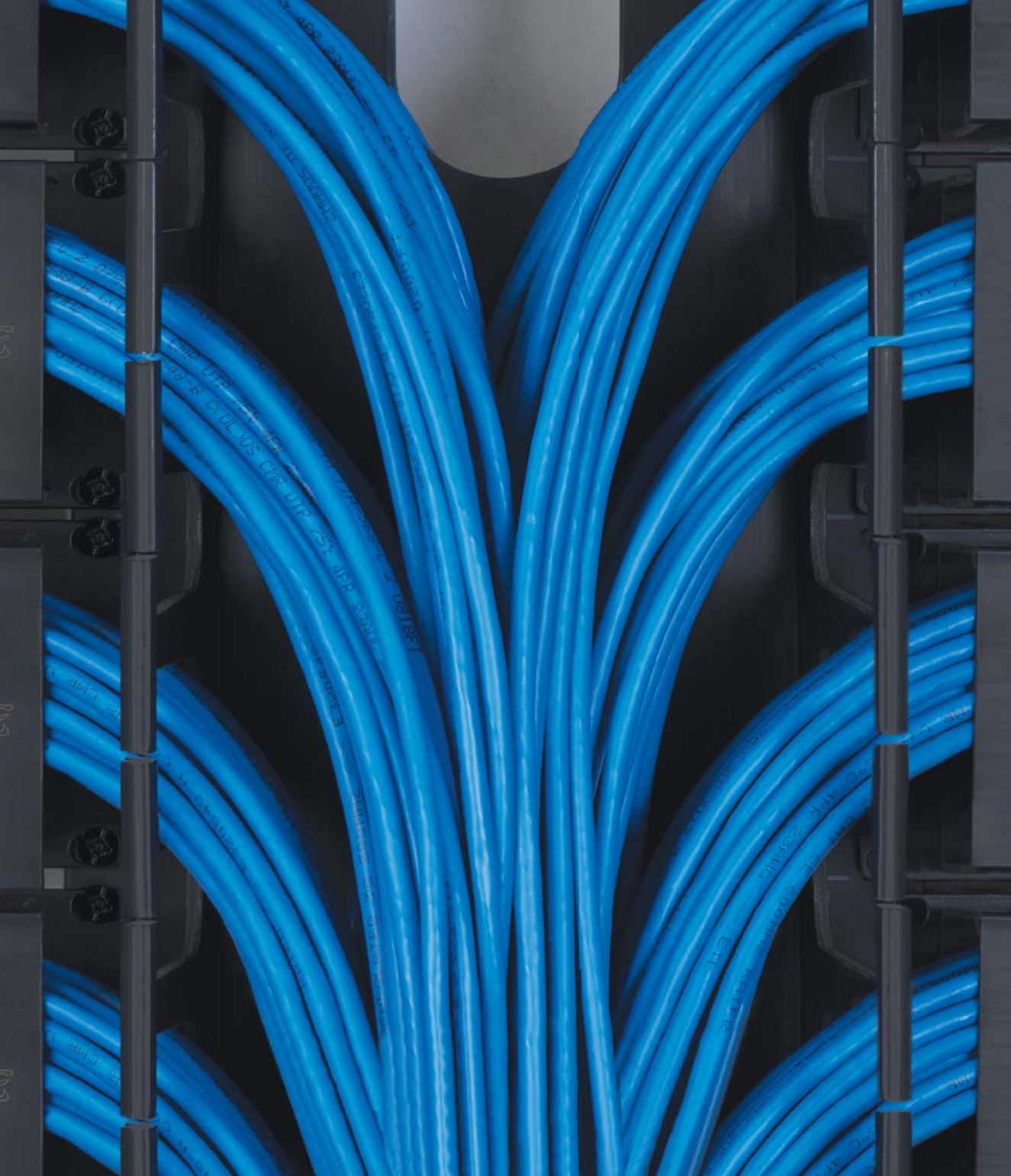


Description	100-Pack
Bridge Clips, 100-Pack <b>[E]</b>	IC066BRCLP

E



100 Pack



# Racks and Cable Management

Wall Mount Brackets	30
Wall Mount Racks	31
Floor Mount Racks	32
Cable Management	33-37
Shelves	38-39
Ladder Rack	40-42



## Wall Mount Hinged Brackets

- Up to 40 lb. capacity

Description	Single	2-Pack
1 RMS, 6" D [A]	ICCMShB1RS	ICCMShB1RC
2 RMS, 6" D	ICCMShB2RS	ICCMShB2RC
4 RMS, 6" D [B]	ICCMShB4RS	ICCMShB4RC



## Wall Mount EZ-Fold™ Brackets

- Up to 30 lb. capacity
- Patented

Description	Single
2 RMS, 6" D	ICCMSABR62
4 RMS, 6" D	ICCMSABR64
6 RMS, 6" D [C]	ICCMSABR66
8 RMS, 6" D	ICCMSABR68

Description	Single
2 RMS, 15" D [D]	ICCMSABRS2
4 RMS, 15" D	ICCMSABRS4
6 RMS, 15" D	ICCMSABRS6
8 RMS, 15" D	ICCMSABRS8



## EZ-Fold Bracket Covers

Description	2-Pack
15" D, top and bottom covers [E]	ICCMSABRSC





## Wall Mount Racks

- Up to 125 lb. capacity

Description	Single
8 RMS, 18" D <b>[A]</b>	ICCMSWMR08
15 RMS, 18" D <b>[B]</b>	ICCMSWMR15
30 RMS, 18" D	ICCMSWMR30

A



B



## Wall Mount Swing Frame Racks

- Up to 85 lb. capacity
- Frame swings out left or right

Description	Single
12 RMS, 18" D <b>[C]</b>	ICCMSSFR12
25 RMS, 18" D	ICCMSSFR25

C



## Wall Mount Utility Rack

- Up to 75 lb. capacity

Description	Single
5 RMS	ICCMSWMUR5



## Pilot Point Rack Screws

Description	25-Pack
#12-24 x 5/8"	ICACSS01BK



25 Pack





## 2-Post Distribution Racks

- Up to 750 lb. capacity

Description	Single
7' H, 45 RMS [A]	ICCMSR1984
6' H, 38 RMS	ICCMSR1972



## 4-Post Distribution Rack

- Adjustable frame from 27" to 32" depth
- Up to 1500 lb. capacity

Description	Single
7' H, 45 RMS [B]	ICCMSR4P84

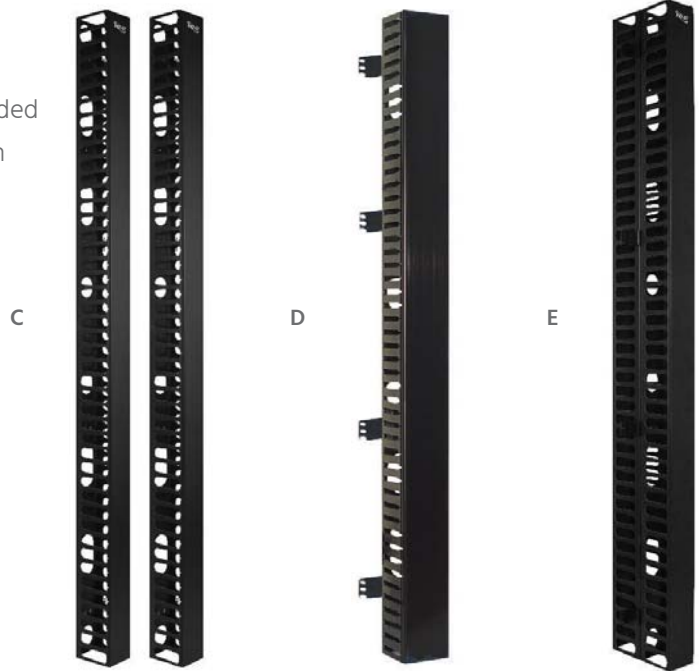
## Vertical Finger Duct

- Includes plastic cover
- Vertical finger ducts with Z-Brackets are recommended for horizontal finger duct brackets with 3-inch depth

Single-Sided	Single
2-Pack, Side or Center Mount, Flat Bracket 78" H x 6" W x 5" D [C]	ICCMSMA73
Side Mount, Flat Bracket 78" H x 4" W x 5" D [D]	ICCMSMA84
Side Mount, Z-Bend Bracket 78" H x 4" W x 5" D	ICCMSMA81

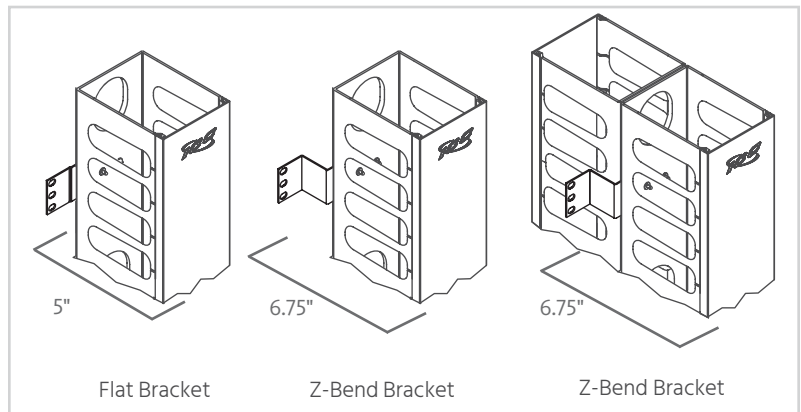
Double Sided	Single
Center Mount, Z-Bend Bracket 78" H x 4" W x 10" D	ICCMSMA82
Side Mount, Z-Bend Bracket 78" H x 4" W x 10" D [E]	ICCMSMA83



## Anchor Kit

- Secures rack to concrete

Description	4-Pack
3/8" anchor with mounting hardware	ICCMSRFLKT



# Vertical Metal Channels

- Includes plastic covers

Description	1 Set	2 Sets
Side or Center Mount, Flat Bracket 40" H x 6" W x 6" D	ICCMSC42BK	ICCMSC40BK



Adjustable Bracket and Front Latch

# Vertical Plastic Finger Ducts

- Includes plastic covers

Description	2 Sets
Side or Center Mount, Flat Bracket 35" H x 4" W x 5" D	ICCMSC30BK



Adjustable Bracket



2 Sets



Open

2 Sets

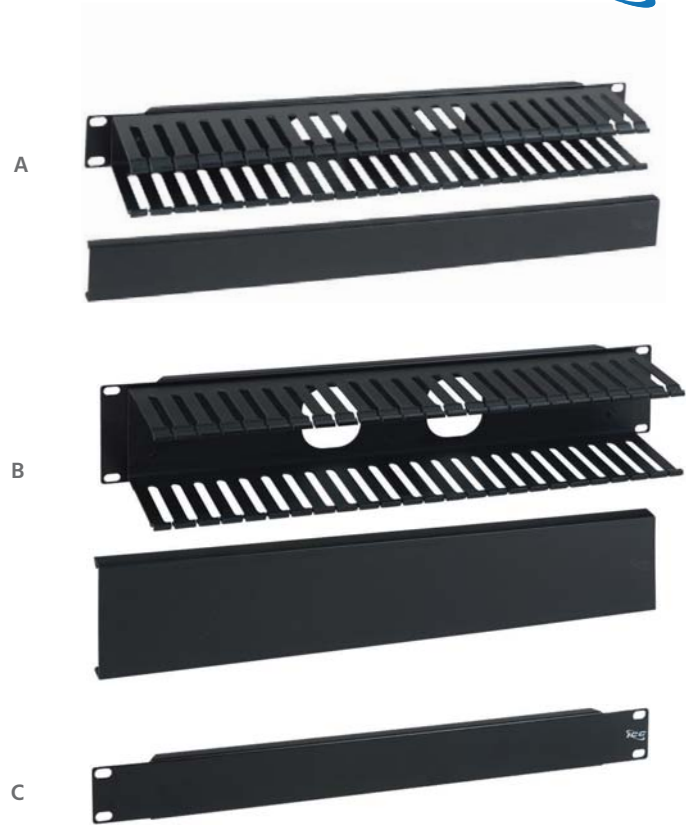


Open

## Single-Sided Finger Ducts



Description	3" Depth	5" Depth
1 RMS	ICCMSCMA41	ICCMSCMA15 <b>[A]</b>
1 RMS, 6-Pack	ICCMSCMAC1	N/A
2 RMS	ICCMSCMA42	ICCMSCMA25 <b>[B]</b>
2 RMS, 6-Pack	ICCMSCMAC2	N/A



## Metal Blank Panels

Description	Single	12-Pack
1 RMS <b>[C]</b>	ICCMSCMPB1	ICCMSCMPC1
2 RMS	ICCMSCMPB2	ICCMSCMPC2
3 RMS	ICCMSCMPB3	N/A
4 RMS <b>[D]</b>	ICCMSCMPB4	N/A



## Cable Management Bracket Panels

Description	6-Pack
Front, 3" D <b>[E]</b>	ICCMSFCMC3
Rear, 5" D <b>[F]</b>	ICCMSRCMC5



# Plastic Interbay Ring Panels



Description	Single	6-Pack
1 RMS [A]	ICCMSCMA51	ICCMSCMAV1
2 RMS [B]	ICCMSCMA52	ICCMSCMAV2



# Metal Vertical Ring Panels

Description	Single	6-Pack
1 RMS [C]	ICCMSCMPK1	ICCMSCMP61
2 RMS [D]	ICCMSCMPK2	ICCMSCMP62



# Metal Vertical and Horizontal Ring Panels

Description	Single
1 RMS [E]	ICCMSCMP31
2 RMS [F]	ICCMSCMP32



4"

2"

1-5/16"

3/4"

A



B



C



D



Description	Wall Mount [A]	Ceiling Mount [B]	Batwing [C]	Beam Clamp [D]
4" D	ICCMSJHK55	ICCMSJH955	ICCMSJHW55	ICCMSJHB55
2" D	ICCMSJHK44	ICCMSJH944	ICCMSJHW44	ICCMSJHB44
1-5/16" D	ICCMSJHK33	ICCMSJH933	ICCMSJHW33	ICCMSJHB33
3/4" D	ICCMSJHK22	ICCMSJH922	ICCMSJHW22	ICCMSJHB22

# Universal Vertical/Horizontal Plastic Ring



Description	Single	10-Pack
3" H x 3" W [A]	ICCMSCMPR7	ICCMSCMPV7



# Vertical and Horizontal Plastic Rings

Description	Single	10-Pack
1.25" W [B]	ICCMSCMPR5	ICCMSCMPV5
1.25" H [C]	ICCMSCMPR6	ICCMSCMPV6



# Vertical Metal Rings

Description	10-Pack
1.70" W [D]	ICCMSCMPT1
3" W	ICCMSCMPT2



10 Pack

# Metal "L" Bracket

Description	25-Pack
0.95" H x 6" W [E]	ICCMSCMPLC



25 Pack

# Wall Mount D-Rings

Description	Plastic 25-Pack	Metal 25-Pack	Plastic 100-Pack	Metal 100-Pack
2"	ICCMSDRPC2	ICCMSDRMC2	ICCMSDRP02 [F]	ICCMSDRM02 [G]
3"	ICCMSDRPC3	ICCMSDRMC3	ICCMSDRP03	ICCMSDRM03
5"	ICCMSDRPC5	ICCMSDRMC5	ICCMSDRP05	ICCMSDRM05



100 Pack



100 Pack

# Cable Radius Manager

Description	20-Pack
2.44" H x 3.6" W [H]	ICCMSRMU1C



20 Pack



## Solid Bottom Rack Shelves



- Up to 250 lb. capacity

Description	Single	2-Pack
10" D, 2 RMS, single-sided	ICCMSRSF10	ICCMSRSFC1
15" D, 3 RMS, single-sided <b>[A]</b>	ICCMSRSF15	ICCMSRSFC2
20" D, 2 RMS, double-sided <b>[B]</b>	ICCMSRDS20	ICCMSRDSC3
20" D, 3 RMS, double-sided <b>[C]</b>	ICCMSHDS20	N/A



## Solid Bottom Keyboard Shelf with Sliding Mouse Tray

- Up to 10 lb. capacity

Description	Single
10" D, 3 RMS	ICCMSRKSM1



## Vented Bottom Rack Shelves



- Up to 100 lb. capacity

Description	Single	2-Pack
10" D, 2 RMS, single-sided	ICCMSRSV10	ICCMSRSVC1
15" D, 3 RMS, single-sided <b>[A]</b>	ICCMSRSV15	ICCMSRSVC2
20" D, 2 RMS, double-sided <b>[B]</b>	ICCMSRDV20	ICCMSRDVC4
30" D, 3 RMS, double-sided	ICCMSRDV30	N/A

A



B



## Vented Bottom Wall Shelf

- Up to 125 lb. capacity

Description	2-Pack
17" D	ICCMSWMSV2

2 Pack



## The Difference Between Vented and Solid Shelves



Vented shelves provide airflow to ventilate mounted equipment

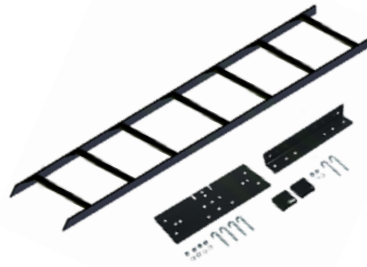


Solid shelves support heavier equipment

## Ladder Rack Kit (Straight)

- Runway, relay bracket, wall angle, and J-Bolts

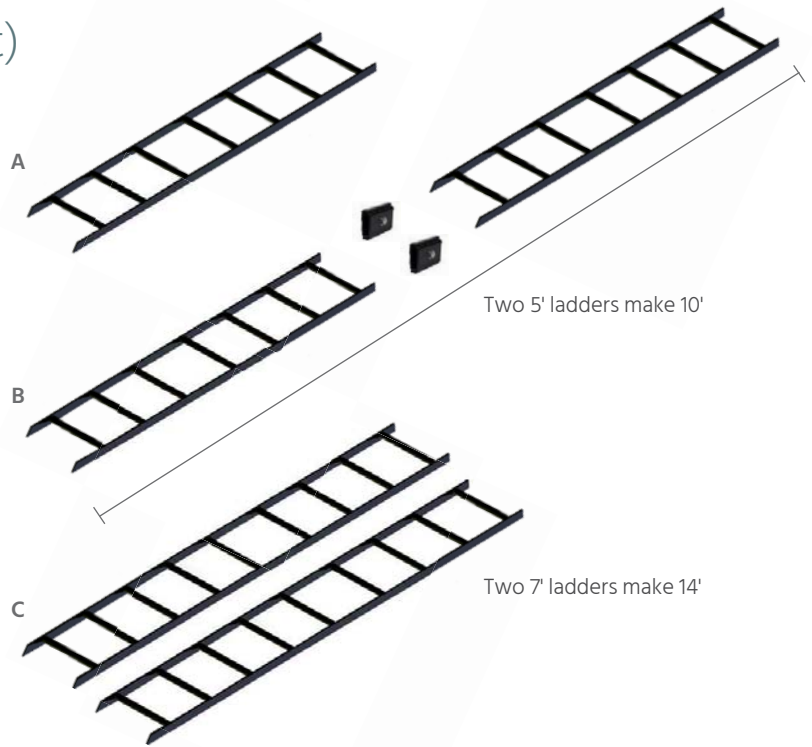
Description	Single
5'	ICCMCLRW05



## Ladder Rack Runway (Straight)

- 16 GA steel with a durable powder-coated finish
- 2-Pack of 5' with butt splice make 10'
- 2-Pack of 7' make 14'

Description	Single	2-Pack
5' [A]	ICCMCLST05	ICCMCLSTV5
5' with Butt Splice Kit [B]	N/A	ICCMCLSTW5
7' [C]	N/A	ICCMCLSTV7



## 90° Flat Turn

- Gradual sweeping bend

Description	Single
Horizontal Flat Turn [D]	ICCMCLFT90



## 90° Corner Turns

- Routes cable vertically

Description	Single
Vertical Inside Turn [E]	ICCMCLIR90
Vertical Outside Turn [F]	ICCMCLOR90



## Cable Radius Drop

- Maintains cable's bend radius at drop points
- Attach to the middle rungs or side rail

Description	2-Pack
-------------	--------

90-degree curve    ICCMSLRDB

2 Pack



## Wall Support Triangle

- Holds ladder rack to wall

Description	6-Pack
-------------	--------

Side rail support    ICCMSLTWS6

6 Pack



## Wall Support Bracket

- Holds ladder rack ends to wall

Description	2-Pack
-------------	--------

End support    ICCMSLAWS2

2 Pack



## Butt Splices

- Joins ladder rack ends together

Description	10-Pack
-------------	---------

Joint support    ICCMSLRBSK

10 Pack



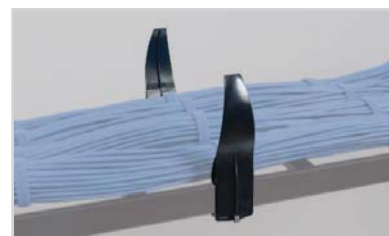
## Cable Retaining Post

- Prevents cable from falling off the side

Description	10-Pack
-------------	---------

Side rail support    ICCMSLRCP

10 Pack



## Floor Mount Feet

Description	2-Pack
-------------	--------

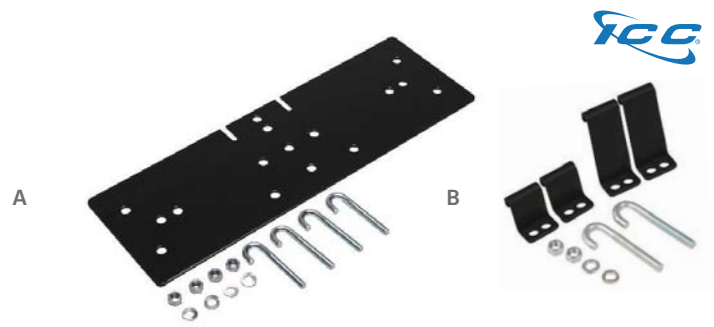
End support    ICCMSLMFF2

2 Pack



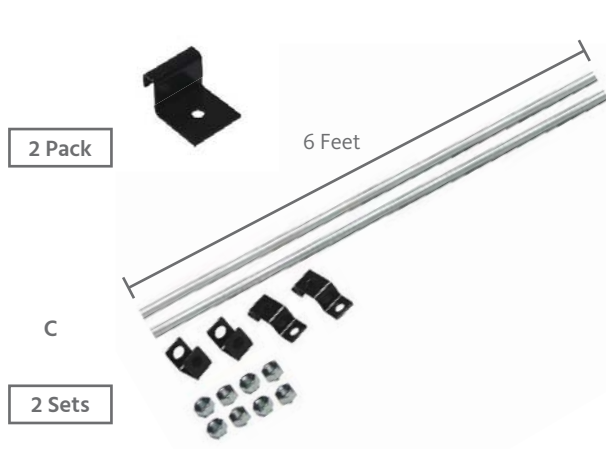
## Relay Rack Brackets

Description	Single
2-Post rack bracket [A]	ICCM SLRRBK
4-Post rack bracket [B]	ICCM SL4PBK



## Wall Bracket

Description	2-Pack
Side rail support	ICCM SLVWBK



## 6' Threaded Ceiling Rod

Description	2-Sets
Overhead support [C]	ICCM SLCMRK

## Swivel Butt Splice

- Allows ends to adjust to 180°

Description	2-Pack
Joint support	ICCM SLESSK



## Tee-Junction Splice

Description	2-Sets	6-Pack
Tee intersection joint support	ICCM SLTJSK	ICCM SLTJS6



## J-Bolt

Description	2-Sets
Secures ladder to bracket	ICCM SLJB01

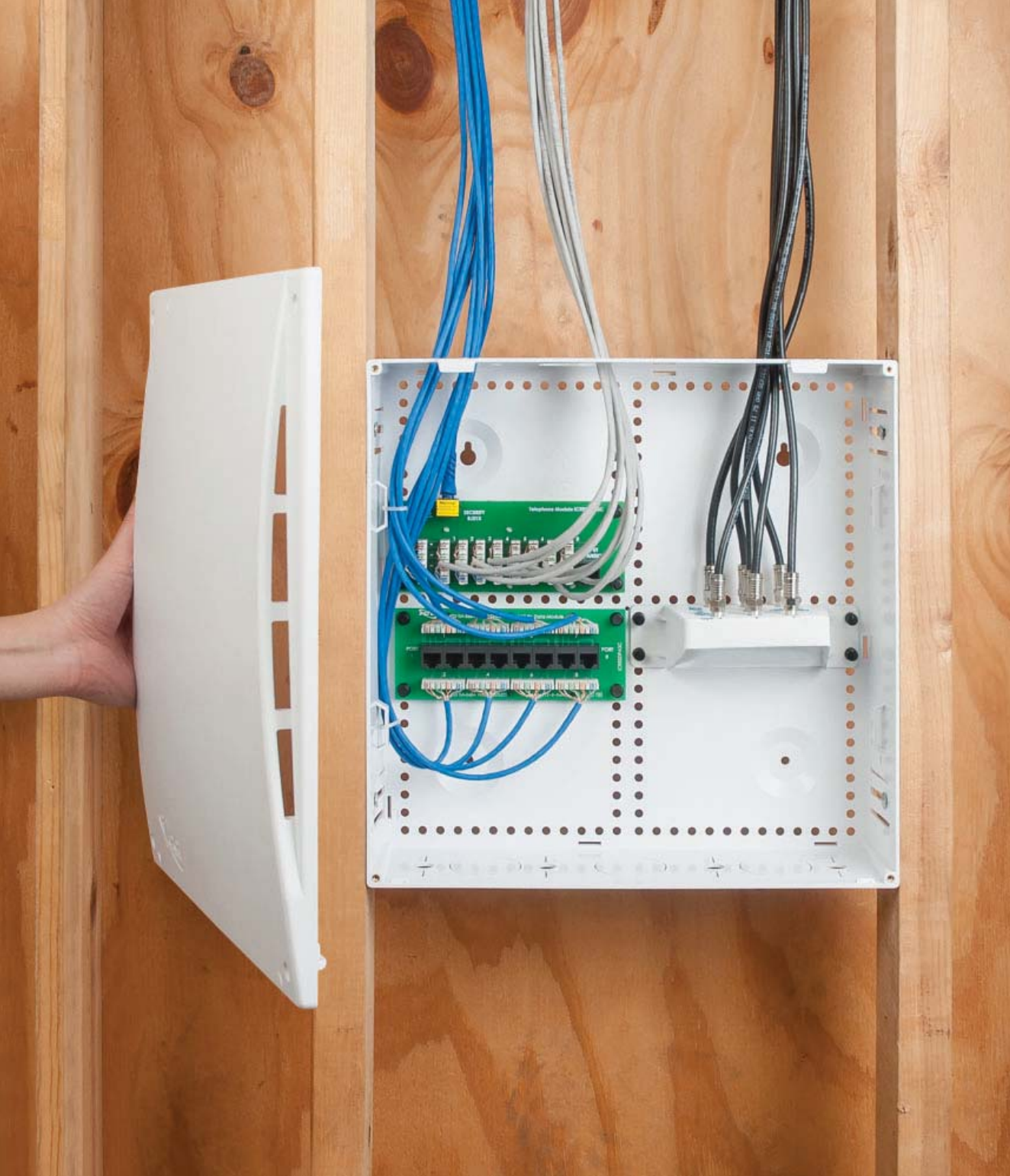


## Protective End Caps

Description	2-Pack
Rubber cover	ICCM SLPECK







# Residential Enclosures

Plastic Enclosures	44-45
Metal Enclosures	45
Connectivity Modules	46-47
Accessories	48



# Modular Plastic Residential Enclosures



- Modules are packaged separately so that they can be installed later
- ABS plastic for improved Wi-Fi signal range
- 0.1-inch gauge base to prevent cracking
- Complies with UL 1863, TIA-568-C, TIA-570-B, and TIA-607 standards
- UL® 94V-0 safety rated



Size	Model	Description	Single
14" [A]	K	8-Port CAT 6 data, 8-Port voice with RJ-31X jack, 1x6 video 2 GHz	ICRESDP14K
14"	W	8-Port CAT 6 data, 8-Port voice with RJ-31X jack	ICRESDP14W
14"	E	Enclosure with cover	ICRESDP14E
9" [B]	K	8-Port CAT 6 data, 8-Port voice with RJ-31X jack, 1x6 video 2 GHz	ICRESDC9PK
9"	W	8-Port CAT 6 data, 8-Port voice with RJ-31X jack	ICRESDC9PW
28" [C]	K	8-Port CAT 6 data, 8-Port voice with RJ-31X jack, 1x6 video 2 GHz	ICRESDP28K



Mud guard to protect from the rough-in phase

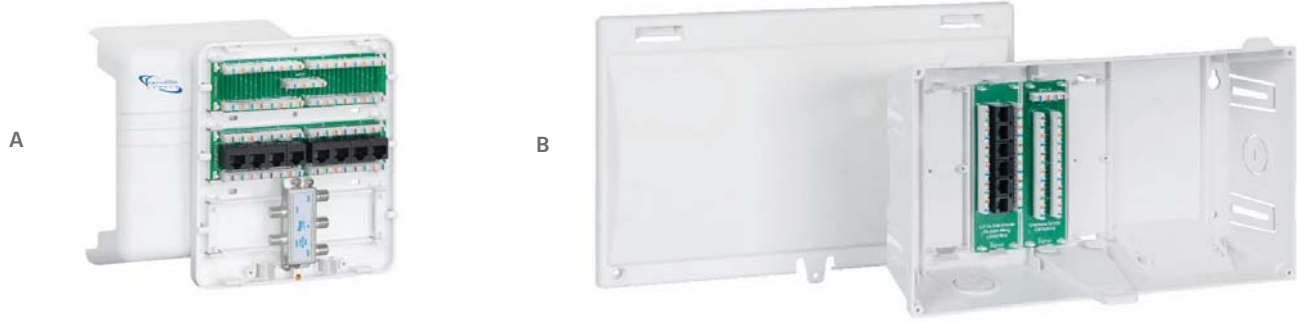


Universal hole pattern works with most electronic modules

# Pre-configured Plastic Residential Enclosures



- Modules are integrated for quick installation



Size	Model	Description	Single	6-Pack
Mini [A]	K	8-Port CAT 5e data, 8-Port voice, 1x4 video 2 GHz	ICRDSMMBK1*	N/A
Mini	W	6-Port CAT 5e data, 6-Port voice	ICRDSMMBW1*	N/A
8" [B]	W	6-Port CAT 5e data, 6-Port voice	ICRDSMMAW8*	ICRDSMMBW8

\*Modules are pre-configured into the enclosure

# Modular Metal Residential Enclosures

Size	Model	Description	Single
14" [C]	K	8-Port CAT 6 data, 8-Port voice with RJ-31X jack, 1x6 video 2 GHz	ICRESDC14K
14"	W	8-Port CAT 6 data, 8-Port voice with RJ-31X jack	ICRESDC14W
21"	K	8-Port CAT 6 data, 8-Port voice with RJ-31X jack, 1x6 video 2 GHz	ICRESDC21K
21"	E	Enclosure with door	ICRESDC21E
28"	K	8-Port CAT 6 data, 8-Port voice with RJ-31X jack, 1x6 video 2 GHz	ICRESDC28K
28"	E	Enclosure with door	ICRESDC28E



## CAT 6 Modules

- 8 Ports, 110-type IDC

Description	Single	10-Pack
PCB Board <b>[A]</b>	ICRESDPB3C	ICRESDPB3D
PCB Board, steel cover <b>[B]</b>	ICRESDPB1C	N/A

A



B



## CAT 5e Modules

- 8 Ports, 110-type IDC

Description	Single	10-Pack
PCB Board <b>[C]</b>	ICRESDBA3C	ICRESDBA3D
PCB Board, steel cover <b>[D]</b>	ICRESDBA1C	N/A

C



D



## Voice Modules

- 8 Ports bridged IDC; built-in RJ-31X and expansion jacks

Description	Single	10-Pack
PCB Board <b>[E]</b>	ICRESVPA3C	ICRESVPA3D
PCB Board, steel cover <b>[F]</b>	ICRESVPA1C	N/A

E



F



## Expansion Modules

- 8 Ports bridged IDC; built-in expansion jack
- Includes a 9" 8P8C flat patch cord

Description	Single
PCB Board <b>[G]</b>	ICRESVPB3C
PCB Board, steel cover <b>[H]</b>	ICRESVPB1C

G



H



## Video Splitters

- Video supports 2 GHz, 5~2300 MHz bandwidth
- Voice supports up to 4 phone lines to 8 locations

Description	Video	Video + 8-Port Voice
1 x 4	ICRESAV42L [A]	ICRES8V42S
1 x 6	ICRESAV62L [B]	ICRES8V62S [D]
1 x 6, 10-Pack	ICRESAV62V	N/A
1 x 8	ICRESAV82L [C]	ICRES8V82S

A



B



C



D



## Modules With Hook-and-Loop Adhesive Mounting Strips

- Built with rear hook-and-loop adhesive strips to stick on flat surfaces

Description	Single	10-Pack
8-Port CAT 6 data [E]	ICRESDPB2U	ICRESDPB2W
8-Port CAT 5e data [F]	ICRESDPA2U	ICRESDPA2W
8-Port voice with an RJ-31X jack [G]	ICRESVPA2U	ICRESVPA2W

E



F



G



## Patch Panels

- Configurable with voice, data, and video connectors

Description	Single
6 HD Ports [H]	ICRESBMP06
4 EZ® Ports	ICRESBMP04

H



## Metal Replacement Doors and Trim



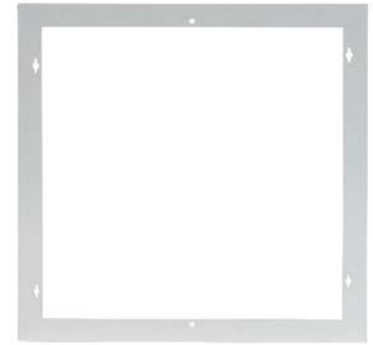
- Trim conceals uneven drywall cuts

Description	Single	10-Pack
14" Door <b>[A]</b>	ICRESDR14H	N/A
14" Trim <b>[B]</b>	N/A	ICRESDR14T
21" Door	ICRESDR21H	N/A
28" Door	ICRESDR28H	N/A

A



B



## Electronics Bracket

Description	Single
Metal bracket with hook and loop straps	ICRESDCBUM



## Cable Management Cover

Description	Single
Metal cover	ICRESCMC06



## Protective Grommets

Description	10-Pack
Plastic <b>[C]</b>	ICRESDCAC3
Rubber	ICRDSDCAC2

C



10 Pack

## Door Lock and Keys

- Install on 14", 21", and 28" metal doors

Description	Single
Lock and two keys	ICRDSDC2LK







# Premise Cables

CMR Bulk Cable	50
CMP Bulk Cable	51



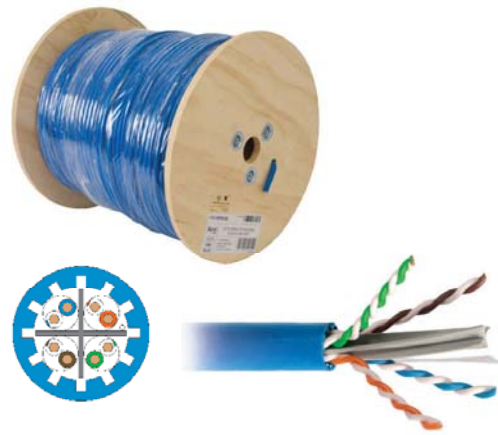
## CAT 6A CMR 10G 650 MHz Cable



- TAA compliant

Description	Weight	Length	Size	SKU
UTP Riser	50 lbs.	1000'	23 AWG	ICCABR6Axx* 

Description	Weight	Length	Size	SKU
FTP Riser	46 lbs.	1000'	23 AWG	ICCABR6FBL 



## CAT 6e CMR UTP 600 MHz Cable

Description	Weight	Length	Size	SKU
UTP Riser	29 lbs.	1000'	23 AWG	ICCABR6Exx* 



## CAT 6 CMR UTP 500 MHz Cable

Description	Weight	Length	Size	SKU
UTP Riser	27 lbs.	1000'	23 AWG	ICCABR6Vxx* 



## CAT 5e CMR UTP 350 MHz Cable

Description	Weight	Length	Size	SKU
UTP Riser	22 lbs.	1000'	24 AWG	ICCABR5Exx* 



NOTE: Cable must be stored above 32°F (0°C) for 48 hours before installation. The installation environment must be at or above 32 F (0°C).

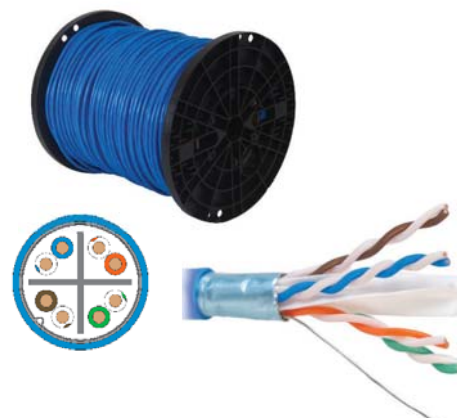
Colors (xx)\*:

BL (Blue)	WH (White)	BK (Black)	YL (Yellow)	GN (Green)	GY (Gray)

## CAT 6A CMP 10G 650 MHz Cable

• TAA compliant

Description	Weight	Length	Size	SKU	
UTP Plenum	54 lbs.	1000'	23 AWG	ICCABP6Axx*	(P)
UTP Plenum	54 lbs.	1000'	23 AWG	ICCABT6Axx*	(T)
Description	Weight	Length	Size	SKU	
FTP Plenum	51 lbs.	1000'	23 AWG	ICCABP6FBL	(P)
FTP Plenum	51 lbs.	1000'	23 AWG	ICCABT6FBL	(T)



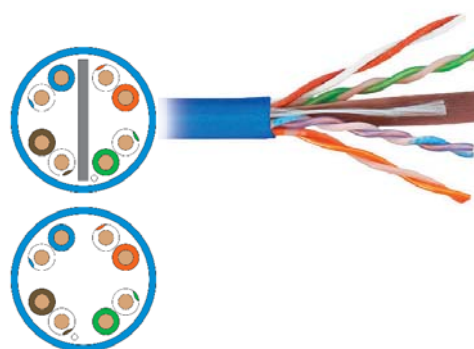
## CAT 6e CMP UTP 600 MHz Cable

Description	Weight	Length	Size	SKU	
UTP Plenum	31 lbs.	1000'	23 AWG	ICCABP6Exx*	(P)
UTP Plenum	27 lbs.	1000'	23 AWG	ICCABT6Exx*	(T)



## CAT 6 CMP UTP 500 MHz Cable

Description	Weight	Length	Size	SKU	
UTP Plenum	27 lbs.	1000'	23 AWG	ICCABP6Vxx*	(P)
UTP Plenum	27 lbs.	1000'	23 AWG	ICCABT6Vxx*	(T)



## CAT 5e CMP UTP 350 MHz Cable

Description	Weight	Length	Size	SKU	
UTP Plenum	22 lbs.	1000'	24 AWG	ICCABP5Exx*	(P)
UTP Plenum	22 lbs.	1000'	24 AWG	ICCABT5Exx*	(T)



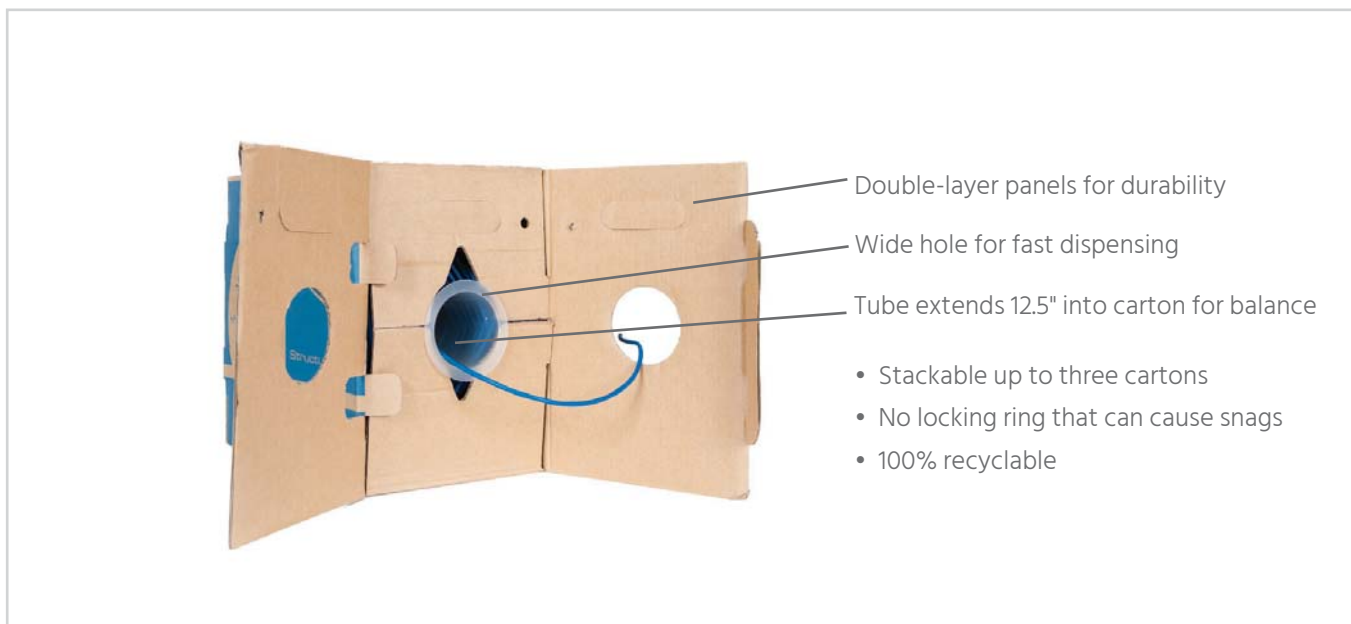
Colors (xx)\*:

BL (Blue)	WH (White)	YL (Yellow)	GN (Green)	GY (Gray)

NOTE: Cable must be stored above 32°F (0°C) for 48 hours before installation. The installation environment must be at or above 32 F (0°C).

(P) = United States  
(T) = Taiwan, TAA compliant

# REELEX II®



- Double-layer panels for durability
- Wide hole for fast dispensing
- Tube extends 12.5" into carton for balance
- Stackable up to three cartons
- No locking ring that can cause snags
- 100% recyclable



**REELEX II®  
Carton**  
Reinforced handles  
and panels



**PoE++  
Compliant**  
Made with pure solid  
copper conductors



**REELEX II®  
Coiling**  
Figure-eight winding  
ensures twist cancels out



**Footage  
Markings**  
Sequential footage to  
track usage easily



**3.5" Payout**  
Pulls up to 30% faster with  
no overruns



**UL® Mark**  
Certified holographic seal  
for authenticity

**NOTE:**  
Do not push cables back into the Reellex carton.  
Do not toss the carton with cable.

Cable must be stored above 32°F (0°C) for 48 hours before installation. The installation environment must be at or above 32 F (0°C).



## Cords and Cable Assemblies

Patch Cords	54-56
Telco Cables	57
Cable Ties	58
Modular Plugs	58



## CAT 6A Patch Cords

- Unshielded Foiled Twisted Pair (U/FTP) for shielded applications
- Wired to T568B standards

Description	Single	10-Pack
1-Foot	N/A	ICPCSX01xx*
3-Foot	ICPCSG03xx*	ICPCSX03xx*
5-Foot	ICPCSG05xx*	ICPCSX05xx*
7-Foot	ICPCSG07xx*	ICPCSX07xx*
10-Foot	ICPCSG10xx*	ICPCSX10xx*
15-Foot	ICPCSG15xx*	N/A
25-Foot	ICPCSG25xx*	N/A

\*Colors (xx):

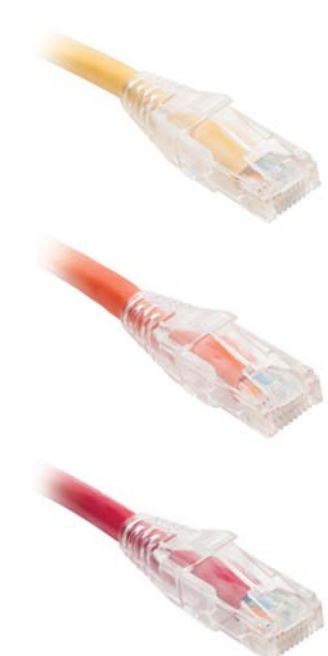


## CAT 6 Patch Cords With Clear Boots

- Wired to T568B standards

Description	Single	10-Pack	25-Pack Blue
1-Foot	ICPCST01xx*	ICPCSW01xx*	ICPCSF01BL
3-Foot	ICPCST03xx*	ICPCSW03xx*	ICPCSF03BL
5-Foot	ICPCST05xx*	ICPCSW05xx*	ICPCSF05BL
7-Foot	ICPCST07xx*	ICPCSW07xx*	ICPCSF07BL
10-Foot	ICPCST10xx*	ICPCSW10xx*	ICPCSF10BL
14-Foot	ICPCST14xx*	N/A	N/A
25-Foot	ICPCST25xx*	N/A	N/A

\*Colors (xx):



# CAT 6 Slim Patch Cords With Clear Boots

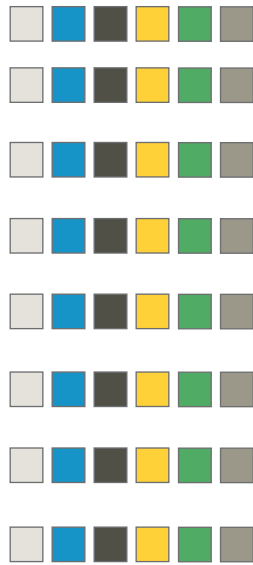


- The diameter of the cable is 36% thinner than standard CAT 6 cables

Description	Single	10-Pack	25-Pack Blue
1-Foot	ICPCSH01xx*	ICPCSY01xx*	ICPCSN01BL
3-Foot	ICPCSH03xx*	ICPCSY03xx*	ICPCSN03BL
5-Foot	ICPCSH05xx*	ICPCSY05xx*	ICPCSN05BL
7-Foot	ICPCSH07xx*	ICPCSY07xx*	ICPCSN07BL
10-Foot	ICPCSH10xx*	ICPCSY10xx*	ICPCSN10BL
15-Foot	ICPCSH15xx*	N/A	N/A
20-Foot	ICPCSH20xx*	N/A	N/A

\*Colors (xx):

WH BL BK YL GN GY



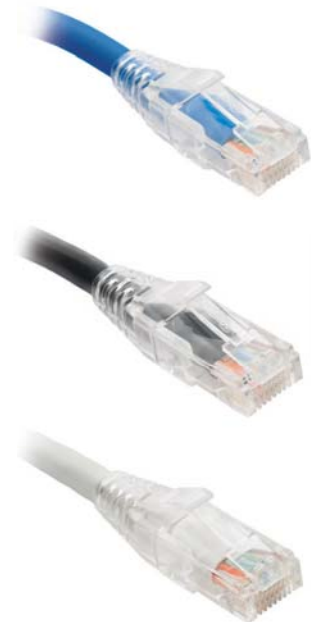
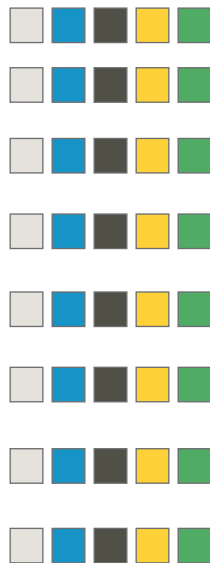
# CAT 5e Patch Cords With Clear Boots

- Wired to T568B standards

Description	Single	10-Pack	25-Pack Blue
1-Foot	ICPCSP01xx*	ICPCSV01xx*	ICPCSM01BL
3-Foot	ICPCSP03xx*	ICPCSV03xx*	ICPCSM03BL
5-Foot	ICPCSP05xx*	ICPCSV05xx*	ICPCSM05BL
7-Foot	ICPCSP07xx*	ICPCSV07xx*	ICPCSM07BL
10-Foot	ICPCSP10xx*	ICPCSV10xx*	ICPCSM10BL
14-Foot	ICPCSP14xx*	N/A	N/A
25-Foot	ICPCSP25xx*	N/A	N/A

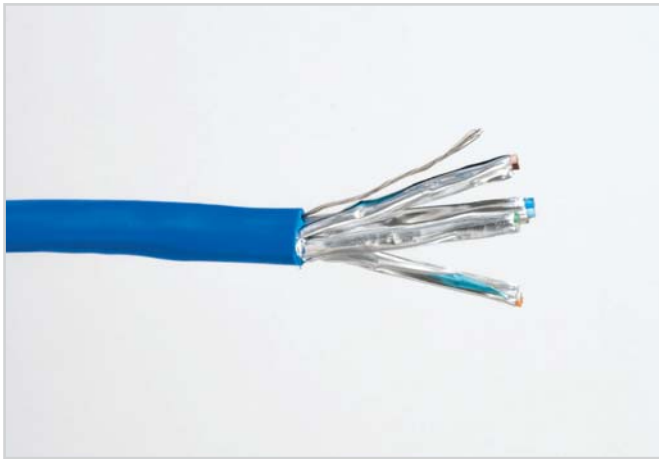
\*Colors (xx):

WH BL BK YL GN

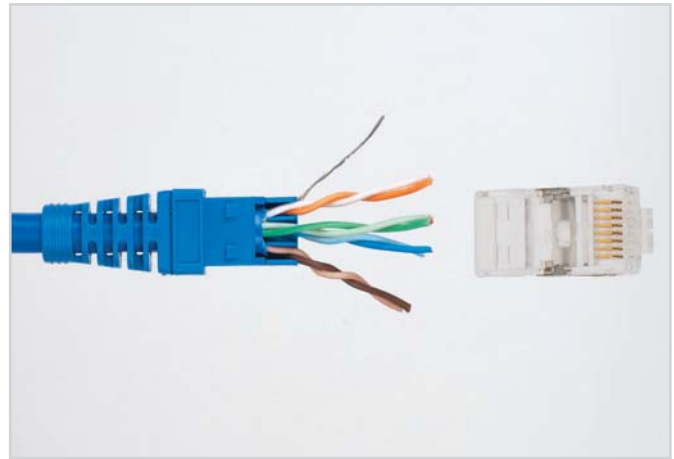




# CAT 6A Patch Cords



Foiled twisted pairs for protection from Alien Crosstalk



Metal shielded plug and split pairs for enhanced crosstalk cancelation

CORDS AND CABLE ASSEMBLIES

## CAT 6 Patch Cords vs. CAT 6 Slim Patch Cords



Patch Cord vs. Slim Patch Cord

Outside Diameter: Standard 0.236" vs. Slim 0.149"



Flexible

Slim patch cords use 38% less space

# Telco Cables

- Made with 25-Pair RJ-21X IDC connectors

Description	Single
Male to Male	ICPCSTMMzz**
Female to Female	ICPCSTFFzz**
Female to Male	ICPCSTFMzz**
Male to Blunt [A]	ICPCSTMBzz**
Female to Blunt [B]	ICPCSTFBzz**

\*\*Lengths (zz)= 05', 10', 15', and 25'



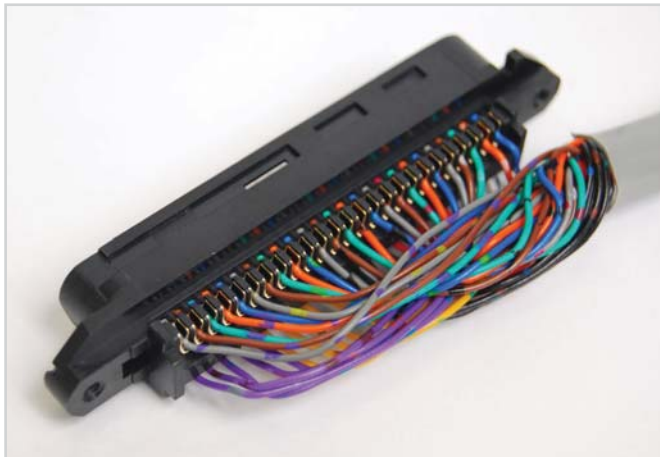
A (Male)



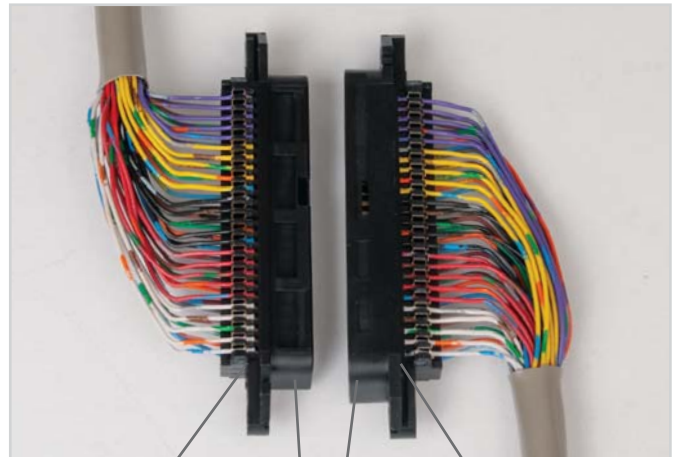
B (Female)



Solderless joints, terminated IDC







Inside view of Telco Connector with IDC Termination

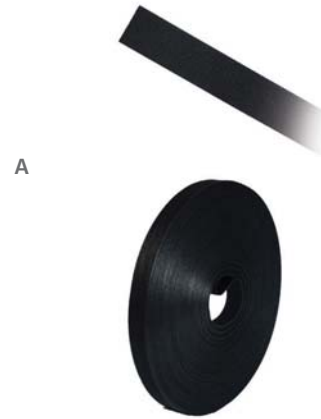


Female Pin 1 Male

## Hook and Loop Cable Tie Tape

- Continuous roll, cut to desired length

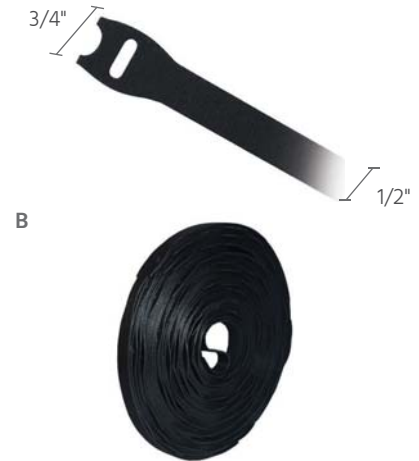
Description	Single Roll	10-Rolls
Economy hook and loop tape, 75' per roll, 0.5" W	ICACSQ75BK 	ICACSQVKBK 
Standard hook and loop tape, 75' per roll, 0.75" W [A]	ICACSV75xx*  	N/A



## Hook and Loop Cable Tie Strap

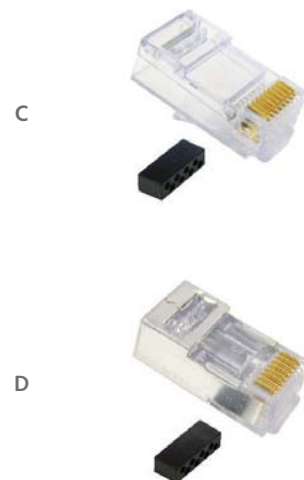
- Individually perforated
- Economy straps are made from a thin material offering a low-cost cable management solution
- Standard straps are made from a thick material for heavy-duty applications

Description	Single Roll
Economy hook and loop pre-cut straps, 112-Pieces, 8" L, 0.5" W [B]	ICACSQB8BK 
Standard hook and loop pre-cut straps, 100-Pieces, 8" L, 0.5" W	ICACSVB8BK 
Standard hook and loop pre-cut straps, 100-Pieces, 12" L, 0.5" W	ICACSVBTBK 

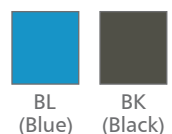


## Modular Plugs

Description	Entry	Cable	AWG	100-Pack
CAT 6 with loading bar [C]	Oval	Solid/Stranded	23~24	ICMP8P8C6E
CAT 6/5e Shielded with loading bar [D]	Oval	Solid/Stranded	23~24	ICMP8P8C6S
CAT 5e with loading bar	Oval	Stranded	24~26	ICMP8P8C5E
8P8C	Oval	Solid	24~28	ICMP8P8SRD
8P8C	Oval	Stranded	24~28	ICMP8P8CRD
8P8C	Flat	Stranded	24~28	ICMP8P8CFT



\*Colors (xx):





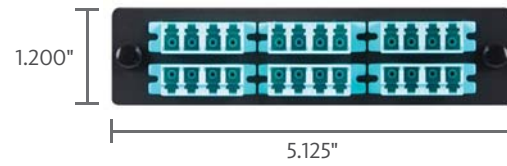
# Fiber Optic Systems

Enclosures	60-61
Adapter Panels	62-63
Patch Panels	62, 63, 65
MPO/MTP Cassettes	64-65
Patch Cords	65-66

# Classic Enclosures



- LGX® compatible with many industry-standard platforms
- Can fit up to 72 fibers in one rack mount space



Rack Mount	Maximum Capacity				Single
	Fibers (Using LC)	Adapter Panels (LGX)	Splice Trays		
1 RMS [A]	72	3	2		ICFORE31RM
2 RMS [B]	144	6	3		ICFORE62RM
4 RMS	288	12	5		ICFORET4RM

- Removable front and rear covers and slide-out tray
- Includes cable management spools and hook-and-loop ties



Wall Mount	Maximum Capacity				Single
	Fibers (Using LC)	Adapter Panels (LGX)	Splice Trays		
Door with padlock option [C]	48	2	3		ICFODE21WM
Door with lock and key [D]	96	4	3		ICFODE41WM

- Built-in cable management spools and rubber grommets

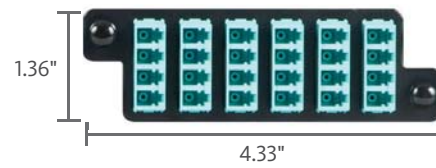




# HD Enclosures



- Works with HD adapter panels and cassettes with staggered push pins
- Can fit up to 96 fibers in one rack mount space



Rack Mount	Maximum Capacity			
	Fibers (Using LC)	Adapter Panels (HD)	Splice Trays	Single
1 RMS [A]	96	4	2	ICFORE41RM
2 RMS [B]	192	8	3	ICFORE82RM



- Removable front and rear covers and slide-out tray
- Includes cable management spools and hook-and-loop-ties

Wall Mount	Maximum Capacity			
	Fibers (Using LC)	Adapter Panels (HD)	Splice Trays	Single
Door with padlock option [C]	48	2	3	ICFODE21WH
Door with lock and key [D]	96	4	3	ICFODE41WH



- Built-in cable management spools and rubber grommets



## Classic Patch Panel Bracket



Blank	Slots	Single
1 RMS	3	ICFORPP1RM



## Classic Adapter Panels

LC-LC	24-Fiber	12-Fiber
Multimode, aqua	ICFOPL161G <b>[A]</b>	ICFOPL16BG <b>[B]</b>



Singlemode, blue	ICFOPL1619	ICFOPL16BK
------------------	------------	------------



Multimode, beige	ICFOPL1615	ICFOPL16B5
------------------	------------	------------

SC-SC	12-Fiber	6-Fiber
Multimode, aqua	ICFOPC161G <b>[C]</b>	N/A



Singlemode, blue	ICFOPC26BK	ICFOPS26BK <b>[D]</b>
------------------	------------	-----------------------



Multimode, beige	ICFOPC16BK	ICFOPS16BK
------------------	------------	------------

ST-ST	6-Fiber
Singlemode, blue <b>[E]</b>	ICFOPT26BK



Multimode, beige	ICFOPT16BK
------------------	------------

Blank	
Blank panel	ICFOPB00BK



## Accessories

Fiber Optic	Kit
12-fiber splice tray <b>[F]</b>	ICFOSKFM12
24-fiber stackable splice tray	ICFOSTFP24



# HD Patch Panel Bracket



Blank	Slots	Single
1 RMS	4	ICFORPP1RH



# HD Adapter Panels

LC-LC	24-Fiber
Multimode, aqua <b>[A]</b>	ICFOPL16HG
Singlemode, blue <b>[B]</b>	ICFOPL16H9
Multimode, beige	ICFOPL16H5
SC-SC	12-Fiber
Multimode, aqua <b>[C]</b>	ICFOPC16HG
Singlemode, blue <b>[D]</b>	ICFOPC16H9
Multimode, beige	ICFOPC16H5
Blank	
Blank panel	ICFOPB00HK



# HD Patch Panel

LC-LC	96-Fiber
Multimode, aqua, 1 RMS	ICFP96ML1G



# Accessories

Fiber Optic	20-Pack
1 RMS, rubber grommet, 38.10mm <b>[E]</b>	ICFORECAC3
2 RMS, rubber grommet, 25.4mm	ICFORECAC2



20 Pack

# Classic MPO Metal Cassettes



LC-MPO (MTP compatible)	2x12 Fiber MPO	1x12 Fiber MPO
OM3, Multimode, aqua	ICFC24ML1G <b>[A]</b>	ICFC12ML1G
OM2, Multimode, beige	ICFC24ML50	ICFC12ML50
OM1, Multimode, beige	ICFC24MLD6	ICFC12MLD6 <b>[B]</b>
OS2, Singlemode, blue	ICFC24SLD9	ICFC12SLD9

SC-MPO	1x12 Fiber MPO
OM3, Multimode, aqua <b>[C]</b>	ICFC12MS1G
OM2, Multimode, beige	ICFC12MS50
OM1, Multimode, beige	ICFC12MSD6
OS2, Singlemode, blue	ICFC12SSD9

# HD MPO Metal Cassettes

LC-MPO	2x12 Fiber MPO
OM3, Multimode, aqua <b>[D]</b>	ICFC24MLHG
OM2, Multimode, beige	ICFC24MLH5
OM1, Multimode, beige	ICFC24MLH6
OS2, Singlemode, blue	ICFC24SLH9

SC-MPO	1x12 Fiber MPO
OM3, Multimode, aqua <b>[E]</b>	ICFC12MCHG
OM2, Multimode, beige	ICFC12MCH5
OM1, Multimode, beige	ICFC12MCH6
OS2, Singlemode, blue	ICFC12SCH9



# Plug and Play MPO Plastic Cassettes



LC-MPO (MTP compatible)	2x12 Fiber MPO
OM3, Multimode, aqua <b>[A]</b>	ICFC24MLPG
OM2, Multimode, beige	ICFC24MLP5
OM1, Multimode, beige	ICFC24MLP6
OS2, Singlemode, blue	ICFC24SLP9

A



SC-MPO	1x12 Fiber MPO
OM3, Multimode, aqua	ICFC12MSPG
OM2, Multimode, beige <b>[B]</b>	ICFC12MSP5
OM1, Multimode, beige	ICFC12MSP6
OS2, Singlemode, blue	ICFC12SSP9

B



# Plug and Play Patch Panel Bracket

Blank Panel	Slots
1 RMS, 19" width	IC107PPC04



# MTP® Patch Cords, OFNP

Fiber Type	12 Fibers
OM3, Multimode Type A (1 to 1) (female)	ICFOJATGzz* <b>[C]</b>
OM3, Multimode Type B (1 to 12) (female)	ICFOJARGzz**
OS2, Singlemode Type A (1 to 1) (female)	ICFOJATSzz* <b>[D]</b>
OS2, Singlemode Type B (1 to 12) (female)	ICFOJARSzz**
OM4, Multimode Type A (1 to 1) (female)	ICFOJATQzz**
OM4, Multimode Type B (1 to 12) (female)	ICFOJARQzz*

C



D



\*Lengths (zz) = 05, 10, 15, 20, 30, 40, 50, 60, 70, 80, 90, and 100 meters

\*\*Lengths (zz)= 05, 10, 15, and 20 meters

# Duplex Patch Cords, OFNR



Fiber Type	OM3 50/125	OM2 50/125	OM1 62.5/125	OS2 9/125
LC to LC, 1.2" min. Bend Radius	ICFOJ1G7zz* <b>[A]</b>	ICFOJ1M7zz*	ICFOJ1M3zz*	ICFOJ1M5zz* <b>[B]</b>
LC to SC, 1.2" min. Bend Radius	ICFOJ2G7zz*	ICFOJ2M7zz*	ICFOJ2M3zz*	ICFOJ2M5zz*
LC to ST, 1.2" min. Bend Radius	N/A	ICFOJ3M7zz*	ICFOJ3M3zz*	ICFOJ3M5zz*
SC to SC, 1.2" min. Bend Radius	ICFOJ8G7zz* <b>[C]</b>	ICFOJ8C7zz*	ICFOJ8C3zz*	ICFOJ8C5zz*
SC to ST, 1.2" min. Bend Radius	N/A	ICFOJ9C7zz*	ICFOJ9C3zz*	ICFOJ9C5zz*
ST to ST, 1.2" min. Bend Radius	N/A	ICFOJ7C7zz*	ICFOJ7C3zz*	ICFOJ7C5zz*

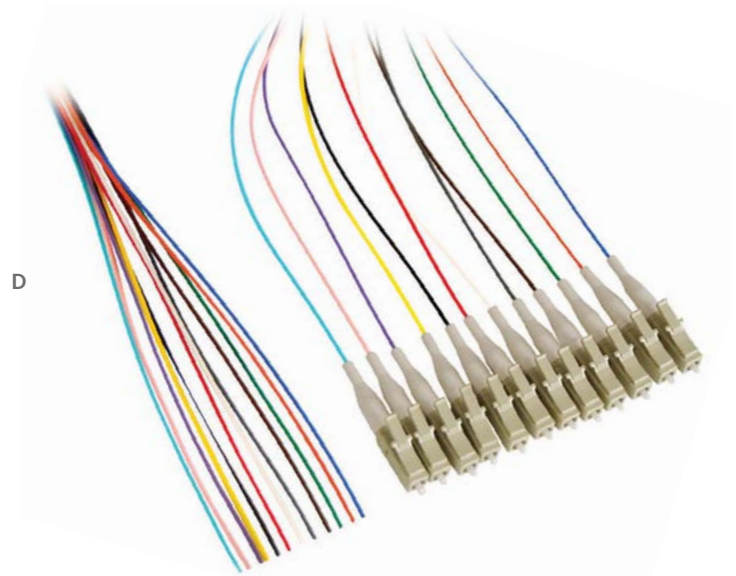
\*Lengths (zz) = 01, 02, 03, 05, 07, and 10 meters

## LC Pigtail Packs for Splicing

- Individually color-coded pigtail fibers

Fiber Type	12 Fibers
OM3, LC, 900µ <b>[D]</b>	ICFOJSTGzz*
OS2, LC, 900µ	ICFOJSTSzz*

\*Lengths (zz) = 01, 02, and 3 meters





# Cable Raceway

Sections  
Fittings

68  
69-70



## Bulk Raceway, Priced Per Foot

- Permanent adhesive mounting
- One-piece design

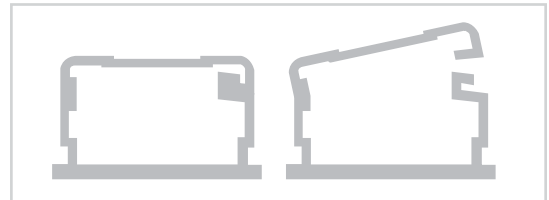
Description	120 ft (6 ft x 20)
3/4" W, 6' L [A]	ICRWR11Sxx* 
1-1/4" W, 6' L [B]	ICRWR12Sxx* 
1-3/4" W, 6' L [C]	ICRWR13Sxx* 

A

B

C

Description	160 ft (8 ft x 20)
3/4" W, 8' L	ICRWR118xx* 
1-1/4" W, 8' L	ICRWR128xx* 
1-3/4" W, 8' L	ICRWR138xx* 



Front view of stick; product can be opened

## Retail Raceway, Priced Per Stick

- Permanent adhesive mounting
- Individually packaged in a retail bag
- One-piece design

Description	20-Pack
3/4" W, 6' L [D]	ICRW22R6xx* 
1-1/4" W, 6' L [E]	ICRW33R6xx* 
1-3/4" W, 6' L [F]	ICRW44R6xx* 

D

E

Description	20-Pack
3/4" W, 8' L	ICRW22R8xx* 
1-1/4" W, 8' L	ICRW33R8xx* 
1-3/4" W, 8' L	ICRW44R8xx* 

F






20 Pack

\*Colors (xx):









# Outside Corner Covers



Description	10-Pack
3/4" [A]	ICRW110Cxx* 
1-1/4"	ICRW120Cxx* 
1-3/4"	ICRW130Cxx* 









# Inside Corner Covers

Description	Single	10-Pack
3/4" [B]	ICRW22NCxx* 	ICRW111Cxx* 
1-1/4"	ICRW33NCxx* 	ICRW121Cxx* 
1-3/4"	ICRW44NCWH 	ICRW131Cxx* 



# Tees

Description	Single	10-Pack
3/4" [C]	ICRW22TExx* 	ICRW111TOxx* 
1-1/4"	ICRW33TExx* 	ICRW121TOxx* 
1-3/4"	ICRW44TExx* 	ICRW131TOxx* 



\*Colors (xx):  
 WH (White)  
 IV (Ivory)

## Ceiling Entries

Description	Single	10-Pack
3/4" [A]	ICRW22CMxx* 	ICRW11CExx* 
1-1/4"	ICRW33CMxx* 	ICRW12CExx* 
1-3/4"	ICRW44CMxx* 	ICRW13CExx* 



## Joint Covers

Description	Single	10-Pack
3/4" [B]	ICRW22JCxx* 	ICRW11JCxx* 
1-1/4"	ICRW33JCxx* 	ICRW12JCxx* 
1-3/4"	ICRW44JCxx* 	ICRW13JCxx* 



## 90° Flat Elbows

Description	Single	10-Pack
3/4" [C]	ICRW22FExx* 	ICRW11EOxx* 
1-1/4"	ICRW33FExx* 	ICRW12EOxx* 
1-3/4"	ICRW44FExx* 	ICRW13EOxx* 



## End Caps

Description	Single	10-Pack
3/4" [D]	ICRW22ECxx* 	ICRW11ECxx* 
1-1/4"	ICRW33ECxx* 	ICRW12ECxx* 
1-3/4"	ICRW44ECWH 	ICRW13ECxx* 



\*Colors (xx): WH (White) IV (Ivory)



Punch Down Tools	72
Wire Cutters	73
Stripper Cable	73
Crimping Tools	74
Compression Tools	74

## JackEasy™ 4-Pair Termination Tool



- Cuts four pairs of wires with one squeeze
- Works with HD and EZ® connectors
- Includes HD and EZ blades

Description	Single	6-Pack
Tool <b>[A]</b>	ICACSPDTEH	N/A
HD and EZ Replacement Blades <b>[B]</b>	ICACS8WUEH	N/A
HD Replacement Blade	N/A	ICACSPDRHD
EZ Replacement Blade	N/A	ICACSPDREZ



## 110 and 66 Single Blade Punch-Down Tool

- Includes 110 and 66 blades

Description	Single
Tool <b>[C]</b>	ICACSPDT00
110 Replacement Blade <b>[D]</b>	ICACS110RB
66 Replacement Blade <b>[E]</b>	ICACS066RB



## 110 4-Pair Punch-Down Tool

- 110 lbs. (50 kgs) maximum impact force

Description	Single
Tool <b>[F]</b>	ICACSPDT4P
Replacement Blade <b>[G]</b>	ICACS04PH5



## Connector Removal Tool

- Helps remove keystone connectors and patch cords

Description	Single
Tool	ICACSP481



## Handheld Termination Aid

- Works with HD and EZ connectors

Description	Single
Aid	ICACSHTA01



## Stripper Tools

- Deluxe: strips UTP, STP, and coax cable
- Economy: strips UTP and STP cable
- 5~6.2mm cable diameter

Description	Single
Deluxe <b>[A]</b>	ICACSTSUCD
Economy <b>[B]</b>	ICACSTSUS1



## Wire Cutter and Stripper

- Strips 12~24 AWG stranded wire and 10~22 AWG solid wire

Description	Single
Tool	ICACSTRST







## Heavy Duty Modular Plug Crimping Tool

- Crimp 8-Position 8-Conductor modular plugs

Description	Single
Tool	ICACST845



## Universal Modular Plug Crimping Tool

- Crimp 4, 6, and 8-Position modular plugs

Description	Single
Tool	ICACST864



## Universal Compression Tool

- Compress F-Type, RCA, and BNC 90° compression connectors and modular compression connectors

Description	Single
Tool	ICACST01U



## Economy Compression Tool

- Compress F-Type, RCA, and BNC compression connectors

Description	Single
Tool	ICACST01E



## F-Type Connectors

- Works with the Universal and Compression tools

F-Type Connectors	100-Pack
RG-6, compression <b>[A]</b>	ICRDSAV01C
RG-6Q, compression	ICRDSAV04C
RG-59, compression	ICRDSAV59C

A



100 Pack

IC066BRCLP .....	28	IC107F3Cxx .....	10	IC107SF6SS .....	10	ICACSDCICL .....	22	ICCMSCMPB2 .....	34
IC066CV050 .....	28	IC107F3Txx .....	10	IC107ST2xx .....	6	ICACSDCVCL .....	22	ICCMSCMPB3 .....	34
IC066DFT50 .....	27	IC107F03xx .....	10	IC107UAAWH .....	8	ICACSHTA01 .....	73	ICCMSCMPB4 .....	34
IC066NB050 .....	27	IC107F4Cxx .....	10	IC107UABWH .....	8	ICACSMBDxx .....	18	ICCMSCMPC1 .....	34
IC066NBC50 .....	27	IC107F4Txx .....	10	IC108SB1xx .....	14	ICACSMBSxx .....	18	ICCMSCMPC2 .....	34
IC066SFT25 .....	27	IC107F04xx .....	10	IC108SB2xx .....	14	ICACSPDREZ .....	72	ICCMSCMPK1 .....	35
IC106FP2xx .....	13	IC107F5Cxx .....	2	IC108SB4xx .....	14	ICACSPDRHD .....	72	ICCMSCMPK2 .....	35
IC107AHMWH .....	8	IC107F5Txx .....	2	IC108SB6xx .....	14	ICACSPDT00 .....	72	ICCMSCMPLC .....	37
IC107AS4WH .....	13	IC107F6Cxx .....	2	IC110CB4PC .....	25	ICACSPDT4P .....	72	ICCMSCMPR5 .....	37
IC107AUSWH .....	8	IC107F6Rxx .....	2	IC110CB5PC .....	25	ICACSPDTEH .....	72	ICCMSCMPR6 .....	37
IC107B5Fxx .....	7	IC107F6Txx .....	2	IC110CMBNF .....	24	ICACSP481 .....	73	ICCMSCMPR7 .....	37
IC107B5Gxx .....	7	IC107F6Vxx .....	2	IC110CMBWF .....	24	ICACSQ75BK .....	58	ICCMSCMPT1 .....	37
IC107B9Fxx .....	7	IC107F06xx .....	10	IC110H1004 .....	24	ICACSQB8BK .....	58	ICCMSCMPT2 .....	37
IC107B9Gxx .....	7	IC107F12xx .....	10	IC110LHLDR .....	25	ICACSQVKBK .....	58	ICCMSCMPV5 .....	37
IC107BC1xx .....	14	IC107FD8xx .....	10	IC110NF100 .....	24	ICACSS01BK .....	31	ICCMSCMPV6 .....	37
IC107BC2xx .....	14	IC107FFWSS .....	11	IC110PRK61 .....	25	ICACSTSUCD .....	73	ICCMSCMPV7 .....	37
IC107BE241 .....	21	IC107FFWxx .....	11	IC110RM100 .....	25	ICACSTSUS1 .....	73	ICCMSDRM02 .....	37
IC107BFCWH .....	7	IC107FM3xx .....	12	IC110RM200 .....	25	ICACSV75xx .....	58	ICCMSDRM03 .....	37
IC107BFDWH .....	7	IC107FN4xx .....	12	IC110RMCMB .....	25	ICACSVB8BK .....	58	ICCMSDRM05 .....	37
IC107BGCWH .....	7	IC107FQGWH .....	7	IC110TC450 .....	25	ICACSVBTBK .....	58	ICCMSDRMC2 .....	37
IC107BGDWH .....	7	IC107FT0WH .....	10	IC110W1004 .....	24	ICACSWDS10 .....	25	ICCMSDRMC3 .....	37
IC107BN0xx .....	6	IC107FT4xx .....	12	IC110W3004 .....	24	ICACSWDS20 .....	25	ICCMSDRMC5 .....	37
IC107BN2WH .....	6	IC107GACxx .....	3	IC110WF100 .....	24	ICCABP5Exx .....	51	ICCMSDRPO2 .....	37
IC107BNVxx .....	6	IC107GATxx .....	3	IC110WF300 .....	24	ICCABP6Axx .....	51	ICCMSDRPO3 .....	37
IC107BP8VB .....	22	IC107HDCWH .....	8	IC110WH100 .....	24	ICCABP6Exx .....	51	ICCMSDRPO5 .....	37
IC107BP12V .....	22	IC107HDMxx .....	8	IC110WK966 .....	24	ICCABP6FBL .....	51	ICCMSSFCMC3 .....	34
IC107BP241 .....	21	IC107HDTWH .....	8	IC625S51xx .....	15	ICCABP6Vxx .....	51	ICCMSHB1RC .....	30
IC107BP481 .....	21	IC107L6Cxx .....	4	IC625S52xx .....	15	ICCABR5Exx .....	50	ICCMSHB1RS .....	30
IC107BP482 .....	21	IC107L6Rxx .....	4	IC625SB6xx .....	15	ICCABR6Axx .....	50	ICCMSHB2RC .....	30
IC107C5CBK .....	6	IC107L6Txx .....	4	IC625SV11V .....	15	ICCABR6Exx .....	50	ICCMSHB2RS .....	30
IC107C5Exx .....	6	IC107L6Vxx .....	4	IC625SV2IV .....	15	ICCABR6FBL .....	50	ICCMSHB4RC .....	30
IC107C5TBK .....	6	IC107LC2xx .....	6	IC630DA6SS .....	16	ICCABR6Vxx .....	50	ICCMSHB4RS .....	30
IC107C6AS1 .....	6	IC107LCGxx .....	6	IC630DB6xx .....	16	ICCABT5Exx .....	51	ICCMSHDS20 .....	38
IC107C6Axx .....	6	IC107LF1xx .....	13	IC630DIBxx .....	11	ICCABT6Axx .....	51	ICCMSJH922 .....	36
IC107C6CBK .....	6	IC107LF2xx .....	13	IC630E6GWH .....	17	ICCABT6Exx .....	51	ICCMSJH933 .....	36
IC107C6Rxx .....	6	IC107LF3xx .....	13	IC630E0xx .....	10	ICCABT6FBL .....	51	ICCMSJH944 .....	36
IC107C6Sxx .....	6	IC107LF6xx .....	13	IC630EB0xx .....	10	ICCABT6Vxx .....	51	ICCMSJH955 .....	36
IC107C6TBK .....	6	IC107MB6BK .....	18	IC630EBDxx .....	10	ICCMSABR62 .....	30	ICCMSJHB22 .....	36
IC107CACBK .....	6	IC107MRDxx .....	18	IC630EBSSS .....	10	ICCMSABR64 .....	30	ICCMSJHB33 .....	36
IC107CATBK .....	6	IC107MRSxx .....	18	IC630EG0xx .....	17	ICCMSABR66 .....	30	ICCMSJHB44 .....	36
IC107CATS1 .....	6	IC107PMGxx .....	7	IC640BDSxx .....	13	ICCMSABR68 .....	30	ICCMSJHB55 .....	36
IC107CP6xx .....	6	IC107PPC04 .....	65	IC640BSSxx .....	13	ICCMSABRS2 .....	30	ICCMSJHK22 .....	36
IC107DA1xx .....	13	IC107PPS6A .....	21	IC1074Plxx .....	13	ICCMSABRS4 .....	30	ICCMSJHK33 .....	36
IC107DA2xx .....	13	IC107PPU6A .....	21	IC1075FTWH .....	7	ICCMSABRS6 .....	30	ICCMSJHK44 .....	36
IC107DA4xx .....	13	IC107S01SS .....	12	IC1076F0xx .....	2	ICCMSABRS8 .....	30	ICCMSJHK55 .....	36
IC107DDHxx .....	8	IC107S1TWH .....	12	IC1076FCxx .....	2	ICCMSABRSC .....	30	ICCMSJHW22 .....	36
IC107DF4SS .....	10	IC107S01xx .....	12	IC1076FTxx .....	2	ICCMSC30BK .....	33	ICCMSJHW33 .....	36
IC107DF8SS .....	10	IC107S02SS .....	12	IC1076V0xx .....	4	ICCMSC40BK .....	33	ICCMSJHW44 .....	36
IC107DFDSS .....	11	IC107S2TWH .....	12	IC1076VCxx .....	4	ICCMSC42BK .....	33	ICCMSJHW55 .....	36
IC107DFDxx .....	11	IC107S02xx .....	12	IC1076VTxx .....	4	ICCMSCMA15 .....	34	ICCMSL4PBK .....	42
IC107DFSSS .....	11	IC107S03SS .....	12	IC1078E5xx .....	4	ICCMSCMA25 .....	34	ICCMSLAWS2 .....	41
IC107DFSxx .....	11	IC107S03xx .....	12	IC1078F5xx .....	2	ICCMSCMA41 .....	34	ICCMSLCMRK .....	42
IC107DFTWH .....	11	IC107S04SS .....	12	IC1078F6xx .....	2	ICCMSCMA42 .....	34	ICCMSLLESSK .....	42
IC107DH2xx .....	8	IC107S04xx .....	12	IC1078GAXx .....	3	ICCMSCMA51 .....	35	ICCMSLFT90 .....	40
IC107DH1xx .....	11	IC107S06SS .....	12	IC1078L6xx .....	4	ICCMSCMA52 .....	35	ICCMSLIR90 .....	40
IC107DI2xx .....	11	IC107S06xx .....	12	IC1078S6A0 .....	3	ICCMSCMA73 .....	32	ICCMSLJB01 .....	42
IC107DI3xx .....	11	IC107SACA0 .....	3	IC1079FTWH .....	7	ICCMSCMA81 .....	32	ICCMSLMFF2 .....	41
IC107DI6xx .....	11	IC107SAPxx .....	7	IC06626P4C .....	27	ICCMSCMA82 .....	32	ICCMSLOR90 .....	40
IC107DPIxx .....	13	IC107SATA0 .....	3	IC06628P8C .....	27	ICCMSCMA83 .....	32	ICCMSLPECK .....	42
IC107DSBxx .....	7	IC107SB1xx .....	14	IC06686P6C .....	27	ICCMSCMA84 .....	32	ICCMSLRBSK .....	41
IC107DSCxx .....	7	IC107SB2xx .....	14	ICACS04PH5 .....	72	ICCMSCMAC1 .....	34	ICCMSLRCRP .....	41
IC107E5Cxx .....	4	IC107SB4WH .....	14	ICACS8WUEH .....	72	ICCMSCMAC2 .....	34	ICCMSLRRBK .....	42
IC107E5Txx .....	4	IC107SB6WH .....	14	ICACS066RB .....	72	ICCMSCMAV1 .....	35	ICCMSLRRDB .....	41
IC107F1Cxx .....	10	IC107SBTxx .....	14	ICACS110RB .....	72	ICCMSCMAV2 .....	35	ICCMSLRW05 .....	40
IC107F1Txx .....	10	IC107SC2xx .....	6	ICACSCT01E .....	74	ICCMSCMP31 .....	35	ICCMSLST05 .....	40
IC107F01xx .....	10	IC107SF1SS .....	10	ICACSCT01U .....	74	ICCMSCMP32 .....	35	ICCMSLSTV5 .....	40
IC107F2Cxx .....	10	IC107SF2SS .....	10	ICACSCT845 .....	74	ICCMSCMP61 .....	35	ICCMSLSTV7 .....	40
IC107F2Txx .....	10	IC107SF3SS .....	10	ICACSCT864 .....	74	ICCMSCMP62 .....	35	ICCMSLSTW5 .....	40
IC107F02xx .....	10	IC107SF4SS .....	10	ICACSCTRST .....	73	ICCMSCMPB1 .....	34	ICCMSLTJS6 .....	42

ICCMSLTJSK.....42	ICFOJ2M7zz.....66	ICMPP12V60.....22	ICPCSP05xx.....55	ICRESDP14E.....44	ICRW44R8xx.....68
ICCMSLTWS6.....41	ICFOJ3M3zz.....66	ICMPP24CP5.....23	ICPCSP07xx.....55	ICRESDP14K.....44	ICRW44TExx.....69
ICCMSLVWBK.....42	ICFOJ3M5zz.....66	ICMPP24CP6.....23	ICPCSP10xx.....55	ICRESDP14W.....44	ICRW11Sxx.....68
ICCMSR4P84.....32	ICFOJ3M7zz.....66	ICMPP24CPA.....23	ICPCSP14xx.....55	ICRESDP28K.....44	ICRW12Sxx.....68
ICCMSR1972.....32	ICFOJ7C3zz.....66	ICMPP024T2.....26	ICPCSP25xx.....55	ICRESDPA2U.....47	ICRW13Sxx.....68
ICCMSR1984.....32	ICFOJ7C5zz.....66	ICMPP24T2C.....26	ICPCST01xx.....54	ICRESDPA2W.....47	ICRW118xx.....68
ICCMSRMC5.....34	ICFOJ7C7zz.....66	ICMPP024T4.....26	ICPCST03xx.....54	ICRESDPA1C.....46	ICRW128xx.....68
ICCMSRDS20.....38	ICFOJ8C3zz.....66	ICMPP24T4C.....26	ICPCST05xx.....54	ICRESDPA3C.....46	ICRW138xx.....68
ICCMSRSDSC3.....38	ICFOJ8C5zz.....66	ICMPP24TF2.....26	ICPCST07xx.....54	ICRESDPA3D.....46	
ICCMSRSDV20.....39	ICFOJ8C7zz.....66	ICMPP24TF4.....26	ICPCST10xx.....54	ICRESDPB1C.....46	
ICCMSRSDV30.....39	ICFOJ8G7zz.....66	ICMPP024U6.....20	ICPCST14xx.....54	ICRESDPB2U.....47	
ICCMSRDVC4.....39	ICFOJ9C3zz.....66	ICMPP25CMB.....20	ICPCST25xx.....54	ICRESDPB2W.....47	
ICCMSRFLKT.....32	ICFOJ9C5zz.....66	ICMPP48C51.....23	ICPCSTFBzz.....57	ICRESDPB3C.....46	
ICCMSRKSMT.....38	ICFOJ9C7zz.....66	ICMPP48C61.....23	ICPCSTFFzz.....57	ICRESDPB3D.....46	
ICCMSRMU1C.....37	ICFOJARGzz.....65	ICMPP48CP5.....23	ICPCSTFMzz.....57	ICRESDR9PH.....44	
ICCMSRSF10.....38	ICFOJARQzz.....65	ICMPP48CP6.....23	ICPCSTMBzz.....57	ICRESDR14H.....48	
ICCMSRSF15.....38	ICFOJARSzz.....65	ICMPP48CPA.....23	ICPCSTMMzz.....57	ICRESDR14T.....48	
ICCMSRSFC1.....38	ICFOJATGzz.....65	ICMPP048T2.....26	ICPCSV01xx.....55	ICRESDR21H.....48	
ICCMSRSFC2.....38	ICFOJATQzz.....65	ICMPP48T2C.....26	ICPCSV03xx.....55	ICRESDR28H.....48	
ICCMSRSV10.....39	ICFOJATSzz.....65	ICMPP48TF2.....26	ICPCSV05xx.....55	ICRESVPA1C.....46	
ICCMSRSV15.....39	ICFOJSTGzz.....66	ICMPP048U6.....20	ICPCSV07xx.....55	ICRESVPA2U.....47	
ICCMSRSVC1.....39	ICFOJSTSzz.....66	ICMPP125EV.....22	ICPCSV10xx.....55	ICRESVPA2W.....47	
ICCMSRSVC2.....39	ICFOPB00BK.....62	ICMPP0245E.....20	ICPCSW01xx.....54	ICRESVPA3C.....46	
ICCMSSSF12.....31	ICFOPB00HK.....63	ICMPP245EV.....20	ICPCSW03xx.....54	ICRESVPA3D.....46	
ICCMSSSF25.....31	ICFOPC16BK.....62	ICMPP246AS.....21	ICPCSW05xx.....54	ICRESVPB1C.....46	
ICCMSWMR08.....31	ICFOPC16H5.....63	ICMPP246AU.....21	ICPCSW07xx.....54	ICRESVPB3C.....46	
ICCMSWMR15.....31	ICFOPC16H9.....63	ICMPP0246B.....20	ICPCSW10xx.....54	ICRW11CExx.....70	
ICCMSWMR30.....31	ICFOPC16HG.....63	ICMPP0485E.....20	ICPCSX01xx.....54	ICRW11ECxx.....70	
ICCMSWMSV2.....39	ICFOPC26BK.....62	ICMPP485EV.....20	ICPCSX03xx.....54	ICRW11EOxx.....70	
ICCMSWMUR5.....31	ICFOPC161G.....62	ICMPP0486B.....20	ICPCSX05xx.....54	ICRW11ICxx.....69	
ICFC12MCH5.....64	ICFOPL16B5.....62	ICMPP1260V.....22	ICPCSX07xx.....54	ICRW11JCxx.....70	
ICFC12MCH6.....64	ICFOPL16BG.....62	ICMPP02460.....20	ICPCSX10xx.....54	ICRW11OCxx.....69	
ICFC12MCHG.....64	ICFOPL16BK.....62	ICMPP2460V.....20	ICPCSY01xx.....55	ICRW11TOxx.....69	
ICFC12ML1G.....64	ICFOPL16H5.....63	ICMPP04860.....20	ICPCSY03xx.....55	ICRW12CExx.....70	
ICFC12ML50.....64	ICFOPL16H9.....63	ICMPP4860V.....20	ICPCSY05xx.....55	ICRW12ECxx.....70	
ICFC12MLD6.....64	ICFOPL16HG.....63	ICMPPMB506.....18	ICPCSY07xx.....55	ICRW12EOxx.....70	
ICFC12MS1G.....64	ICFOPL161G.....62	ICMPPMB606.....18	ICPCSY10xx.....55	ICRW12ICxx.....69	
ICFC12MS50.....64	ICFOPL1615.....62	ICMPPTF242.....26	ICRDS0F5WH.....17	ICRW12JCxx.....70	
ICFC12MSD6.....64	ICFOPL1619.....62	ICMPPTF244.....26	ICRDSAV01C.....74	ICRW12OCxx.....69	
ICFC12MSP5.....65	ICFOPS16BK.....62	ICPCSF01BL.....54	ICRDSAV04C.....74	ICRW12TOxx.....69	
ICFC12MSP6.....65	ICFOPS26BK.....62	ICPCSF03BL.....54	ICRDSAV59C.....74	ICRW13CExx.....70	
ICFC12MSPG.....65	ICFOPT16BK.....62	ICPCSF05BL.....54	ICRSDSDC2LK.....48	ICRW13ECxx.....70	
ICFC12SCH9.....64	ICFOPT26BK.....62	ICPCSF07BL.....54	ICRSDSDCAC2.....48	ICRW13EOxx.....70	
ICFC12SLD9.....64	ICFORE31RM.....60	ICPCSF10BL.....54	ICRDSMMAW8.....45	ICRW13ICxx.....69	
ICFC12SSD9.....64	ICFORE41RM.....61	ICPCSG03xx.....54	ICRDSMMBK1.....45	ICRW13JCxx.....70	
ICFC12SSP9.....65	ICFORE62RM.....60	ICPCSG05xx.....54	ICRDSMMBW1.....45	ICRW13OCxx.....69	
ICFC24ML1G.....64	ICFORE82RM.....61	ICPCSG07xx.....54	ICRDSMMBW8.....45	ICRW13TOxx.....69	
ICFC24ML50.....64	ICFORECAC2.....63	ICPCSG10xx.....54	ICRDSV05WH.....17	ICRW22CMxx.....70	
ICFC24MLD6.....64	ICFORECAC3.....63	ICPCSG15xx.....54	ICRDSVF5WH.....17	ICRW22ECxx.....70	
ICFC24MLH5.....64	ICFORET4RM.....60	ICPCSG25xx.....54	ICRES8V42S.....47	ICRW22FExx.....70	
ICFC24MLH6.....64	ICFORPP1RH.....63	ICPCSH01xx.....55	ICRES8V62S.....47	ICRW22JCxx.....70	
ICFC24MLHG.....64	ICFORPP1RM.....62	ICPCSH03xx.....55	ICRES8V82S.....47	ICRW22NCxx.....69	
ICFC24MLP5.....65	ICFOSKFM12.....62	ICPCSH05xx.....55	ICRESAV42L.....47	ICRW22R6xx.....68	
ICFC24MLP6.....65	ICFP96ML1G.....63	ICPCSH07xx.....55	ICRESAV62L.....47	ICRW22R8xx.....68	
ICFC24MLPG.....65	ICMAGBLOCK.....18	ICPCSH10xx.....55	ICRESAV62V.....47	ICRW22TExx.....69	
ICFC24SLD9.....64	ICMB89B0WH.....28	ICPCSH15xx.....55	ICRESAV82L.....47	ICRW33CMxx.....70	
ICFC24SLH9.....64	ICMB89BCWH.....28	ICPCSH20xx.....55	ICRESBMP04.....47	ICRW33ECxx.....70	
ICFC24SLP9.....65	ICMB89D0WH.....28	ICPCSM01BL.....55	ICRESBMP06.....47	ICRW33FExx.....70	
ICFODE21WH.....61	ICMB89U0WH.....28	ICPCSM03BL.....55	ICRESCM06.....48	ICRW33JCxx.....70	
ICFODE21WM.....60	ICMP8P8C5E.....58	ICPCSM05BL.....55	ICRESDC9PK.....44	ICRW33NCxx.....69	
ICFODE41WH.....61	ICMP8P8C6E.....58	ICPCSM07BL.....55	ICRESDC9PW.....44	ICRW33R6xx.....68	
ICFODE41WM.....60	ICMP8P8C6S.....58	ICPCSM10BL.....55	ICRESDC14K.....45	ICRW33R8xx.....68	
ICFOJ1G7zz.....66	ICMP8P8CFT.....58	ICPCSN01BL.....55	ICRESDC14W.....45	ICRW33TExx.....69	
ICFOJ1M3zz.....66	ICMP8P8CRD.....58	ICPCSN03BL.....55	ICRESDC21E.....45	ICRW44CMxx.....70	
ICFOJ1M5zz.....66	ICMP8P8SRD.....58	ICPCSN05BL.....55	ICRESDC21K.....45	ICRW44ECWH.....70	
ICFOJ1M7zz.....66	ICMPP12F5E.....22	ICPCSN07BL.....55	ICRESDC28E.....45	ICRW44FExx.....70	
ICFOJ2G7zz.....66	ICMPP12F6E.....22	ICPCSN10BL.....55	ICRESDC28K.....45	ICRW44JCxx.....70	
ICFOJ2M3zz.....66	ICMPP012U6.....22	ICPCSP01xx.....55	ICRESDCAC3.....48	ICRW44NCWH.....69	
ICFOJ2M5zz.....66	ICMPP12V5E.....22	ICPCSP03xx.....55	ICRESDCBUM.....48	ICRW44R6xx.....68	

# Elite Installer Program

The Elite Installer Program is a reseller program that aims to build a strong partnership and loyalty between Installers and ICC. By joining as an Elite Installer, your company can enjoy exclusive benefits directly from ICC for using ICC products. Additionally, as a Certified Elite Installer with a Master Technician, your company can offer a Lifetime Performance Warranty with your cabling installations.

## Elite Installer™

- Free membership
- 15-Year Performance Limited Warranty
- Project discounts
- Sales promotions
- Free product samples and demos
- New product releases
- Reward points

## Certified Elite Installer™

- Paid membership
- All benefits from Elite, plus:
- Lifetime Performance Limited Warranty
- One free Master Technician Training Course included
- Free unlimited site verifications
- Free tools

## Master Technician Training

- One-day course
- Earn a Master Technician License
- BICSI® certified
- Earn BICSI Continuing Education Credits
- Hands-on training

Visit [icc.com/elite](http://icc.com/elite) to learn more and sign up.







# Extended Warranties

ICC manufactures its products with the highest level of quality and adheres to strict industry standards. That's why we can offer our Installers comprehensive performance warranties for full system coverage.

## Lifetime Performance Warranty™

The warranty is exclusively available through ICC Certified Elite Installers and covers the guaranteed performance of the entire system for the usable life of the cable system. The coverage includes the replacement of ICC products and the labor needed to replace them. To be eligible, the cabling system must be installed by a Certified Elite Installer using ICC category-rated connectivity products and ICC horizontal premise cable as an end-to-end Permanent Link solution. Additionally, the cabling system must be verified as a Verified Site Cabling System.



## 15-Year Performance Warranty™

The warranty is exclusively available through ICC Elite Installers and covers the guaranteed performance of the entire system from end-to-end for 15 years from the date of installation. The coverage includes the replacement of ICC products only. To offer this warranty to your customers, you can sign up as an Elite Installer; no certification or training is required.



Visit [icc.com/warranty](http://icc.com/warranty) for more information.

# Elite Installer™ Success Stories

Our Elite Installers have completed projects in a wide range of industries, including:

School districts

University campuses

Residential tract homes

Apartment complexes

Medical facilities

Hotels and resorts

Government buildings

Retail stores

Commercial buildings

Community centers

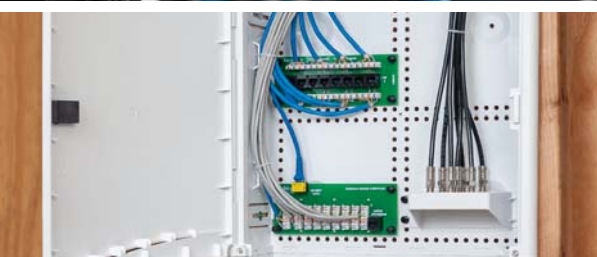
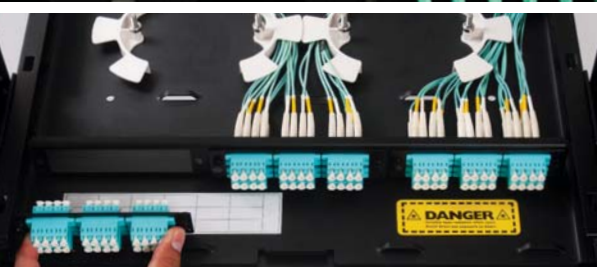
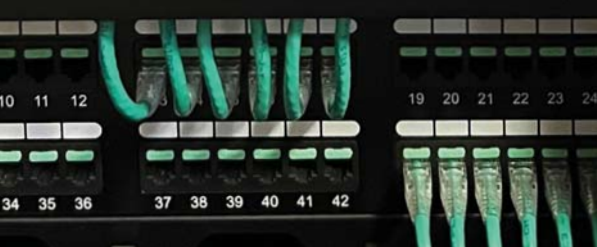
Visit [icc.com/success](http://icc.com/success) to read more success stories from ICC Elite Installers.

## \*\*Disclaimer\*\*

The information contained in this catalog is believed to be accurate and reliable but is subject to change without notice. The publisher of this catalog does not assume any responsibility for any errors or omissions in the information contained herein. All prices are subject to change without notice. The publisher of this catalog makes no representations or warranties, express or implied, as to the accuracy or completeness of the information contained herein, and specifically disclaims all warranties of merchantability and fitness for a particular purpose. The publisher of this catalog shall not be liable for any damages whatsoever arising out of the use of or reliance upon the information contained herein.







Copper | Fiber

Commercial | Residential

Structured Cabling Solutions



📍 California, USA

🌐 [ICC.COM](http://ICC.COM)

MMILIT0448-23